

H3K27me1 Polyclonal Antibody

Product Details	
Size	100 µg
Species Reactivity	Human
Host/Isotype	Rabbit / IgG
Class	Polyclonal
Type	Antibody
Conjugate	Unconjugated
Immunogen	Methylated peptide (Lys27) corresponding to Human H3 (aa 24-31)
Form	Liquid
Concentration	0.5 mg/mL
Purification	Affinity chromatography
Storage buffer	PBS, pH 7.2, with 30% glycerol, 0.1% BSA
Contains	0.09% sodium azide
Storage conditions	Store at 4°C short term. For long term storage, store at -20°C, avoiding freeze/thaw cycles.
RRID	AB_2532806

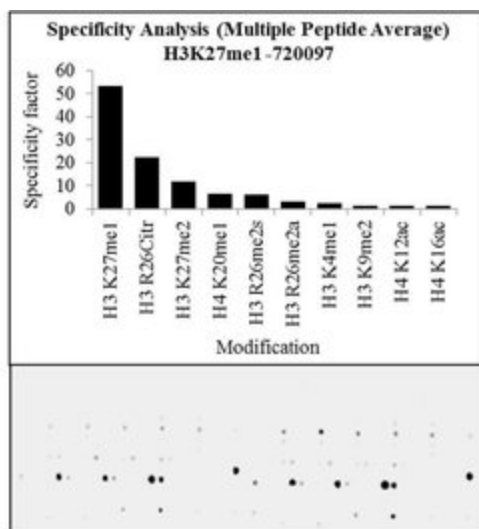
Applications	Tested Dilution	Publications
Immunocytochemistry (ICC/IF)	0.5 µg/mL	-
Peptide Array (Array)	0.25 µg/mL	-

Product Specific Information

These Polyclonal antibodies are of rabbit origin developed by immunizing animals with proteins or peptides. The polyclonal antibody is purified by affinity purification from the rabbit sera generated after immunizing the rabbits with a specific type of protein or peptide. The purified antibody is tested for its functionality in various relevant research applications. The antibody is developed for Research Use Only and is non-hazardous or non-infectious in nature.

Since it is conserved across species, the antibody may react with many other species.

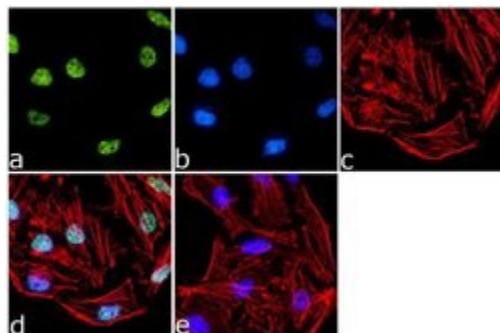
Advanced Verification Data



H3K27me1 Antibody (720097)

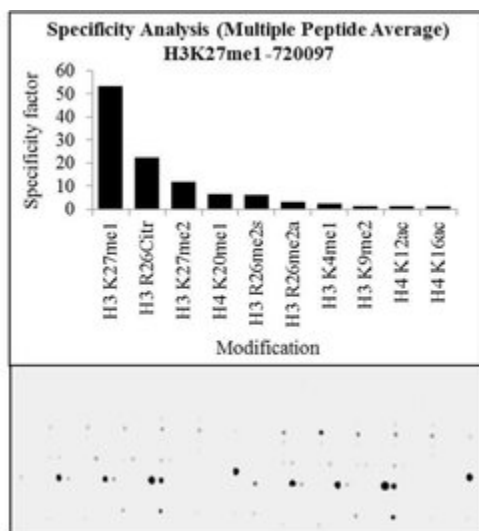
Antibody specificity for modified targets can be established using peptide arrays by quantifying detection of the target protein along with closely related proteins. Peptide array of Histone H3K27me1 using Anti-Methyl-Histone H3 (Lys27) Polyclonal Antibody: An array of the specific peptide and other relevant peptides when tested using Anti-Methyl-Histone H3 (Lys27) Polyclonal Antibody (Product # 720097), showed that the Histone H3K27me1 modification was specifically recognized by the antibody. Peptide array validation info.

Product Images For H3K27me1 Polyclonal Antibody



H3K27me1 Antibody (720097) in ICC/IF

Immunofluorescence was performed on fixed and permeabilized HepG2 cells for detection of Histone H3K27me1 using Anti-Histone H3K27me1 Rabbit Polyclonal Antibody (Product # 720097, 0.5 µg/mL) and labeled with Goat anti-Rabbit IgG (H+L) Superclonal™ Secondary Antibody, Alexa Fluor® 488 conjugate (Product # A27034, 1:2000). Panel a) shows representative cells that were stained for detection and localization of Histone H3K27me1 protein (green), Panel b) is stained for nuclei (blue) using SlowFade® Gold Antifade Mountant with DAPI (Product # S36938,). Panel c) represents cytoskeletal F-actin staining using Alexa Fluor® 555 Rhodamine Phalloidin (Product # R415, 1:300). Panel d) is a composite image of Panels a, b and c clearly demonstrating nuclear localization of Histone H3K27me1. Panel e) represents control cells with no primary Antibody to assess background.



H3K27me1 Antibody (720097) in ARRAY

The specificity of the antibody, Anti-Methyl-Histone H3 (Lys27) Polyclonal Antibody (Product # 720097, 0.25 µg/mL) to Histone H3K27me1 peptide was confirmed using MODified™ Histone Peptide Array (Active Motif, 13001). Goat anti-Rabbit IgG (H+L) Superclonal™ Secondary Antibody, HRP conjugate (Product # A27036, 1:4000 dilution) was used as the secondary antibody. Chemiluminescent detection was performed using Pierce™ ECL Western Blotting Substrate (Product # 32106). The dot blot data obtained (lower panel) was analyzed using Array Analyze software as per the manufacturer's instructions (top panel).

For Research Use Only. Not for use in diagnostic procedures. Not for resale without express authorization. Products are warranted to operate or perform substantially in conformance with published Product specifications in effect at the time of sale, as set forth in the Production documentation, specifications and/or accompanying package inserts ("Documentation"). No claim of suitability for use in applications regulated by FDA is made. The warranty provided herein is valid only when used by properly trained individuals. Unless otherwise stated in the Documentation, this warranty is limited to one year from date of shipment when the Product is subjected to normal, proper and intended usage. This warranty does not extend to anyone other than the Buyer. Any model or sample furnished to Buyer is merely illustrative of the general type and quality of goods and does not represent that any Product will conform to such model or sample. NO OTHER WARRANTIES, EXPRESS OR IMPLIED, ARE GRANTED INCLUDING WITHOUT LIMITATION, IMPLIED WARRANTIES OF MERCHANTABILITY, FITNESS FOR ANY PARTICULAR PURPOSE, OR NON INFRINGEMENT. BUYER'S EXCLUSIVE REMEDY FOR NON-CONFORMING PRODUCTS DURING THE WARRANTY PERIOD IS LIMITED TO REPAIR, REPLACEMENT OF OR REFUND FOR THE NON-CONFORMING PRODUCT(S) AT SELLER'S SOLE OPTION. THERE IS NO OBLIGATION TO REPAIR, REPLACE OR REFUND FOR PRODUCTS AS THE RESULT OF (I) ACCIDENT, DISASTER OR EVENT OF FORCE MAJEURE, (II) MISUSE, FAULT OR NEGLIGENCE OF OR BY BUYER, (III) USE OF THE PRODUCTS IN A MANNER FOR WHICH THEY WERE NOT DESIGNED, OR (IV) IMPROPER STORAGE AND HANDLING OF THE PRODUCTS. Unless otherwise expressly stated on the Product or in the documentation accompanying the Product, the Product is intended for research only and is not to be used for any other purpose, including without limitation, unauthorized commercial uses, in vitro diagnostic uses, ex vivo or in vivo therapeutic uses, or any type of consumption by or application to human or animals.