

Phospho-Cyclin E (Ser88) Polyclonal Antibody

Product Details

Size	100 µg
Species Reactivity	Human
Host/Isotype	Rabbit / IgG
Class	Polyclonal
Type	Antibody
Conjugate	Unconjugated
Immunogen	Peptide corresponding to Human CCNE1 (aa 85-92)
Form	Liquid
Concentration	0.5 mg/mL
Purification	Affinity chromatography
Storage buffer	PBS, pH 7.2, with 0.1% BSA, 30% glycerol
Contains	0.09% sodium azide
Storage conditions	Store at 4°C short term. For long term storage, store at -20°C, avoiding freeze/thaw cycles.
RRID	AB_2609128

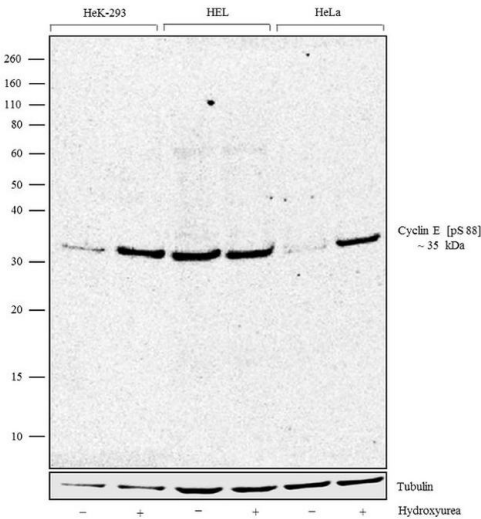
Applications	Tested Dilution	Publications
Western Blot (WB)	1-2 µg/mL	-
Immunocytochemistry (ICC/IF)	2 µg/mL	-

Product Specific Information

These Polyclonal antibodies are of rabbit origin developed by immunizing animals with proteins or peptides. The polyclonal antibody is purified by affinity purification from the rabbit sera generated after immunizing the rabbits with a specific type of protein or peptide. The purified antibody is tested for its functionality in various relevant research applications. The antibody is developed for Research Use Only and is non-hazardous or non-infectious in nature.

This antibody is predicted to react with Monkey, Mouse, Sheep and Rat.

Product Images For Phospho-Cyclin E (Ser88) Polyclonal Antibody

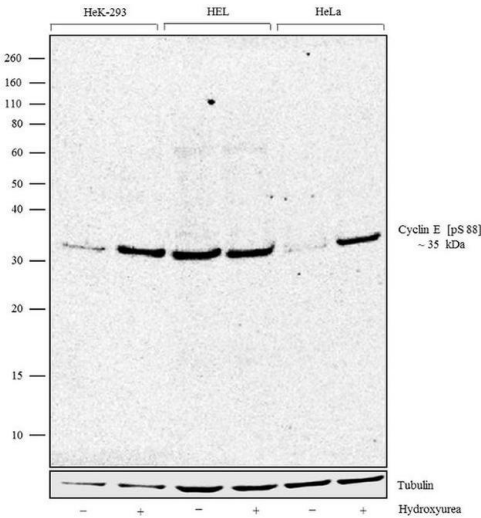


Phospho-Cyclin E (Ser88) Antibody (720115)

Altered expression of proteins upon cell treatment demonstrates antibody specificity. Western blot using Phospho-Cyclin E pSer88 Antibody, Rabbit Polyclonal (Product # 720115), shows increased expression of Phospho-Cyclin E pSer88 in HEK-293 and HeLa cell lines upon treatment with Hydroxyurea. {TM}

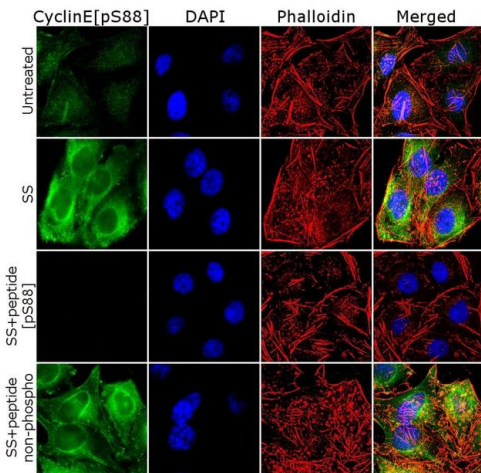
Phospho-Cyclin E (Ser88) Antibody (720115) in WB

Western blot analysis was performed on whole cell extracts (30 µg lysate) of HEK-293 (Lane 1), HEK-293 treated with hydroxyurea (2mM Hydroxy urea for 24hrs) (Lane 2), HEL (Lane 3), HEL treated with hydroxyurea (2mM Hydroxy urea for 24hrs) (Lane 4), HeLa (Lane 5), HeLa treated with hydroxyurea (2mM Hydroxy urea for 24hrs) (Lane 6). The blots were probed with Anti-Cyclin E (pS88) Rabbit Polyclonal Antibody (Product # 720115, 1-2 µg/mL) and detected by chemiluminescence using Goat anti-Rabbit IgG (Heavy Chain) Superclonal™ Secondary Antibody, HRP conjugate (Product # A27036, 0.4 µg/mL, 1:2500 dilution). A 35 kDa band corresponding to Cyclin E (pS88) which possibly represents the lower molecular weight isoform of Cyclin E upon phosphorylation at S88 is observed. Known quantity of protein samples were electrophoresed using Novex® NuPAGE® 12% Bis-Tris gel (Product # NP0342BOX), XCell SureLock™ Electrophoresis System (Product # EI0002) and Novex® Sharp Pre-Stained Protein Standard (Product # LC5800). Resolved proteins were then transferred onto a nitrocellulose membrane with iBlot® Dry Blotting System (Product # IB21001). The membrane was probed with the relevant primary and secondary Antibody following blocking with 5% skimmed milk. Chemiluminescent detection was performed using Pierce™ ECL Western Blotting Substrate (Product # 32106).



Phospho-Cyclin E (Ser88) Antibody (720115)

Altered expression of proteins upon cell treatment demonstrates antibody specificity. Immunofluorescence analysis using Phospho-Cyclin E pSer88 Antibody, Rabbit Polyclonal (Product # 720115), shows increase in Phospho-Cyclin E pSer88 expression in the cytoplasm of HeLa cells upon serum starvation. {TM}



View more figures on thermofisher.com

For Research Use Only. Not for use in diagnostic procedures. Not for resale without express authorization. Products are warranted to operate or perform substantially in conformance with published Product specifications in effect at the time of sale, as set forth in the Production documentation, specifications and/or accompanying package inserts ("Documentation"). No claim of suitability for use in applications regulated by FDA is made. The warranty provided herein is valid only when used by properly trained individuals. Unless otherwise stated in the Documentation, this warranty is limited to one year from date of shipment when the Product is subjected to normal, proper and intended usage. This warranty does not extend to anyone other than the Buyer. Any model or sample furnished to Buyer is merely illustrative of the general type and quality of goods and does not represent that any Product will conform to such model or sample. NO OTHER WARRANTIES, EXPRESS OR IMPLIED, ARE GRANTED INCLUDING WITHOUT LIMITATION, IMPLIED WARRANTIES OF MERCHANTABILITY, FITNESS FOR ANY PARTICULAR PURPOSE, OR NON INFRINGEMENT. BUYER'S EXCLUSIVE REMEDY FOR NON-CONFORMING PRODUCTS DURING THE WARRANTY PERIOD IS LIMITED TO REPAIR, REPLACEMENT OF OR REFUND FOR THE NON-CONFORMING PRODUCT(S) AT SELLER'S SOLE OPTION. THERE IS NO OBLIGATION TO REPAIR, REPLACE OR REFUND FOR PRODUCTS AS THE RESULT OF (I) ACCIDENT, DISASTER OR EVENT OF FORCE MAJEURE, (II) MISUSE, FAULT OR NEGLIGENCE OF OR BY BUYER, (III) USE OF THE PRODUCTS IN A MANNER FOR WHICH THEY WERE NOT DESIGNED, OR (IV) IMPROPER STORAGE AND HANDLING OF THE PRODUCTS. Unless otherwise expressly stated on the Product or in the documentation accompanying the Product, the Product is intended for research only and is not to be used for any other purpose, including without limitation, unauthorized commercial uses, in vitro diagnostic uses, ex vivo or in vivo therapeutic uses, or any type of consumption by or application to human or animals.