

TYK2 Polyclonal Antibody

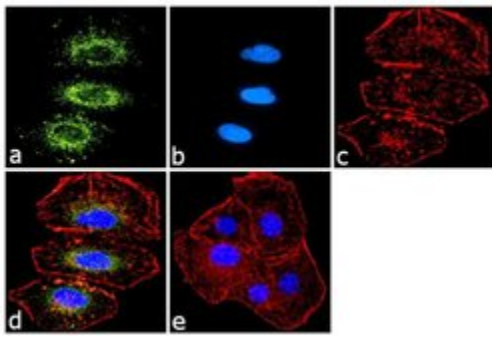
Product Details	
Size	100 µg
Species	Human, Non-human primate
Published Species	Mouse
Expression System	Rabbit / IgG
Class	Polyclonal
Type	Antibody
Conjugate	Unconjugated
Immunogen	Recombinant protein corresponding to Human TYK2 (aa 439-646)
Form	Liquid
Concentration	0.5 mg/mL
Purification	Affinity chromatography
Storage buffer	PBS, pH 7.2, with 0.1% BSA, 30% glycerol
Contains	0.09% sodium azide
Storage Conditions	Store at 4°C short term. For long term storage, store at -20°C, avoiding freeze/thaw cycles.
RRID	AB_2609023

Applications	Tested Dilution	Publications
Immunocytochemistry (ICC)	1 µg/mL	-
Immunofluorescence (IF)	1 µg/mL	-
Western Blot (WB)	0.5-1 µg/mL	1 Publication

Product Specific Information

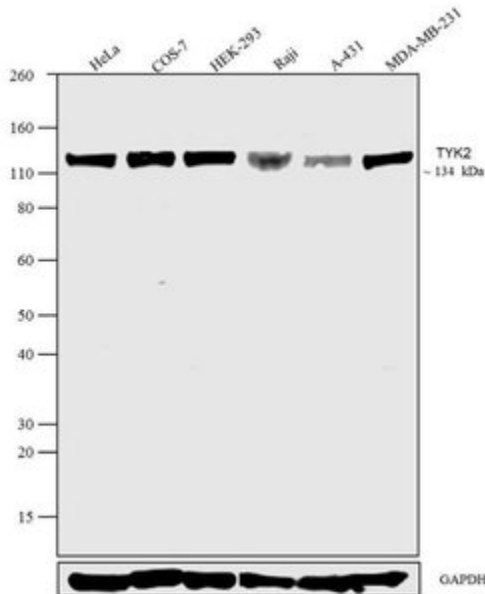
These Polyclonal antibodies are of rabbit origin developed by immunizing animals with proteins or peptides. The polyclonal antibody is purified by affinity purification from the rabbit sera generated after immunizing the rabbits with a specific type of protein or peptide. The purified antibody is tested for its functionality in various relevant research applications. The antibody is developed for Research Use Only and is non-hazardous or non-infectious in nature.

Product Images For TYK2 Polyclonal Antibody



TYK2 Antibody (720124) in IF

Immunofluorescence was performed on fixed and permeabilized A549 cells for detection of TYK-2 using Anti-TYK-2 Rabbit Polyclonal Antibody (Product # 720124, 1 µg/mL) and labeled with Goat anti-Rabbit IgG (H+L) Superclonal™ Secondary Antibody, Alexa Fluor® 488 conjugate (Product # A27034, 1:2000). Panel a) shows representative cells that were stained for detection and localization of TYK2 protein (green), Panel b) is stained for nuclei (blue) using SlowFade® Gold Antifade Mountant with DAPI (Product # S36938). Panel c) represents cytoskeletal F-actin staining using Alexa Fluor® 555 Rhodamine Phalloidin (Product # R415, 1:300). Panel d) is a composite image of Panels a, b and c clearly demonstrating Cytoplasmic localization of TYK-2. Panel e) represents control cells with no primary Antibody to assess background.



TYK2 Antibody (720124) in WB

Western blot analysis was performed on whole cell extracts (30 µg lysate) of HeLa (Lane 1), COS-7 (Lane 2), HEK-293 (Lane 3), Raji (Lane 4), A431 (Lane 5) and MDA-MB-231 (Lane 6). The blots were probed with Anti-TYK2 Rabbit Polyclonal Antibody (Product # 720124, 0.5-1 µg/mL) and detected by chemiluminescence using Goat anti-Rabbit IgG (H+L) Superclonal Secondary Antibody, HRP conjugate (Product # A27036, 0.4 µg/mL, 1:2500 dilution). A 134 kDa band corresponding to TYK2 was observed across cell lines tested. Known quantity of protein samples were electrophoresed using Novex® NuPAGE® 4-12% Bis-Tris gel (Product # NP0321BOX), XCell SureLock Electrophoresis System (Product # EI0002) and Novex® Sharp Pre-Stained Protein Standard (Product # LC5800). Resolved proteins were then transferred onto a nitrocellulose membrane with iBlot® Dry Blotting System (Product # IB21001). The membrane was probed with the relevant primary and secondary Antibody following blocking with 5% skimmed milk. Chemiluminescent detection was performed using Pierce™ ECL Western Blotting Substrate (Product # 32106).

[View more figures on thermofisher.com](https://www.thermofisher.com)

1 Reference

Western Blot (1)

Cancer medicine

TYK2 promotes malignant peripheral nerve sheath tumor progression through inhibition of cell death.

"Published figure using TYK2 polyclonal antibody (Product # 720124) in Western Blot"

Authors: Qin W, Godec A, Zhang X, Zhu C, Shao J, Tao Y, Bu X, Hirbe AC

Species

Mouse
Not Applicable

Dilution

1:1000
Not Cited

Year

2019

For Research Use Only. Not for use in diagnostic procedures. Not for resale without express authorization. Products are warranted to operate or perform substantially in conformance with published Product specifications in effect at the time of sale, as set forth in the Production documentation, specifications and/or accompanying package inserts ("Documentation"). No claim of suitability for use in applications regulated by FDA is made. The warranty provided herein is valid only when used by properly trained individuals. Unless otherwise stated in the Documentation, this warranty is limited to one year from date of shipment when the Product is subjected to normal, proper and intended usage. This warranty does not extend to anyone other than the Buyer. Any model or sample furnished to Buyer is merely illustrative of the general type and quality of goods and does not represent that any Product will conform to such model or sample. NO OTHER WARRANTIES, EXPRESS OR IMPLIED, ARE GRANTED INCLUDING WITHOUT LIMITATION, IMPLIED WARRANTIES OF MERCHANTABILITY, FITNESS FOR ANY PARTICULAR PURPOSE, OR NON-INFRINGEMENT. BUYER'S EXCLUSIVE REMEDY FOR NON-CONFORMING PRODUCTS DURING THE WARRANTY PERIOD IS LIMITED TO REPAIR, REPLACEMENT OF OR REFUND FOR THE NON-CONFORMING PRODUCT(S) AT SELLER'S SOLE OPTION. THERE IS NO OBLIGATION TO REPAIR, REPLACE OR REFUND FOR PRODUCTS AS THE RESULT OF (I) ACCIDENT, DISASTER OR EVENT OF FORCE MAJEURE, (II) MISUSE, FAULT OR NEGLIGENCE OF OR BY BUYER, (III) USE OF THE PRODUCTS IN A MANNER FOR WHICH THEY WERE NOT DESIGNED, OR (IV) IMPROPER STORAGE AND HANDLING OF THE PRODUCTS. Unless otherwise expressly stated on the Product or in the documentation accompanying the Product, the Product is intended for research only and is not to be used for any other purpose, including without limitation, unauthorized commercial uses, in vitro diagnostic uses, ex vivo or in vivo therapeutic uses, or any type of consumption by or application to human or animals.