

mGluR2 Polyclonal Antibody

| Product Details | |
|--------------------|--|
| Size | 100 µg |
| Species Reactivity | Human |
| Host/Isotype | Rabbit / IgG |
| Class | Polyclonal |
| Type | Antibody |
| Conjugate | Unconjugated |
| Immunogen | Peptide corresponding to Human GRM2 (aa 861-872) |
| Form | Liquid |
| Concentration | 0.5 mg/mL |
| Purification | Affinity chromatography |
| Storage buffer | PBS, pH 7.2, with 30% glycerol, 0.1% BSA |
| Contains | 0.09% sodium azide |
| Storage conditions | Store at 4°C short term. For long term storage, store at -20°C, avoiding freeze/thaw cycles. |
| RRID | AB_2633230 |

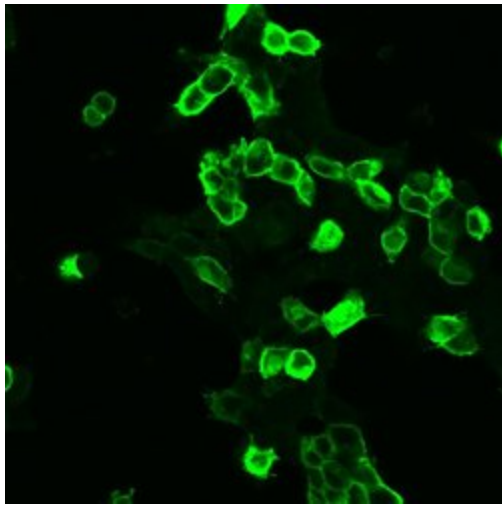
| Applications | Tested Dilution | Publications |
|------------------------------|-----------------|--------------|
| Western Blot (WB) | 1-2 µg/mL | - |
| Immunohistochemistry (IHC) | 2 µg/mL | - |
| Immunocytochemistry (ICC/IF) | 1-2 µg/mL | - |

Product Specific Information

These Polyclonal antibodies are of rabbit origin developed by immunizing animals with proteins or peptides. The polyclonal antibody is purified by affinity purification from the rabbit sera generated after immunizing the rabbits with a specific type of protein or peptide. The purified antibody is tested for its functionality in various relevant research applications. The antibody is developed for Research Use Only and is non-hazardous or non-infectious in nature.

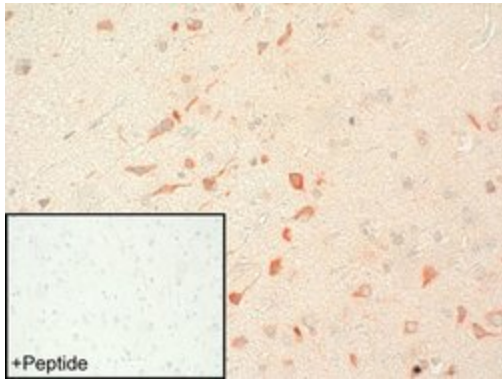
This antibody is predicted to react with Monkey, Rabbit and Bovine.

Product Images For mGluR2 Polyclonal Antibody



mGluR2 Antibody (720275) in ICC/IF

HEK 293 cells were grown on poly-L-lysine-coated coverslips overnight. Cells were then transiently transfected with mGLUR2. After 24 h, cells were fixed with 4% paraformaldehyde and 0.2% picric acid in phosphate buffer (pH 6.9) for 30 min at room temperature and washed several times with phosphate buffer. Specimens were permeabilized with ice-cold methanol and then incubated with Anti-mGLUR2 Rabbit Polyclonal Antibody (Product # 720275 at a concentration of 2 $\mu\text{g}/\text{mL}$). Cells were then incubated with Alexa488-conjugated secondary antibody for 2 h at room temperature, mounted and examined using a laser scanning confocal microscope. Note, strong staining of transfected cells and no staining of adjacent non-transfected cells.

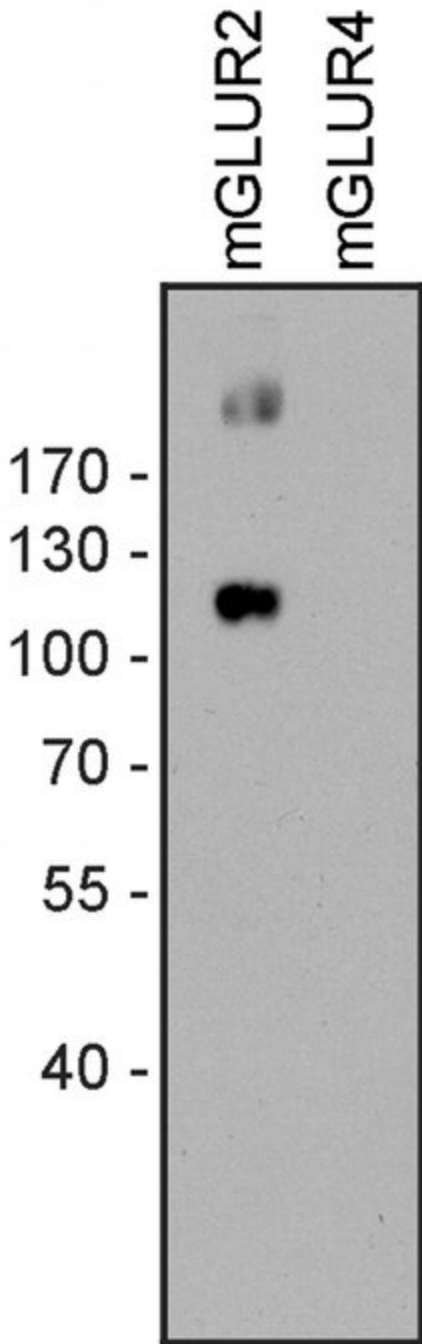


mGluR2 Antibody (720275) in IHC

Sections of human cerebral cortex were dewaxed, microwaved in citric acid and incubated with Anti-mGLUR2 Rabbit Polyclonal Antibody (Product # 720275 at a concentration of 2 $\mu\text{g}/\text{mL}$). Sections were then sequentially treated with biotinylated anti-rabbit IgG and AB solution. Sections were then developed in AEC and lightly counterstained with hematoxylin. Inset, for adsorption controls the antibody was incubated with 10 $\mu\text{g}/\text{mL}$ of the peptide used for immunizations (+ Peptide). Note, staining of neuronal somata and dendrites is completely neutralized by preincubation of the antibody with its immunizing peptide.

mGluR2 Antibody (720275) in WB

HEK 293 cells were transiently transfected with mGLUR2 or mGLUR4. After 48 h, cells were lysed in detergent buffer and glycoproteins were enriched using wheat germ lectin agarose beads. Receptors were eluted from the beads using SDS sample buffer for 20 min at 45 °C. Extracts were separated on 7.5% SDS-polyacrylamide gels and blotted onto PVDF membranes. Membranes were then incubated with Anti-mGLUR2 Rabbit Polyclonal Antibody (Product # 720275) at a concentration of 2 µg/mL. A 120 kDa (monomer), 240 kDa (dimer) band corresponding to mGluR2 was observed.



For Research Use Only. Not for use in diagnostic procedures. Not for resale without express authorization. Products are warranted to operate or perform substantially in conformance with published Product specifications in effect at the time of sale, as set forth in the Production documentation, specifications and/or accompanying package inserts ("Documentation"). No claim of suitability for use in applications regulated by FDA is made. The warranty provided herein is valid only when used by properly trained individuals. Unless otherwise stated in the Documentation, this warranty is limited to one year from date of shipment when the Product is subjected to normal, proper and intended usage. This warranty does not extend to anyone other than the Buyer. Any model or sample furnished to Buyer is merely illustrative of the general type and quality of goods and does not represent that any Product will conform to such model or sample. NO OTHER WARRANTIES, EXPRESS OR IMPLIED, ARE GRANTED INCLUDING WITHOUT LIMITATION, IMPLIED WARRANTIES OF MERCHANTABILITY, FITNESS FOR ANY PARTICULAR PURPOSE, OR NON-INFRINGEMENT. BUYER'S EXCLUSIVE REMEDY FOR NON-CONFORMING PRODUCTS DURING THE WARRANTY PERIOD IS LIMITED TO REPAIR, REPLACEMENT OF OR REFUND FOR THE NON-CONFORMING PRODUCT(S) AT SELLER'S SOLE OPTION. THERE IS NO OBLIGATION TO REPAIR, REPLACE OR REFUND FOR PRODUCTS AS THE RESULT OF (I) ACCIDENT, DISASTER OR EVENT OF FORCE MAJEURE, (II) MISUSE, FAULT OR NEGLIGENCE OF OR BY BUYER, (III) USE OF THE PRODUCTS IN A MANNER FOR WHICH THEY WERE NOT DESIGNED, OR (IV) IMPROPER STORAGE AND HANDLING OF THE PRODUCTS. Unless otherwise expressly stated on the Product or in the documentation accompanying the Product, the Product is intended for research only and is not to be used for any other purpose, including without limitation, unauthorized commercial uses, in vitro diagnostic uses, ex vivo or in vivo therapeutic uses, or any type of consumption by or application to human or animals.