

Cdc27 Polyclonal Antibody

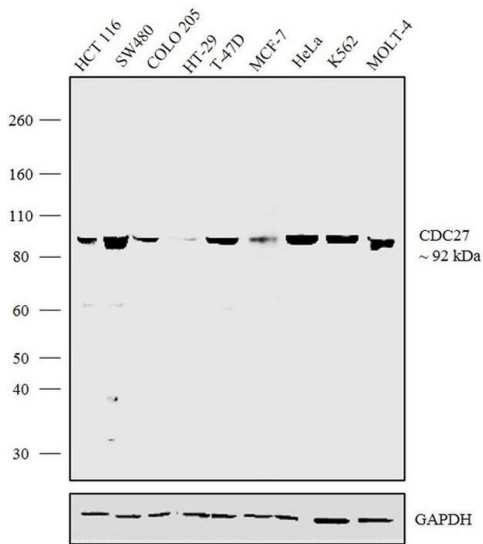
Product Details	
Size	100 µg
Species Reactivity	Human
Host/Isotype	Rabbit / IgG
Class	Polyclonal
Type	Antibody
Conjugate	Unconjugated
Immunogen	Protein corresponding to human CDC27 [aa258-aa447]
Form	Liquid
Concentration	0.5 mg/mL
Purification	Protein G
Storage buffer	PBS, pH 7.4, with 30% glycerol, 0.1% BSA
Contains	0.09% sodium azide
Storage conditions	Store at 4°C short term. For long term storage, store at -20°C, avoiding freeze/thaw cycles.
RRID	AB_2734798

Applications	Tested Dilution	Publications
Western Blot (WB)	1:5,000	-
Immunocytochemistry (ICC/IF)	1:250	-

Product Specific Information

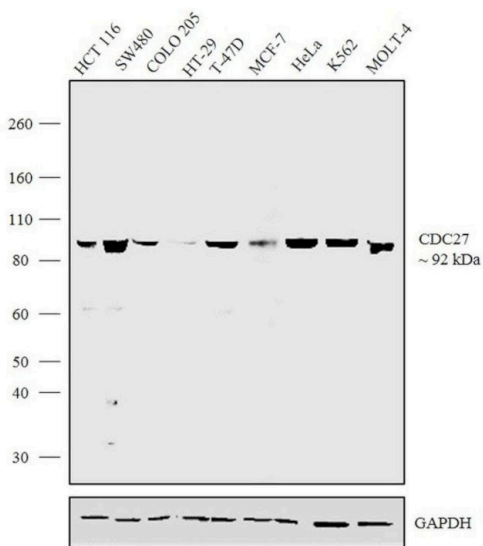
This antibody is predicted to react with Monkey, Pig, Bovine, Cat.

Product Images For Cdc27 Polyclonal Antibody



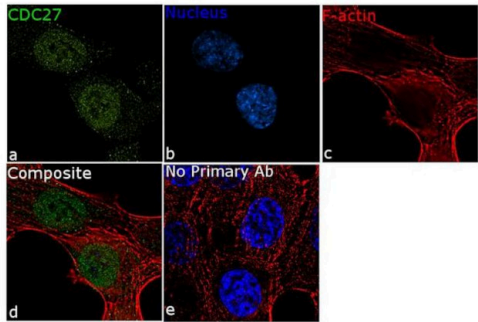
Cdc27 Antibody (720461) in WB

Western blot analysis was performed on Modified Whole cell extracts (1% SDS) (30 µg lysate) of HCT 116 (Lane 1), SW480 (Lane 2), COLO205 (Lane 3), HT-29 (Lane 4), T-47D (Lane 5), MCF-7 (Lane 6), HeLa (Lane 7), K562 (Lane 8) and MOLT-4 (Lane 9). The blot was probed with Polyclonal Anti-CDC27 Rabbit Polyclonal Antibody (Product # 720461, 1:5000 dilution) and detected by chemiluminescence using Goat anti-Rabbit IgG (Heavy Chain) Superclonal™ Secondary Antibody, HRP conjugate (Product # A27036, 0.25 µg/mL, 1:4000 dilution). A 92 kDa band corresponding to CDC27 was observed across the cell lines tested.



Cdc27 Antibody (720461)

Antibody specificity was demonstrated by detection of differential basal expression of the target across cell models owing to their inherent genetic constitution. Expression of CDC27 was tested in panel of colorectal cancer cell lines and breast cancer cell lines. High expression was observed in SW480, medium expression in HCT 116 and no expression in HT-29. Similar pattern was observed in breast cancer cell lines. T-47D (high expression) and MCF7 (Low expression) using CDC27 Rabbit Polyclonal Antibody (Product # 720461) in western blot. {RE}



Cdc27 Antibody (720461) in ICC/IF

For immunofluorescence analysis, HCT 116 cells were fixed and permeabilized for detection of endogenous CDC27 using Anti-CDC27 Rabbit Polyclonal Antibody (Product # 720461, 1:250) and labeled with Goat anti-Rabbit IgG (Heavy Chain) Superclonal™ Secondary Antibody, Alexa Fluor® 488 conjugate (Product # A27034, 1:2000). Panel a) shows representative cells that were stained for detection and localization of CDC27 protein (green), Panel b) is stained for nuclei (blue) using SlowFade® Gold Antifade Mountant with DAPI (Product # S36938). Panel c) represents cytoskeletal F-actin staining using Rhodamine Phalloidin (Product # R415, 1:300). Panel d) is a composite image of Panels a, b and c clearly demonstrating predominant nuclear localization of CDC27 Panel e) represents control cells without primary antibody to assess background. The images were captured at 60X magnification.

For Research Use Only. Not for use in diagnostic procedures. Not for resale without express authorization. Products are warranted to operate or perform substantially in conformance with published Product specifications in effect at the time of sale, as set forth in the Production documentation, specifications and/or accompanying package inserts ("Documentation"). No claim of suitability for use in applications regulated by FDA is made. The warranty provided herein is valid only when used by properly trained individuals. Unless otherwise stated in the Documentation, this warranty is limited to one year from date of shipment when the Product is subjected to normal, proper and intended usage. This warranty does not extend to anyone other than the Buyer. Any model or sample furnished to Buyer is merely illustrative of the general type and quality of goods and does not represent that any Product will conform to such model or sample. NO OTHER WARRANTIES, EXPRESS OR IMPLIED, ARE GRANTED INCLUDING WITHOUT LIMITATION, IMPLIED WARRANTIES OF MERCHANTABILITY, FITNESS FOR ANY PARTICULAR PURPOSE, OR NON INFRINGEMENT. BUYER'S EXCLUSIVE REMEDY FOR NON-CONFORMING PRODUCTS DURING THE WARRANTY PERIOD IS LIMITED TO REPAIR, REPLACEMENT OF OR REFUND FOR THE NON-CONFORMING PRODUCT(S) AT SELLER'S SOLE OPTION. THERE IS NO OBLIGATION TO REPAIR, REPLACE OR REFUND FOR PRODUCTS AS THE RESULT OF (I) ACCIDENT, DISASTER OR EVENT OF FORCE MAJEURE, (II) MISUSE, FAULT OR NEGLIGENCE OF OR BY BUYER, (III) USE OF THE PRODUCTS IN A MANNER FOR WHICH THEY WERE NOT DESIGNED, OR (IV) IMPROPER STORAGE AND HANDLING OF THE PRODUCTS. Unless otherwise expressly stated on the Product or in the documentation accompanying the Product, the Product is intended for research only and is not to be used for any other purpose, including without limitation, unauthorized commercial uses, in vitro diagnostic uses, ex vivo or in vivo therapeutic uses, or any type of consumption by or application to human or animals.