

CD19 Monoclonal Antibody (SJ25C1), Super Bright™ 780, eBioscience™

Product Details	
Size	100 Tests
Species Reactivity	Human
Host/Isotype	Mouse / IgG1, kappa
Recommended Isotype Control	Mouse IgG1 kappa Isotype Control (P3.6.2.8.1), Super Bright™ 780, eBioscience™
Class	Monoclonal
Type	Antibody
Clone	SJ25C1
Conjugate	Super Bright™ 780
Excitation/Emission Max	413/780 nm
Form	Liquid
Concentration	5 µL/Test
Purification	Affinity chromatography
Storage buffer	PBS, pH 7.2, with BSA
Contains	0.09% sodium azide
Storage conditions	4° C, store in dark, DO NOT FREEZE!
RRID	AB_2724070

Applications	Tested Dilution	Publications
Immunohistochemistry (IHC)	-	1 Publication
Flow Cytometry (Flow)	5 µL (0.125 µg)/test	6 Publications

Product Specific Information

Description: The SJ25C1 monoclonal antibody reacts with human CD19, a 95 kDa transmembrane glycoprotein. CD19 is expressed by B cells during all stages of development excluding the terminally differentiated plasma cells. Follicular dendritic cells also express this molecule. CD19, along with CD21, CD81, Leu13, and MHC class II, form a multimolecular complex that associates with the BCR. Signaling through CD19 induces tyrosine phosphorylation, calcium flux and proliferation of B cells. The SJ25C1 antibody and the HIB19 monoclonal antibody recognize overlapping epitopes.

Applications Reported: This SJ25C1 antibody has been reported for use in flow cytometric analysis.

Applications Tested: This SJ25C1 antibody has been pre-diluted and tested by flow cytometric analysis of normal human peripheral blood cells. This may be used at 5 µL (0.125 µg) per test. A test is defined as the amount (µg) of antibody that will stain a cell sample in a final volume of 100 µL. Cell number should be determined empirically but can range from 10⁵ to 10⁸ cells/test.

Super Bright 780 is a tandem dye that can be excited with the violet laser line (405 nm) and emits at 780 nm. We recommend using a 780/60 bandpass filter. Please make sure that your instrument is capable of detecting this fluorochrome.

When using two or more Super Bright dye-conjugated antibodies in a staining panel, it is recommended to use Super Bright Complete Staining Buffer (Product # SB-4401) to minimize any non-specific polymer interactions. Please refer to the datasheet for Super Bright Staining Buffer for more information.

In some experiments, we have observed that compensation values for Super Bright 780-conjugated antibodies are higher in the violet 450/50 channel when using UltraComp eBeads microspheres (Product # 01-2222-42) as compared to single-color stained cells. In such circumstances, we would recommend setting compensation with cells. We have also observed this in some experiments using AbC Total Antibody Compensation beads (Product # A10497).

Light sensitivity: This tandem dye is sensitive to photo-induced oxidation. Please protect this vial and stained samples from light.

Fixation: Samples can be stored in IC Fixation Buffer (Product # 00-8222) (100 μ L of cell sample + 100 μ L of IC Fixation Buffer) or 1-step Fix/Lyse Solution (Product # 00-5333) for up to 3 days in the dark at 4°C with minimal impact on brightness and FRET efficiency/compensation. Some generalizations regarding fluorophore performance after fixation can be made, but clone specific performance should be determined empirically.

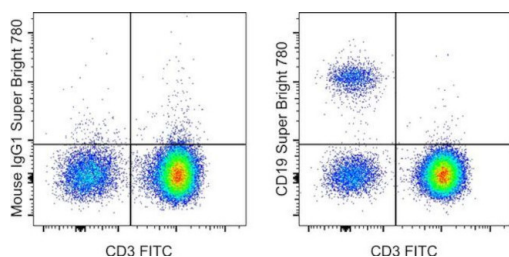
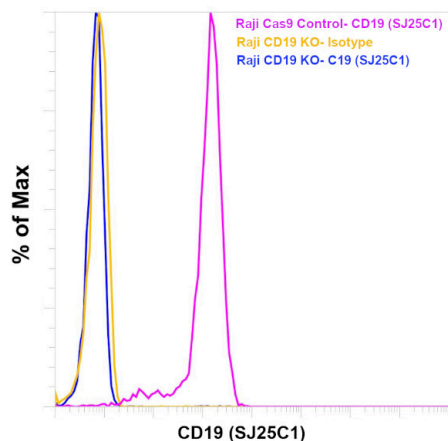
Excitation: 405 nm; **Emission:** 780 nm; **Laser:** Violet Laser

Super Bright Polymer Dyes are sold under license from Becton, Dickinson and Company.

Product Images For CD19 Monoclonal Antibody (SJ25C1), Super Bright™ 780, eBioscience™

CD19 Antibody (78-0198-42)

Antibody clone (SJ25C1) specificity was demonstrated by CRISPR-Cas9 mediated knockout of target protein. Loss of signal was observed for target protein in CD19 KO cells (blue histogram) compared to the control Cas9 cells (pink histogram) using CD19 antibody (SJ25C1). Yellow histogram represents staining with the isotype control. {KO}



CD19 Antibody (78-0198-42) in Flow

Normal human peripheral blood cells were stained with CD3 Monoclonal Antibody, FITC (Product # 11-0037-82) and Mouse IgG1 kappa Isotype Control, Super Bright 780 (Product # 78-4714-82) (left) or CD19 Monoclonal Antibody, Super Bright 780 (right). Cells in the lymphocyte gate were used for analysis.

[View more figures on thermofisher.com](https://www.thermofisher.com)

7 References

Immunohistochemistry (1)

Nature communications

Innate-like self-reactive B cells infiltrate human renal allografts during transplant rejection.

"Published figure using CD19 monoclonal antibody (Product # 78-0198-42) in Immunohistochemistry"

Authors: Asano Y, Daccache J, Jain D, Ko K, Kinloch A, Veselits M, Wolfgeher D, Chang A, Josephson M, Cunningham P, Tambur A, Khan AA, Pillai S, Chong AS, Clark MR

Year
2021

Flow Cytometry (6)

Biomolecules

Tyrosine Kinase Inhibitors Target B Lymphocytes.

"Published figure using CD19 monoclonal antibody (Product # 78-0198-42) in Flow Cytometry"

Authors: Upfold NLE, Petakh P, Kamyshnyi A, Oksenyich V

Year
2023

Indian journal of pharmacology

Evaluation of peripheral lymphocyte subsets in acne vulgaris patients before and after systemic isotretinoin treatment.

"Published figure using CD19 monoclonal antibody (Product # 78-0198-42) in Flow Cytometry"

Authors: Gunaydin SD, Tezcan I

Year
2022

[View more Flow references on thermofisher.com](#)

More applications with references on thermofisher.com

For Research Use Only. Not for use in diagnostic procedures. Not for resale without express authorization. Products are warranted to operate or perform substantially in conformance with published Product specifications in effect at the time of sale, as set forth in the Production documentation, specifications and/or accompanying package inserts ("Documentation"). No claim of suitability for use in applications regulated by FDA is made. The warranty provided herein is valid only when used by properly trained individuals. Unless otherwise stated in the Documentation, this warranty is limited to one year from date of shipment when the Product is subjected to normal, proper and intended usage. This warranty does not extend to anyone other than the Buyer. Any model or sample furnished to Buyer is merely illustrative of the general type and quality of goods and does not represent that any Product will conform to such model or sample. NO OTHER WARRANTIES, EXPRESS OR IMPLIED, ARE GRANTED INCLUDING WITHOUT LIMITATION, IMPLIED WARRANTIES OF MERCHANTABILITY, FITNESS FOR ANY PARTICULAR PURPOSE, OR NON-INFRINGEMENT. BUYER'S EXCLUSIVE REMEDY FOR NON-CONFORMING PRODUCTS DURING THE WARRANTY PERIOD IS LIMITED TO REPAIR, REPLACEMENT OF OR REFUND FOR THE NON-CONFORMING PRODUCT(S) AT SELLER'S SOLE OPTION. THERE IS NO OBLIGATION TO REPAIR, REPLACE OR REFUND FOR PRODUCTS AS THE RESULT OF (I) ACCIDENT, DISASTER OR EVENT OF FORCE MAJEURE, (II) MISUSE, FAULT OR NEGLIGENCE OF OR BY BUYER, (III) USE OF THE PRODUCTS IN A MANNER FOR WHICH THEY WERE NOT DESIGNED, OR (IV) IMPROPER STORAGE AND HANDLING OF THE PRODUCTS. Unless otherwise expressly stated on the Product or in the documentation accompanying the Product, the Product is intended for research only and is not to be used for any other purpose, including without limitation, unauthorized commercial uses, in vitro diagnostic uses, ex vivo or in vivo therapeutic uses, or any type of consumption by or application to human or animals.