

CD8a Monoclonal Antibody (RPA-T8), eVolve 655, eBioscience™

Product Details

Size	100 Tests
Species Reactivity	Human
Published Species	Human
Host/Isotype	Mouse / IgG1, kappa
Class	Monoclonal
Type	Antibody
Clone	RPA-T8
Conjugate	eVolve® 655
Form	Liquid
Concentration	5 µL/Test
Storage conditions	4° C, store in dark, DO NOT FREEZE!
RRID	AB_2574786

Applications

Flow Cytometry (Flow)

Tested Dilution

5 µL/test

Publications

8 Publications

Product Specific Information

Notice: The eVolve™ line of antibody conjugates will be discontinued at the end of February, 2018 and replaced with our improved Invitrogen™ eBioscience™ Super Bright conjugated antibodies for flow cytometry. Individual eVolve catalog numbers will become unavailable as inventory depletes. This item has a corresponding Super Bright 645 format available – please see Product # 64-0088-42. We will continue to offer a selection of Qdot conjugated antibodies.

Description: The RPA-T8 monoclonal antibody reacts with the human CD8a molecule, an approximately 32-34 kDa cell surface receptor expressed either as a heterodimer with the CD8 beta chain (CD8 alpha/beta) or as a homodimer (CD8 alpha/alpha). A majority of thymocytes and a subpopulation of mature T cells and NK cells express CD8a. CD8 binds to MHC class I and through its association with protein tyrosine kinase p56lck plays a role in T-cell development and activation of mature T cells.

Applications Reported: This RPA-T8 antibody has been reported for use in flow cytometric analysis.

Applications Tested: This RPA-T8 antibody has been pre-titrated and tested by flow cytometric analysis of normal human peripheral blood cells. This can be used at 5 µL per test. A test is defined as the amount of antibody that will stain a cell sample in a final volume of 100 µL. Cell number should be determined empirically but can range from 10⁵ to 10⁸ cells/test.

For best results when using antibodies conjugated to eVolve™, we recommend a quick spin of the vial before use and avoid touching the bottom of the vial with the pipet tip.

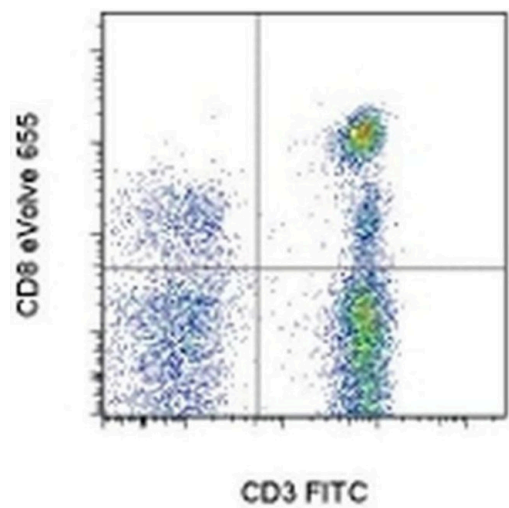
Laser/Filter Recommendation: eVolve™ 655 can be optimally excited with laser lines from 325-405 nm, and emits near 655 nm. We recommend using the violet (405 nm) laser line for excitation and a 630LP with a 660/40 bandpass filter, or equivalent, for detection.

Fixation Recommendation: Antibodies conjugated to eVolve™ are compatible with eBioscience's fixation and permeabilization buffers.

Excitation: 350-635 nm; Emission: 657 nm; Laser: Ultraviolet Laser, Violet Laser

Storage and handling: For best results when using antibodies conjugated to eVolve™, we recommend a quick spin of the vial before use and avoid touching the bottom of the vial with the pipet tip.

Product Images For CD8a Monoclonal Antibody (RPA-T8), eVolve 655, eBioscience™



CD8a Antibody (86-0088-42) in Flow
Staining of normal human peripheral blood cells with Anti-Human CD3 FITC (Product # 11-0036-42) and Anti-Human CD8a eVolve™ 655. Cells in the lymphocyte gate were used for analysis.

View more figures on thermofisher.com

8 References

Flow Cytometry (8)

<p>Molecular therapy oncolytics</p> <p>A Cross-Reactive Small Protein Binding Domain Provides a Model to Study Off-Tumor CAR-T Cell Toxicity.</p> <p>"Published figure using CD8a monoclonal antibody (Product # 86-0088-42) in Flow Cytometry"</p> <p>Authors: Hammill JA,Kwiecien JM,Dvorkin-Gheva A,Lau VWC,Baker C,Wu Y,Bezverbnaya K,Aarts C,Heslen CW, Denisova GF,Derocher H,Milne K,Nelson BH,Bramson JL</p>	<p>Year</p> <p>2020</p>
<p>Stem cells and development</p> <p>Immunological Properties of Neural Crest Cells Derived from Human Induced Pluripotent Stem Cells.</p> <p>"Published figure using CD8a monoclonal antibody (Product # 86-0088-42) in Flow Cytometry"</p> <p>Authors: Fujii S,Yoshida S,Inagaki E,Hatou S,Tsubota K,Takahashi M,Shimmura S,Sugita S</p>	<p>Year</p> <p>2019</p>

[View more Flow references on thermofisher.com](https://thermofisher.com)

More applications with references on thermofisher.com

For Research Use Only. Not for use in diagnostic procedures. Not for resale without express authorization. Products are warranted to operate or perform substantially in conformance with published Product specifications in effect at the time of sale, as set forth in the Production documentation, specifications and/or accompanying package inserts ("Documentation"). No claim of suitability for use in applications regulated by FDA is made. The warranty provided herein is valid only when used by properly trained individuals. Unless otherwise stated in the Documentation, this warranty is limited to one year from date of shipment when the Product is subjected to normal, proper and intended usage. This warranty does not extend to anyone other than the Buyer. Any model or sample furnished to Buyer is merely illustrative of the general type and quality of goods and does not represent that any Product will conform to such model or sample. NO OTHER WARRANTIES, EXPRESS OR IMPLIED, ARE GRANTED INCLUDING WITHOUT LIMITATION, IMPLIED WARRANTIES OF MERCHANTABILITY, FITNESS FOR ANY PARTICULAR PURPOSE, OR NON-INFRINGEMENT. BUYER'S EXCLUSIVE REMEDY FOR NON-CONFORMING PRODUCTS DURING THE WARRANTY PERIOD IS LIMITED TO REPAIR, REPLACEMENT OF OR REFUND FOR THE NON-CONFORMING PRODUCT(S) AT SELLER'S SOLE OPTION. THERE IS NO OBLIGATION TO REPAIR, REPLACE OR REFUND FOR PRODUCTS AS THE RESULT OF (i) ACCIDENT, DISASTER OR EVENT OF FORCE MAJEURE, (ii) MISUSE, FAULT OR NEGLIGENCE OF OR BY BUYER, (iii) USE OF THE PRODUCTS IN A MANNER FOR WHICH THEY WERE NOT DESIGNED, OR (iv) IMPROPER STORAGE AND HANDLING OF THE PRODUCTS. Unless otherwise expressly stated on the Product or in the documentation accompanying the Product, the Product is intended for research only and is not to be used for any other purpose, including without limitation, unauthorized commercial uses, in vitro diagnostic uses, ex vivo or in vivo therapeutic uses, or any type of consumption by or application to human or animals.