

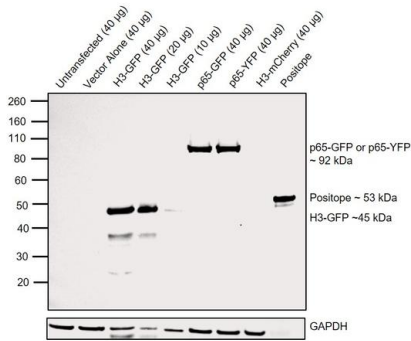
GFP Polyclonal Antibody, Alexa Fluor™ 594

Product Details	
Size	100 µL
Species Reactivity	Tag
Published Species	Tag
Host/Isotype	Rabbit / IgG
Class	Polyclonal
Type	Antibody
Conjugate	Alexa Fluor™ 594
Excitation/Emission Max	590/618 nm
Immunogen	The GFP was isolated directly from the jellyfish Aequorea victoria.
Form	Liquid
Concentration	2 mg/mL
Purification	Ion-exchange chromatography
Storage buffer	PBS, pH 7.5
Contains	5mM sodium azide
Storage conditions	4° C, store in dark
RRID	AB_221478

Applications	Tested Dilution	Publications
Western Blot (WB)	1:2,000	1 Publication
Immunohistochemistry (IHC)	Assay-dependent	12 Publications
Immunohistochemistry (Frozen) (IHC (F))	-	3 Publications
Immunocytochemistry (ICC/IF)	1-10 µg/mL	9 Publications
Immunoprecipitation (IP)	-	1 Publication

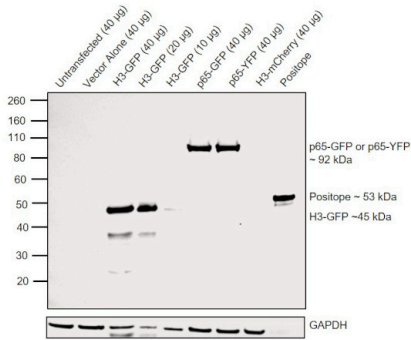
GFP Antibody (A-21312) in WB

Western Blot was performed using Anti-GFP Polyclonal Antibody, Alexa Fluor 594 (Product # A-21312) by loading whole cell extracts of untransfected and transiently transfected HEK-293E lysates: untransfected, 40 µg (Lane 1), empty vector control, 40 µg (Lane 2), H3-GFP, 40 µg (Lane 3), H3-GFP, 20 µg (Lane 4), H3-GFP, 10 µg (Lane 5), p65-GFP, 40 µg (Lane 6), His-p65-YFP, 40 µg (Lane 7), H3-mCherry, 40 µg (Lane 8) and 25 ng Positope (Lane 9) were electrophoresed using NuPAGE™ 4-12% Bis-Tris Protein Gel (Product # NP0322BOX). Resolved proteins were then transferred onto a nitrocellulose membrane (Product # IB23001) by iBlot® 2 Dry Blotting System (Product # IB21001). A ~45 kDa band of H3-GFP and a ~92 kDa band of p65-GFP were observed in transfected lysates on probing with primary antibody (1:2000 dilution) and detected by chemiluminescence with Goat anti-Rabbit IgG (Heavy Chain) Superclonal™ Secondary Antibody, HRP (Product # A27036, 1:4000 dilution) using the iBright FL 1500 (Product # A44241). Positope (Product # R90050) is a 53 kDa recombinant protein consisting multiple epitope tags, which has been used as a positive control for GFP detection. This product also detects Yellow Fluorescent Protein (YFP), a variant of GFP as observed in Lane 7. No cross-reactivity was seen with mCherry (RFP family) expressing lysate.



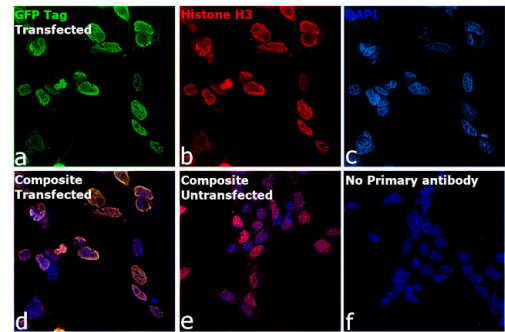
GFP Antibody (A-21312)

Antibody specificity was demonstrated by detection of different targets fused to GFP tag in transiently transfected lysates tested. Relative detection of GFP tag was observed across different proteins fused with GFP in H3-GFP (Lane 3-5) and p65-GFP (Lane 6). GFP-variant, YFP is also being detected in His-p65-YFP lysate (Lane 7), using Anti-GFP Polyclonal Antibody, Alexa Fluor 594 (Product # A-21312) in Western Blot. {RE}



GFP Antibody (A-21312) in ICC/IF

Immunofluorescent analysis of GFP Tag was performed using H3-GFP Tag transfected HEK-293 cells. The cells were fixed with 4% paraformaldehyde for 10 minutes, permeabilized with 0.1% Triton™ X-100 for 15 minutes and blocked with 2% BSA for 1 hour at room temperature. The cells were labeled with GFP Polyclonal Antibody, Alexa Fluor 594 (Product # A-21312) at 1:100 dilution and Histone H3 Monoclonal Antibody (865R2) Product # AHO1432 at 1:200 dilution in 0.1% BSA, incubated at 4 degree celsius overnight and then labeled with Goat anti-Mouse IgM (Heavy Chain) Secondary Antibody, Alexa Fluor 647 (Product # A-21238) at a dilution of 1:2000 for 45 minutes at room temperature. Panel a (Nuclei: Green) represents GFP Polyclonal Antibody, Alexa Fluor 594, a green pseudo-colour has been given after image capture. Panel b (Nuclei: Red) represents Histone H3. Panel c (Nuclei: Blue) represents ProLong™ Diamond Antifade Mountant with DAPI (Product # P36962). Panel d represents the merged image showing the co-localization of nuclear signals in transfected cells. Panel e represents untransfected HEK cells. Panel f represents control cells with no primary antibody to assess background. The images were captured at 60X magnification.



View more figures on thermofisher.com

Western Blot (1)

Frontiers in cardiovascular medicine	Year 2022
E-Selectin-Overexpressing Mesenchymal Stem Cell Therapy Confers Improved Reperfusion, Repair, and Regeneration in a Murine Critical Limb Ischemia Model.	Species Tag
"A-21312 was used in Immunohistochemistry to confer increased limb reperfusion, neovascularization, improved recovery, decreased muscle atrophy, and thus offers a potential therapeutic method for future clinical studies."	
Authors: Quiroz HJ,Valencia SF,Shao H,Li Y,Ortiz YY,Parikh PP,Lassance-Soares RM,Vazquez-Padron RI,Liu ZJ, Velazquez OC	

Immunohistochemistry (12)

Frontiers in cardiovascular medicine	Year 2022
E-Selectin-Overexpressing Mesenchymal Stem Cell Therapy Confers Improved Reperfusion, Repair, and Regeneration in a Murine Critical Limb Ischemia Model.	Species Tag
"A-21312 was used in Immunohistochemistry to confer increased limb reperfusion, neovascularization, improved recovery, decreased muscle atrophy, and thus offers a potential therapeutic method for future clinical studies."	
Authors: Quiroz HJ,Valencia SF,Shao H,Li Y,Ortiz YY,Parikh PP,Lassance-Soares RM,Vazquez-Padron RI,Liu ZJ, Velazquez OC	

Cell reports	Year 2020
Sleep Induction by Mechanosensory Stimulation in Drosophila.	Species Tag
"A-21312 was used in Immunohistochemistry to suggest that habituation plays a significant role in sleep induction by vibration in Drosophila."	
Authors: Öztürk-Çolak A,Inami S,Buchler JR,McClanahan PD,Cruz A,Fang-Yen C,Koh K	
	Dilution 1:1500

View more IHC references on thermofisher.com

Immunohistochemistry (Frozen) (3)

Theranostics	Year 2017
Polymer-DNA Nanoparticle-Induced CXCR4 Overexpression Improves Stem Cell Engraftment and Tissue Regeneration in a Mouse Hindlimb Ischemia Model.	Species Tag
"A-21312 was used in immunohistochemistry - frozen section to utilize a mouse hindlimb ischemia model to show improvement of tissue regeneration and stem cell engraftment through polymer-DNA nanoparticle-induced CXCR4 overexpression"	
Authors: Deveza L,Choi J,Lee J,Huang N,Cooke J,Yang F	
	Dilution 1:200

View more IHC (F) references on thermofisher.com

More applications with references on thermofisher.com

- ICC/IF (9)
- IP (1)

For Research Use Only. Not for use in diagnostic procedures. Not for resale without express authorization. Products are warranted to operate or perform substantially in conformance with published Product specifications in effect at the time of sale, as set forth in the Production documentation, specifications and/or accompanying package inserts ("Documentation"). No claim of suitability for use in applications regulated by FDA is made. The warranty provided herein is valid only when used by properly trained individuals. Unless otherwise stated in the Documentation, this warranty is limited to one year from date of shipment when the Product is subjected to normal, proper and intended usage. This warranty does not extend to anyone other than the Buyer. Any model or sample furnished to Buyer is merely illustrative of the general type and quality of goods and does not represent that any Product will conform to such model or sample. NO OTHER WARRANTIES, EXPRESS OR IMPLIED, ARE GRANTED INCLUDING WITHOUT LIMITATION, IMPLIED WARRANTIES OF MERCHANTABILITY, FITNESS FOR ANY PARTICULAR PURPOSE, OR NON INFRINGEMENT. BUYER'S EXCLUSIVE REMEDY FOR NON-CONFORMING PRODUCTS DURING THE WARRANTY PERIOD IS LIMITED TO REPAIR, REPLACEMENT OF OR REFUND FOR THE NON-CONFORMING PRODUCT(S) AT SELLER'S SOLE OPTION. THERE IS NO OBLIGATION TO REPAIR, REPLACE OR REFUND FOR PRODUCTS AS THE RESULT OF (I) ACCIDENT, DISASTER OR EVENT OF FORCE MAJEURE, (II) MISUSE, FAULT OR NEGLIGENCE OF OR BY BUYER, (III) USE OF THE PRODUCTS IN A MANNER FOR WHICH THEY WERE NOT DESIGNED, OR (IV) IMPROPER STORAGE AND HANDLING OF THE PRODUCTS. Unless otherwise expressly stated on the Product or in the documentation accompanying the Product, the Product is intended for research only and is not to be used for any other purpose, including without limitation, unauthorized commercial uses, in vitro diagnostic uses, ex vivo or in vivo therapeutic uses, or any type of consumption by or application to human or animals.