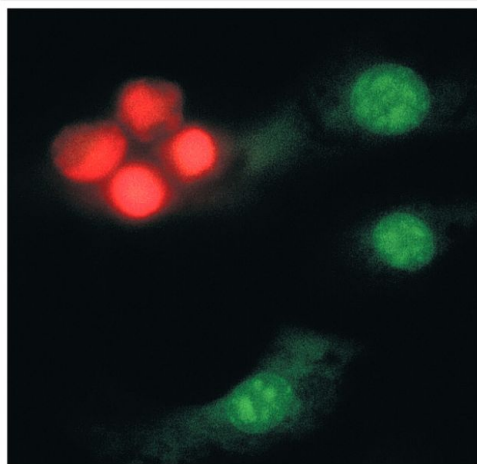


Dinitrophenyl-KLH Polyclonal Antibody

Product Details	
Size	500 µL
Species Reactivity	Chemical
Published Species	Chemical, Human
Host/Isotope	Rabbit / IgG
Class	Polyclonal
Type	Antibody
Conjugate	Unconjugated
Immunogen	Dinitrophenyl-KLH
Form	Liquid
Concentration	2 mg/mL
Purification	purified
Storage buffer	PBS, pH 7.2
Contains	5mM sodium azide
Storage Conditions	4° C
RRID	AB_221552

Applications	Tested	Dilution	Published
Immunofluorescence (IF)	-		2 Publications
Western Blot (WB)	-		11 Publications
Immunohistochemistry (IHC)	✓	Assay Dependent	5 Publications
Immunocytochemistry (ICC)	✓	Assay Dependent	14 Publications
Miscellaneous PubMed (MISC)	-	1:2500	6 Publications
Flow Cytometry (Flow)	✓	Assay Dependent	1 Publication
Neutralization (Neu)	-		4 Publications
Immunohistochemistry (Frozen) (IHC (F))	-		5 Publications
ELISA (ELISA)	-	1:1000	3 Publications
Immunoprecipitation (IP)	-		1 Publication

Product Images For Dinitrophenyl-KLH Polyclonal Antibody

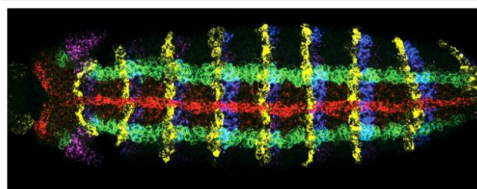


Dinitrophenyl-KLH Antibody (A-6430) in IF

A mixed population of trinitrophenyl-sensitized and nonsensitized bovine pulmonary artery endothelial cells that have been probed with anti-dinitrophenyl-KLH antibody (Product # A-6430), incubated with rabbit complement and then stained using the LIVE/DEAD® Reduced Biohazard Viability/Cytotoxicity Kit #1 (Product # L-7013). With this kit, the membrane-permeant SYTO® 10 dye labels the nucleic acids of live cells with green fluorescence, and the membrane-impermeant DEAD Red™ dye labels nucleic acids of membrane-compromised cells with red fluorescence. Subsequent aldehyde-based fixation inactivates pathogens without distorting the original staining pattern. This multiple-exposure image was acquired with bandpass optical filters appropriate for fluorescein and Texas Red® dyes.

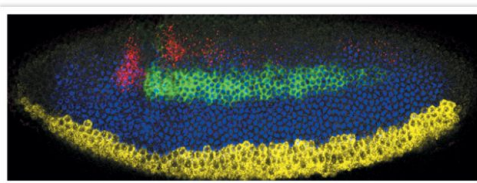
Dinitrophenyl-KLH Antibody (A-6430) in IF

Simultaneous detection of expression of five genes in a whole-mount *Drosophila* embryo by fluorescence in situ hybridization (FISH) with five RNA probes. Red: *sog* labeled using aminoallyl UTP (Product # A21663, A32765) and Alexa Fluor® 647 succinimidyl ester (Product # A-20006, A20106). Green: *ind* labeled with DNP, followed by rabbit anti-dinitrophenyl-KLH IgG antibody (Product # A-6430) pre-labeled with the Zenon® Alexa Fluor® 555 Rabbit IgG Labeling Kit (Product # Z-25305). Blue: *en* labeled with biotin and detected with HRP-streptavidin and Alexa Fluor® 405 tyramide (TSA™ Kit 39, Product # T30952). Yellow: *wg* labeled with digoxigenin and detected with sheep anti-digoxigenin IgG antibody and Alexa Fluor® 594 Donkey Anti-Sheep IgG antibody (Product # A-11016). Magenta: *msh* labeled with fluorescein and detected with mouse anti-fluorescein/Oregon Green® IgG_{2a} antibody (Product # A-6421) and Alexa Fluor® 488 Goat Anti-Mouse IgG antibody (Product # A-11001, A11029). Image contributed by Dave Kosman and Ethan Bier, University of California, San Diego.



Dinitrophenyl-KLH Antibody (A-6430) in IF

Four-color fluorescence in situ hybridization on a *Drosophila* embryo. A late blastoderm stage (nuclear cycle 14) embryo was probed with four different RNA probes. Blue: *sog* labeled with DNP, followed by a rabbit anti-dinitrophenyl-KLH IgG antibody (Product # A-6430) detected with an Alexa Fluor® 647 chicken anti-rabbit IgG antibody (Product # A-21443). Green: *ind* labeled with biotin, followed by streptavidin HRP and Alexa Fluor® 350 tyramide (TSA Kit #27, Product # T-20937). Red: *msh* labeled with digoxigenin followed by sheep anti-digoxigenin antibody detected with an Alexa Fluor® 488 donkey anti-sheep IgG antibody (Product # A-11015). Yellow: *sna* labeled with fluorescein followed by mouse anti-fluorescein antibody detected with an Alexa Fluor® 555 goat anti-mouse IgG antibody (Product # A-21424). Image contributed by Dave Kosman and Ethan Bier, University of California, San Diego.



[View more figures on thermofisher.com](http://thermofisher.com)

52 References

Immunofluorescence (2)

Redox biology

Impact of carbonylation on glutathione peroxidase-1 activity in human hyperglycemic endothelial cells.

"Published figure using Dinitrophenyl-KLH polyclonal antibody (Product # A-6430) in Immunofluorescence"
Authors: Sultan CS, Saackel A, Stank A, Fleming T, Fedorova M, Hoffmann R, Wade RC, Hecker M, Wagner AH

Species
Not Applicable

Dilution
Not Cited

Year
2018

Nature communications

A long-range cis-regulatory element for class I odorant receptor genes.

Authors: Iwata T, Niimura Y, Kobayashi C, Shirakawa D, Suzuki H, Enomoto T, Touhara K, Yoshihara Y, Hirota J

Species
Chemical

Dilution
Not Cited

Year
2017

Western Blot (11)

Redox biology

Impact of carbonylation on glutathione peroxidase-1 activity in human hyperglycemic endothelial cells.

"Published figure using Dinitrophenyl-KLH polyclonal antibody (Product # A-6430) in Immunofluorescence"
Authors: Sultan CS, Saackel A, Stank A, Fleming T, Fedorova M, Hoffmann R, Wade RC, Hecker M, Wagner AH

Species
Not Applicable

Dilution
Not Cited

Year
2018

Oxidative medicine and cellular longevity

Intracellular oxidant activity, antioxidant enzyme defense system, and cell senescence in fibroblasts with trisomy 21.

"Published figure using Dinitrophenyl-KLH polyclonal antibody (Product # A-6430) in Western Blot"
Authors: Rodríguez-Sureda V, Vilches Á, Sánchez O, Audí L, Domínguez C

Species
Human
Chemical

Dilution
Not Cited
Not Cited

Year
2015

[View more WB references on thermofisher.com](#)

More applications with references on thermofisher.com

[IHC \(5\)](#) [ICC \(14\)](#) [MISC \(6\)](#) [Flow \(1\)](#) [Neu \(4\)](#) [IHC \(F\) \(5\)](#) [ELISA \(3\)](#) [IP \(1\)](#)

For Research Use Only. Not for use in diagnostic procedures. Not for resale without express authorization. Products are warranted to operate or perform substantially in conformance with published Product specifications in effect at the time of sale, as set forth in the Production documentation, specifications and/or accompanying package inserts ("Documentation"). No claim of suitability for use in applications regulated by FDA is made. The warranty provided herein is valid only when used by properly trained individuals. Unless otherwise stated in the Documentation, this warranty is limited to one year from date of shipment when the Product is subjected to normal, proper and intended usage. This warranty does not extend to anyone other than the Buyer. Any model or sample furnished to Buyer is merely illustrative of the general type and quality of goods and does not represent that any Product will conform to such model or sample. NO OTHER WARRANTIES, EXPRESS OR IMPLIED, ARE GRANTED INCLUDING WITHOUT LIMITATION, IMPLIED WARRANTIES OF MERCHANTABILITY, FITNESS FOR ANY PARTICULAR PURPOSE, OR NON INFRINGEMENT. BUYER'S EXCLUSIVE REMEDY FOR NON-CONFORMING PRODUCTS DURING THE WARRANTY PERIOD IS LIMITED TO REPAIR, REPLACEMENT OF OR REFUND FOR THE NON-CONFORMING PRODUCT(S) AT SELLER'S SOLE OPTION. THERE IS NO OBLIGATION TO REPAIR, REPLACE OR REFUND FOR PRODUCTS AS THE RESULT OF (I) ACCIDENT, DISASTER OR EVENT OF FORCE MAJEURE, (II) MISUSE, FAULT OR NEGLIGENCE OF OR BY BUYER, (III) USE OF THE PRODUCTS IN A MANNER FOR WHICH THEY WERE NOT DESIGNED, OR (IV) IMPROPER STORAGE AND HANDLING OF THE PRODUCTS. Unless otherwise expressly stated on the Product or in the documentation accompanying the Product, the Product is intended for research only and is not to be used for any other purpose, including without limitation, unauthorized commercial uses, in vitro diagnostic uses, ex vivo or in vivo therapeutic uses, or any type of consumption by or application to human or animals.