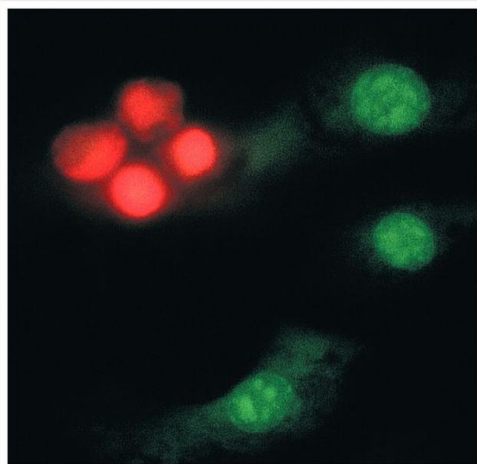


# Dinitrophenyl-KLH Polyclonal Antibody

Product Details	
Size	500 µL
Species Reactivity	Chemical
Published Species	Chemical
Host/Isotype	Rabbit / IgG
Class	Polyclonal
Type	Antibody
Conjugate	Unconjugated
Immunogen	Dinitrophenyl-KLH
Form	Liquid
Concentration	2 mg/mL
Purification	purified
Storage buffer	PBS, pH 7.2
Contains	5mM sodium azide
Storage conditions	4° C
RRID	AB_221552

Applications	Tested Dilution	Publications
Western Blot (WB)	-	15 Publications
Immunohistochemistry (IHC)	Assay-dependent	9 Publications
Immunohistochemistry (Frozen) (IHC (F))	-	5 Publications
Immunocytochemistry (ICC/IF)	Assay-dependent	14 Publications
Flow Cytometry (Flow)	Assay-dependent	1 Publication
ELISA (ELISA)	-	3 Publications
Immunoprecipitation (IP)	-	1 Publication
Neutralization (Neu)	-	4 Publications
Cytotoxicity Assay (CT)	-	1 Publication
Miscellaneous PubMed (Misc)	-	6 Publications

## Product Images For Dinitrophenyl-KLH Polyclonal Antibody

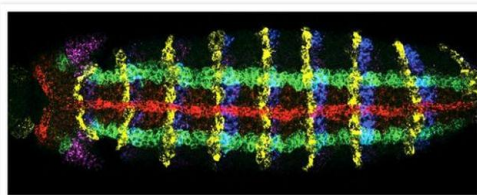


### Dinitrophenyl-KLH Antibody (A-6430) in ICC/IF

A mixed population of trinitrophenyl-sensitized and nonsensitized bovine pulmonary artery endothelial cells that have been probed with anti-dinitrophenyl-KLH antibody (Product # A-6430), incubated with rabbit complement and then stained using the LIVE/DEAD® Reduced Biohazard Viability/Cytotoxicity Kit #1 (Product # L-7013). With this kit, the membrane-permeant SYTO® 10 dye labels the nucleic acids of live cells with green fluorescence, and the membrane-impermeant DEAD Red™ dye labels nucleic acids of membrane-compromised cells with red fluorescence. Subsequent aldehyde-based fixation inactivates pathogens without distorting the original staining pattern. This multiple-exposure image was acquired with bandpass optical filters appropriate for FITC and Texas Red® dyes.

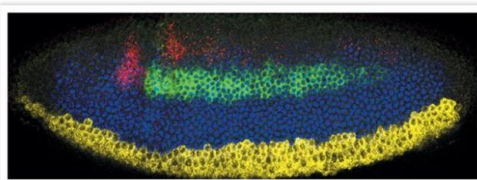
### Dinitrophenyl-KLH Antibody (A-6430) in IHC

Simultaneous detection of expression of five genes in a whole-mount *Drosophila* embryo by fluorescence in situ hybridization (FISH) with five RNA probes. Red: *sog* labeled using aminoallyl UTP (Product # A21663, A32765) and Alexa Fluor® 647 succinimidyl ester (Product # A-20006, A20106). Green: *ind* labeled with DNP, followed by rabbit anti-dinitrophenyl-KLH IgG antibody (Product # A-6430) pre-labeled with the Zenon® Alexa Fluor® 555 Rabbit IgG Labeling Kit (Product # Z-25305). Blue: *en* labeled with biotin and detected with HRP-streptavidin and Alexa Fluor® 405 tyramide (TSA™ Kit 39, Product # T30952). Yellow: *wg* labeled with digoxigenin and detected with sheep anti-digoxigenin IgG antibody and Alexa Fluor® 594 Donkey Anti-Sheep IgG antibody (Product # A-11016). Magenta: *msh* labeled with fluorescein and detected with mouse anti-fluorescein/Oregon Green® IgG antibody (Product # A-6421) and Alexa Fluor® 488 Goat Anti-Mouse IgG antibody (Product # A-11001, A11029). Image contributed by Dave Kosman and Ethan Bier, University of California, San Diego.



### Dinitrophenyl-KLH Antibody (A-6430) in IHC

Four-color fluorescence in situ hybridization on a *Drosophila* embryo. A late blastoderm stage (nuclear cycle 14) embryo was probed with four different RNA probes. Blue: *sog* labeled with DNP, followed by a rabbit anti-dinitrophenyl-KLH IgG antibody (Product # A-6430) detected with an Alexa Fluor® 647 chicken anti-rabbit IgG antibody (Product # A-21443). Green: *ind* labeled with biotin, followed by streptavidin HRP and Alexa Fluor® 350 tyramide (TSA Kit #27, Product # T-20937). Red: *msh* labeled with digoxigenin followed by sheep anti-digoxigenin antibody detected with an Alexa Fluor® 488 donkey anti-sheep IgG antibody (Product # A-11015). Yellow: *sna* labeled with FITC followed by mouse anti-FITC antibody detected with an Alexa Fluor® 555 goat anti-mouse IgG antibody (Product # A-21424). Image contributed by Dave Kosman and Ethan Bier, University of California, San Diego.



View more figures on [thermofisher.com](http://thermofisher.com)

## Western Blot (15)

Frontiers in veterinary science

### Identification of Protein Carbonyls (PCOs) in Canine Serum by Western Blot Technique and Preliminary Evaluation of PCO Concentration in Dogs With Systemic Inflammation.

"A-6430 was used in Western Blotting to assess whether Protein Carbonyls in canine serum may be detected by antibody-based methods such as Western Blotting (WB), and to preliminarily investigate the possible utility of this marker in dogs with inflammation."

Authors: Ruggeroni B,Colombo G,Paltrinieri S

**Species**  
Chemical

**Dilution**  
1:40000

**Year**  
2020

Redox biology

### Impact of carbonylation on glutathione peroxidase-1 activity in human hyperglycemic endothelial cells.

"Published figure using Dinitrophenyl-KLH polyclonal antibody (Product # A-6430) in Immunofluorescence"

Authors: Sultan CS,Saackel A,Stank A,Fleming T,Fedorova M,Hoffmann R,Wade RC,Hecker M,Wagner AH

**Species**  
Chemical

**Dilution**  
1:200

**Year**  
2018

[View more WB references on thermofisher.com](#)

## Immunohistochemistry (9)

Redox biology

### Impact of carbonylation on glutathione peroxidase-1 activity in human hyperglycemic endothelial cells.

"Published figure using Dinitrophenyl-KLH polyclonal antibody (Product # A-6430) in Immunofluorescence"

Authors: Sultan CS,Saackel A,Stank A,Fleming T,Fedorova M,Hoffmann R,Wade RC,Hecker M,Wagner AH

**Species**  
Chemical

**Dilution**  
1:200

**Year**  
2018

Developmental cell

### Tumor-Suppressor Inactivation of GDF11 Occurs by Precursor Sequestration in Triple-Negative Breast Cancer.

"A-6430 was used in Immunohistochemistry-immunofluorescence to study the tumour-suppressive mode of action of growth-differentiation factor 11, and an unusual mechanism of its inactivation in triple negative breast cancer."

Authors: Bajikar SS,Wang CC,Borten MA,Pereira EJ,Atkins KA,Janes KA

**Species**  
Chemical

**Dilution**  
1:1,000

**Year**  
2017

[View more IHC references on thermofisher.com](#)

## More applications with references on thermofisher.com

IHC (F) (5)

ICC/IF (14)

Flow (1)

ELISA (3)

IP (1)

Neu (4)

CT (1)

Misc (6)

For Research Use Only. Not for use in diagnostic procedures. Not for resale without express authorization. Products are warranted to operate or perform substantially in conformance with published Product specifications in effect at the time of sale, as set forth in the Production documentation, specifications and/or accompanying package inserts ("Documentation"). No claim of suitability for use in applications regulated by FDA is made. The warranty provided herein is valid only when used by properly trained individuals. Unless otherwise stated in the Documentation, this warranty is limited to one year from date of shipment when the Product is subjected to normal, proper and intended usage. This warranty does not extend to anyone other than the Buyer. Any model or sample furnished to Buyer is merely illustrative of the general type and quality of goods and does not represent that any Product will conform to such model or sample. NO OTHER WARRANTIES, EXPRESS OR IMPLIED, ARE GRANTED INCLUDING WITHOUT LIMITATION, IMPLIED WARRANTIES OF MERCHANTABILITY, FITNESS FOR ANY PARTICULAR PURPOSE, OR NON INFRINGEMENT. BUYER'S EXCLUSIVE REMEDY FOR NON-CONFORMING PRODUCTS DURING THE WARRANTY PERIOD IS LIMITED TO REPAIR, REPLACEMENT OF OR REFUND FOR THE NON-CONFORMING PRODUCT(S) AT SELLER'S SOLE OPTION. THERE IS NO OBLIGATION TO REPAIR, REPLACE OR REFUND FOR PRODUCTS AS THE RESULT OF (I) ACCIDENT, DISASTER OR EVENT OF FORCE MAJEURE, (II) MISUSE, FAULT OR NEGLIGENCE OF OR BY BUYER, (III) USE OF THE PRODUCTS IN A MANNER FOR WHICH THEY WERE NOT DESIGNED, OR (IV) IMPROPER STORAGE AND HANDLING OF THE PRODUCTS. Unless otherwise expressly stated on the Product or in the documentation accompanying the Product, the Product is intended for research only and is not to be used for any other purpose, including without limitation, unauthorized commercial uses, in vitro diagnostic uses, ex vivo or in vivo therapeutic uses, or any type of consumption by or application to human or animals.