

# GFP Polyclonal Antibody

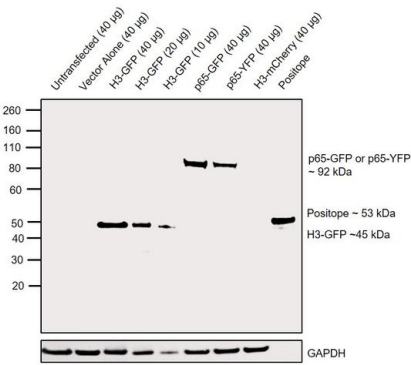
Product Details	
Size	100 µL
Species Reactivity	Tag
Published Species	Tag
Host/Isotype	Rabbit / IgG
Class	Polyclonal
Type	Antibody
Conjugate	Unconjugated
Immunogen	The GFP was isolated directly from the jellyfish Aequorea victoria.
Form	Liquid
Concentration	Conc. Not Determined
Storage buffer	whole serum
Contains	0.01% thimerosal
Storage conditions	-20°C
RRID	AB_221570

Applications	Tested Dilution	Publications
Western Blot (WB)	1:7500	152 Publications
Immunohistochemistry (IHC)	Assay-dependent	307 Publications
Immunohistochemistry (Paraffin) (IHC (P))	-	14 Publications
Immunohistochemistry (Frozen) (IHC (F))	-	23 Publications
Immunohistochemistry - Free Floating (IHC (Free))	-	13 Publications
Immunocytochemistry (ICC/IF)	Assay-dependent	129 Publications
Flow Cytometry (Flow)	-	6 Publications
ELISA (ELISA)	Assay-dependent	1 Publication
Immunoprecipitation (IP)	-	29 Publications
ChIP assay (ChIP)	-	11 Publications
in situ PLA (PLA)	-	2 Publications
Immunomicroscopy (IM)	-	1 Publication
Gel Shift (GS)	-	1 Publication
RNA Immunoprecipitation (RIP)	-	1 Publication
Miscellaneous PubMed (Misc)	-	88 Publications

Product Images For GFP Polyclonal Antibody

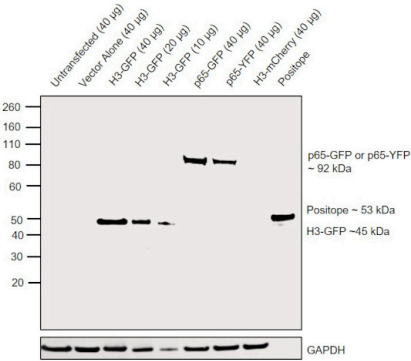
GFP Antibody (A-6455) in WB

Western Blot was performed using Anti-GFP Polyclonal Antibody (Product # A-6455) by loading whole cell extracts of untransfected and transiently transfected HEK-293E lysates: untransfected, 40 µg (Lane 1), empty vector control, 40 µg (Lane 2), H3-GFP, 40 µg (Lane 3), H3-GFP, 20 µg (Lane 4), H3-GFP, 10 µg (Lane 5), p65-GFP, 40 µg (Lane 6), His-p65-YFP, 40 µg (Lane 7), H3-mCherry, 40 µg (Lane 8) and 25 ng Positope (Lane 9) were electrophoresed using NuPAGE™ 4-12% Bis-Tris Protein Gel (Product # NP0322BOX). Resolved proteins were then transferred onto a nitrocellulose membrane (Product # IB23001) by iBlot® 2 Dry Blotting System (Product # IB21001). A ~45 kDa band of H3-GFP and a ~92 kDa band of p65-GFP were observed in transfected lysates on probing with primary antibody (1:7500 dilution) and detected by chemiluminescence with Goat anti-Rabbit IgG (Heavy Chain) Superclonal™ Secondary Antibody, HRP (Product # A27036, 1:4000 dilution) using the iBright FL 1500 (Product # A44241). Positope (Product # R90050) is a 53 kDa recombinant protein consisting multiple epitope tags, which has been used as a positive control for GFP detection. This product also detects Yellow Fluorescent Protein (YFP), a variant of GFP as observed in Lane 7. No cross-reactivity was seen with mCherry (RFP family) expressing lysate.



GFP Antibody (A-6455)

Antibody specificity was demonstrated by detection of different targets fused to GFP tag in transiently transfected lysates tested. Relative detection of GFP tag was observed across different proteins fused with GFP in H3-GFP (Lane 3-5) and p65-GFP (Lane 6). GFP-variant, YFP is also being detected in His-p65-YFP lysate (Lane 7), using Anti-GFP Polyclonal Antibody (Product # A-6455) in Western Blot. {RE}



Western Blot (152)

Brain communications	Year 2023
<b>Presynaptic accumulation of -synuclein causes synaptopathy and progressive neurodegeneration in <i>Drosophila</i>.</b>	Species Tag
"A-6455 was used in Western Blot, Immunohistochemistry to investigate the cascade of pathological events underlying - syn accumulation and toxicity in a Drosophila model of synucleinopathy by employing a combination of histological, biochemical, behavioural and electrophysiological assays."	Dilution 1:1000
Authors: Bridi JC,Bereczki E,Smith SK,Poças GM,Kottler B,Domingos PM,Elliott CJ,Aarsland D,Hirth F	
The Journal of biological chemistry	Year 2023
<b>Arginine-rich C9ORF72 ALS proteins stall ribosomes in a manner distinct from a canonical ribosome-associated quality control substrate.</b>	Species Tag
"A-6455 was used in Western Blotting to find that genes regulating stalling on polyadenosine mRNA coding for poly-Lys, a canonical RQC substrate, act differently in the case of arginine-rich DPRs."	Dilution 1:5000
Authors: Kriachkov V,Ormsby AR,Kusnadi EP,McWilliam HEG,Mintern JD,Amarasinghe SL,Ritchie ME,Furic L,Hatters DM	

[View more WB references on thermofisher.com](#)

Immunohistochemistry (307)

Frontiers in cellular neuroscience	Year 2023
<b>Parvalbumin-Deficiency Accelerates the Age-Dependent ROS Production in Pvalb Neurons <i>in vivo</i>: Link to Neurodevelopmental Disorders.</b>	Species Tag
"A-6455 was used in Immunohistochemistry to indicate that the ASD-like phenotype in PV/ mice emerges before the onset of an increase in oxidative stress hinting toward absence/reduction of PV as the main contributor to the behavioral ASD-like phenotype."	Dilution 1:1000
Authors: Janickova L,Schwaller B	
Brain communications	Year 2023
<b>Presynaptic accumulation of -synuclein causes synaptopathy and progressive neurodegeneration in <i>Drosophila</i>.</b>	Species Tag
"A-6455 was used in Western Blot, Immunohistochemistry to investigate the cascade of pathological events underlying - syn accumulation and toxicity in a Drosophila model of synucleinopathy by employing a combination of histological, biochemical, behavioural and electrophysiological assays."	Dilution 1:1000
Authors: Bridi JC,Bereczki E,Smith SK,Poças GM,Kottler B,Domingos PM,Elliott CJ,Aarsland D,Hirth F	

[View more IHC references on thermofisher.com](#)

More applications with references on thermofisher.com

- IHC (P) (14)
- IHC (F) (23)
- IHC (Free) (13)
- ICC/IF (129)
- Flow (6)
- ELISA (1)
- IP (29)
- ChIP (11)
- PLA (2)
- IM (1)
- GS (1)
- RIP (1)
- Misc (88)

For Research Use Only. Not for use in diagnostic procedures. Not for resale without express authorization. Products are warranted to operate or perform substantially in conformance with published Product specifications in effect at the time of sale, as set forth in the Production documentation, specifications and/or accompanying package inserts ("Documentation"). No claim of suitability for use in applications regulated by FDA is made. The warranty provided herein is valid only when used by properly trained individuals. Unless otherwise stated in the Documentation, this warranty is limited to one year from date of shipment when the Product is subjected to normal, proper and intended usage. This warranty does not extend to anyone other than the Buyer. Any model or sample furnished to Buyer is merely illustrative of the general type and quality of goods and does not represent that any Product will conform to such model or sample. NO OTHER WARRANTIES, EXPRESS OR IMPLIED, ARE GRANTED INCLUDING WITHOUT LIMITATION, IMPLIED WARRANTIES OF MERCHANTABILITY, FITNESS FOR ANY PARTICULAR PURPOSE, OR NON-INFRINGEMENT. BUYER'S EXCLUSIVE REMEDY FOR NON-CONFORMING PRODUCTS DURING THE WARRANTY PERIOD IS LIMITED TO REPAIR, REPLACEMENT OF OR REFUND FOR THE NON-CONFORMING PRODUCT(S) AT SELLER'S SOLE OPTION. THERE IS NO OBLIGATION TO REPAIR, REPLACE OR REFUND FOR PRODUCTS AS THE RESULT OF (i) ACCIDENT, DISASTER OR EVENT OF FORCE MAJEURE, (ii) MISUSE, FAULT OR NEGLIGENCE OF OR BY BUYER, (iii) USE OF THE PRODUCTS IN A MANNER FOR WHICH THEY WERE NOT DESIGNED, OR (iv) IMPROPER STORAGE AND HANDLING OF THE PRODUCTS. Unless otherwise expressly stated on the Product or in the documentation accompanying the Product, the Product is intended for research only and is not to be used for any other purpose, including without limitation, unauthorized commercial uses, in vitro diagnostic uses, ex vivo or in vivo therapeutic uses, or any type of consumption by or application to human or animals.