

# alpha Tubulin Monoclonal Antibody (236-10501)

## Product Details

|                    |  |
|--------------------|--|
| Size               | 50 µg  |
| Species Reactivity | Bovine, Human, Mouse   |
| Published Species  | Rat, Fruit fly, Non-human primate, Bovine, Hamster, Human, Mouse |
| Host/Isotope       | Mouse / IgG1   |
| Class              | Monoclonal   |
| Type               | Antibody   |
| Clone              | 236-10501  |
| Conjugate          | Unconjugated   |
| Immunogen          | Bovine Alpha-Tubulin.  |
| Form               | Lyophilized  |
| Purification       | purified   |
| Contains           | no preservative  |
| Storage Conditions | -20°C  |
| RRID               | AB_2534135   |

| Applications                              | Tested | Dilution      | Published       |
|---|--------|---------------|-----------------|
| Western Blot (WB)                         | ✓      | 1:1000-1:5000 | 33 Publications |
| Immunofluorescence (IF)                   | ✓      | 1:100-1:500   | 14 Publications |
| Immunocytochemistry (ICC)                 | ✓      | 1:100-1:500   | 40 Publications |
| Immunohistochemistry (IHC)                | -      | 1:100         | 8 Publications  |
| Immunohistochemistry (Frozen) (IHC (F))   | -      | 1:250         | 2 Publications  |
| Miscellaneous PubMed (MISC)               | -      |               | 14 Publications |
| Flow Cytometry (Flow)                     | -      | 1:10          | 1 Publication   |
| Immunohistochemistry (Paraffin) (IHC (P)) | ✓      | 1:20-1:200    |                 |

## Product Specific Information

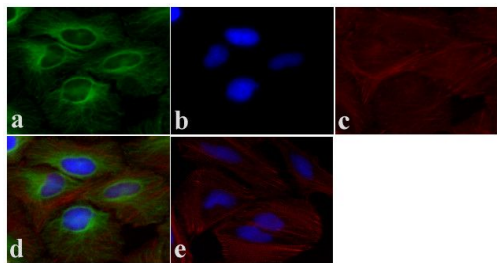
The anti-bovine alpha-tubulin antibody can be used with secondary detection techniques to visualize microtubules in fixed cells and in fixed or frozen tissue sections of various species. In addition, this antibody can be used to detect tubulin by ELISA and immunoblot, for the screening of expression libraries and, since it recognizes amino acids 65-97 of the N-terminal structural domain, as a probe for the N-terminal domain of alpha-tubulin.

We have found that this highly specific antibody can be used at much lower concentrations than anti-tubulin antibodies available from other suppliers. For immunocytochemistry applications, we recommend using an initial concentration of 1 µg/mL or less.

## Product Images For alpha Tubulin Monoclonal Antibody (236-10501)

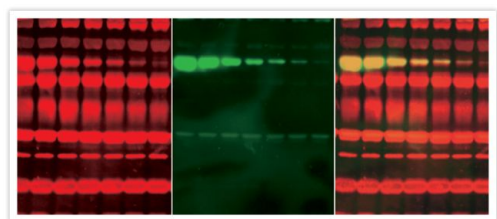
### alpha Tubulin Antibody (A11126) in IF

Immunofluorescent analysis of Alpha-Tubulin was done on 70% confluent log phase HeLa cells. The cells were fixed with 4% paraformaldehyde for 15 minutes, permeabilized with 0.25% Triton™ X-100 for 10 minutes, and blocked with 5% BSA for 1 hour at room temperature. The cells were labeled with Alpha-Tubulin Mouse monoclonal Antibody (Product # A11126) at 1 µg/mL in 1% BSA and incubated for 3 hours at room temperature and then labeled with Alexa Fluor 488 Rabbit Anti-Mouse IgG Secondary Antibody (Product # A-11059) at a dilution of 1:400 for 30 minutes at room temperature (Panel a: green). Nuclei (Panel b: blue) were stained with SlowFade® Gold Antifade Mountant DAPI (Product # S36938). F-actin (Panel c: red) was stained with Alexa Fluor 594 Phalloidin (Product # A12381). Panel d is a merged image showing cytoplasmic localization. Panel e shows no primary antibody control. The images were captured at 20X magnification.



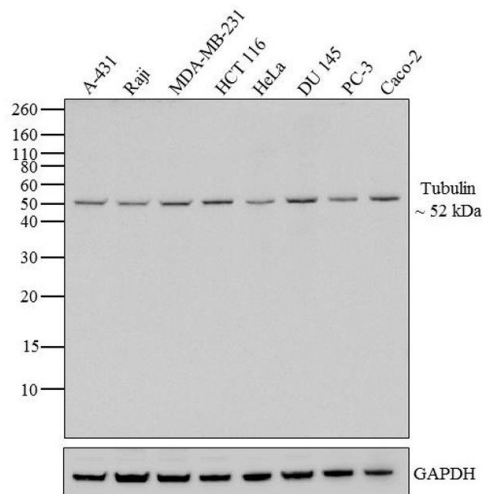
### alpha Tubulin Antibody (A11126) in IF

Protein detection with the DyeChrome™ Western Blot Stain Kit #4 (Product # D21884). Samples of protein molecular weight standards (Product # P-6649) containing decreasing amounts of a-tubulin were run on an SDS-polyacrylamide gel and blotted onto a PVDF membrane. After electrophoresis, the blot was stained with BODIPY® TR-X, succinimidyl ester (red signal), to detect total protein. After staining, the blot was incubated with a mouse monoclonal anti-a-tubulin antibody (Product # A11126), followed by an alkaline phosphatase conjugate of goat anti-mouse IgG antibody, which is included in the kit. Finally, the blot was stained with ELF® 39 phosphate (green signal) to detect the alkaline phosphatase enzyme. The signal was visualized under UV epi-illumination. The two fluorescent signals were captured separately, using the DyeChrome™ Red/Green Photographic Filter Set (Product # D24771), and the two resulting digital images were overlaid using Adobe Photoshop software.



### alpha Tubulin Antibody (A11126) in WB

Western blot analysis of alpha-Tubulin was performed by loading 20 µg of A431 (lane1), Raji (lane2), MDA-MB-231 (lane3), HCT 116 (lane4), HeLa (lane5), DU 145 (lane6), PC-3 (lane7) and Caco-2 (lane8) cell lysate using Novex®NuPAGE® 12 % Bis-Tris gel (Product # NP0341BOX), XCell SureLock Electrophoresis System (Product # EI0002), Novex® Sharp Pre-Stained Protein Standard (LC5800), and iBlot® Dry Blotting System (IB21001). Proteins were transferred to a nitrocellulose membrane and blocked with 5% skim milk at 4°C overnight. alpha-Tubulin was detected at ~ 52 kDa using alpha-Tubulin Mouse Monoclonal Antibody (Product # A11126) at 1:3000 dilution in 5% skim milk for 3 hour at room temperature on a rocking platform. Goat Anti-Mouse - HRP Secondary Antibody (Product # 62-6520) at 1:4000 dilution was used and chemiluminescent detection was performed using Pierce™ ECL Western Blotting Substrate (Product # 32106).



View more figures on [thermofisher.com](https://www.thermofisher.com)

## Western Blot (33)

### Cell reports

#### Primary Cilia Mediate Diverse Kinase Inhibitor Resistance Mechanisms in Cancer.

"Published figure using alpha Tubulin monoclonal antibody (Product # A11126) in Western Blot"

Authors: Jenks AD, Vyse S, Wong JP, Kostaras E, Keller D, Burgoyne T, Shoemark A, Tsalikis A, de la Roche M, Michaelis M, Cinatl J, Huang PH, Tanos BE

**Species**  
Not Applicable

**Dilution**  
1:1000

**Year**  
2018

### American journal of human genetics

#### Variants in EXOSC9 Disrupt the RNA Exosome and Result in Cerebellar Atrophy with Spinal Motor Neuronopathy.

Authors: Burns DT, Donkervoort S, Müller JS, Knierim E, Bharucha-Goebel D, Faqeih EA, Bell SK, AlFaifi AY, Monies D, Millan F, Retterer K, Dyack S, MacKay S, Morales-Gonzalez S, Giunta M, Munro B, Hudson G, Scavina M, Baker L, Massini TC, Lek M, Hu Y, Ezzo D, AIKuraya FS, Kang PB, Griffin H, Foley AR, Schuelke M, Horvath R, Bönnemann CG

**Species**  
Human

**Dilution**  
Not Cited

**Year**  
2018

[View more WB references on thermofisher.com](#)

## Immunofluorescence (14)

### Scientific reports

#### Inhibition of AURKA kinase activity suppresses collective invasion in a microfluidic cell culture platform.

"Published figure using alpha Tubulin monoclonal antibody (Product # A11126) in Immunofluorescence"

Authors: Xia JL, Fan WJ, Zheng FM, Zhang WW, Xie JJ, Yang MY, Kamran M, Wang P, Teng HM, Wang CL, Liu Q

**Species**  
Human

**Dilution**  
Not Cited

**Year**  
2017

### Scientific reports

#### Resin embedded multicycle imaging (REMI): a tool to evaluate protein domains.

"Published figure using alpha Tubulin monoclonal antibody (Product # A11126) in Immunofluorescence"

Authors: Busse BL, Bezrukov L, Blank PS, Zimmerberg J

**Species**  
Mouse

**Dilution**  
Not Cited

**Year**  
2016

[View more IF references on thermofisher.com](#)

## More applications with references on thermofisher.com

ICC (40)

IHC (8)

IHC (F) (2)

MISC (14)

Flow (1)

For Research Use Only. Not for use in diagnostic procedures. Not for resale without express authorization. Products are warranted to operate or perform substantially in conformance with published Product specifications in effect at the time of sale, as set forth in the Production documentation, specifications and/or accompanying package inserts ("Documentation"). No claim of suitability for use in applications regulated by FDA is made. The warranty provided herein is valid only when used by properly trained individuals. Unless otherwise stated in the Documentation, this warranty is limited to one year from date of shipment when the Product is subjected to normal, proper and intended usage. This warranty does not extend to anyone other than the Buyer. Any model or sample furnished to Buyer is merely illustrative of the general type and quality of goods and does not represent that any Product will conform to such model or sample. NO OTHER WARRANTIES, EXPRESS OR IMPLIED, ARE GRANTED INCLUDING WITHOUT LIMITATION, IMPLIED WARRANTIES OF MERCHANTABILITY, FITNESS FOR ANY PARTICULAR PURPOSE, OR NON INFRINGEMENT. BUYER'S EXCLUSIVE REMEDY FOR NON-CONFORMING PRODUCTS DURING THE WARRANTY PERIOD IS LIMITED TO REPAIR, REPLACEMENT OF OR REFUND FOR THE NON-CONFORMING PRODUCT(S) AT SELLER'S SOLE OPTION. THERE IS NO OBLIGATION TO REPAIR, REPLACE OR REFUND FOR PRODUCTS AS THE RESULT OF (I) ACCIDENT, DISASTER OR EVENT OF FORCE MAJEURE, (II) MISUSE, FAULT OR NEGLIGENCE OF OR BY BUYER, (III) USE OF THE PRODUCTS IN A MANNER FOR WHICH THEY WERE NOT DESIGNED, OR (IV) IMPROPER STORAGE AND HANDLING OF THE PRODUCTS. Unless otherwise expressly stated on the Product or in the documentation accompanying the Product, the Product is intended for research only and is not to be used for any other purpose, including without limitation, unauthorized commercial uses, in vitro diagnostic uses, ex vivo or in vivo therapeutic uses, or any type of consumption by or application to human or animals.