

Bovine Serum Albumin Polyclonal Antibody

Product Details

Size	500 µL
Species Reactivity	Bovine
Published Species	Rabbit, Baboon, Non-human primate, Bovine, Human, Mouse
Host/Isotype	Rabbit / IgG
Class	Polyclonal
Type	Antibody
Conjugate	Unconjugated
Immunogen	Bovine Serum Albumin
Form	Liquid
Concentration	2 mg/mL
Purification	IgG fraction
Storage buffer	PBS, pH 7.2
Contains	5mM sodium azide
Storage conditions	4° C
RRID	AB_2534139

Applications	Tested Dilution	Publications
Western Blot (WB)	1:1,000	10 Publications
Immunohistochemistry (Paraffin) (IHC (P))	Assay-dependent	-
Immunocytochemistry (ICC/IF)	Assay-dependent	3 Publications
Flow Cytometry (Flow)	-	1 Publication
ELISA (ELISA)	Assay-dependent	1 Publication
Immunoprecipitation (IP)	Assay-dependent	1 Publication
Functional Assay (FN)	-	1 Publication
Miscellaneous PubMed (Misc)	-	2 Publications

Product Specific Information

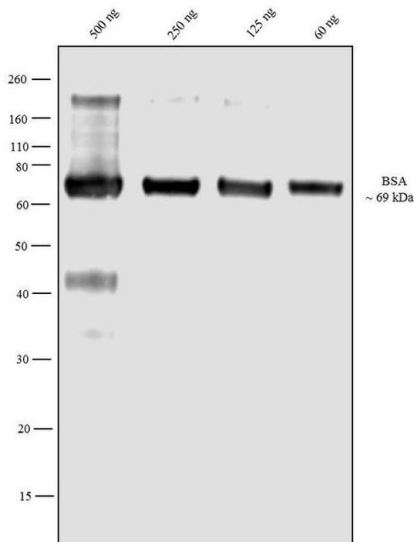
Anti-bovine serum albumin (anti-BSA) antibody is a highly purified rabbit IgG fraction that can be used for the detection of BSA in tracer studies or in protease assays. This antibody demonstrates high specificity for BSA and little or no crossreactivity to other serum proteins. Cat. No. A11133 can be used in enzyme and fluorescence immunoassays and blots, cell or tissue immunostaining, and as a precipitating antibody or as an immuno-adsorbant when attached to solid supports. For detection of this rabbit antibody, we offer a variety of second-step reagents labeled with biotin or with a wide range of fluorophores.

Because staining protocols vary with application, the appropriate dilution of antibody should be determined empirically. We suggest using serial dilutions from about 1:100 to 1:1,000 to determine the optimal conditions for your experiments.

Product Images For Bovine Serum Albumin Polyclonal Antibody

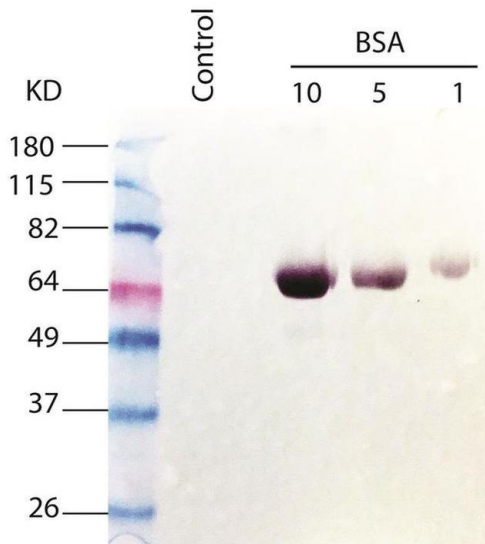
Bovine Serum Albumin Antibody (A11133) in WB

Western blot analysis was performed by loading 500 ng (Lane 1), 250 ng (Lane 2), 125 ng (Lane 3) and 60 ng (Lane 4) of BSA. The blot was probed with Anti-Bovine Serum Albumin Rabbit Polyclonal Antibody (Product # A11133, 1:1000 dilution) and detected by chemiluminescence using Goat anti-Rabbit IgG (Heavy Chain) Superclonal™ Secondary Antibody, HRP conjugate (Product # A27036, 0.25 µg/mL, 1:4000 dilution). A 69 kDa band corresponding to Bovine Serum Albumin was observed. Known quantity of protein samples were electrophoresed using Novex® NuPAGE® 4-12 % Bis-Tris gel (Product # NP0322BOX), XCell SureLock™ Electrophoresis System (Product # EI0002) and Novex® Sharp Pre-Stained Protein Standard (Product # LC5800). Resolved proteins were then transferred onto a nitrocellulose membrane with iBlot® 2 Dry Blotting System (Product # IB21001). The membrane was probed with the relevant primary and secondary Antibody following blocking with 5 % skimmed milk. Chemiluminescent detection was performed using Pierce™ ECL Western Blotting Substrate (Product # 32106).



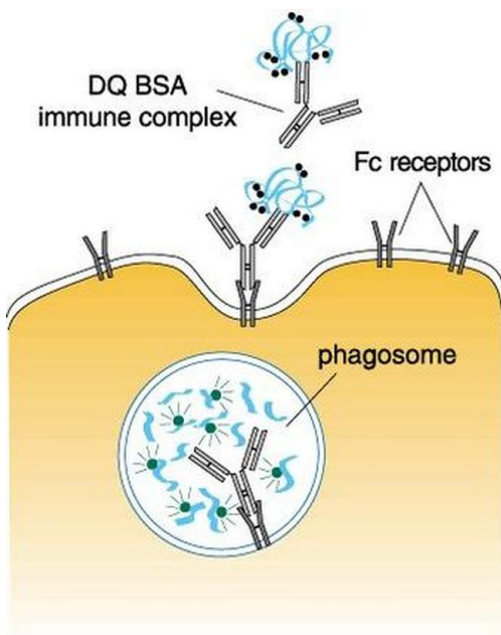
Bovine Serum Albumin Antibody (A11133) in WB

Western blot analysis of BSA was performed by loading an unrelated protein (lane 1), 1 µg (lane 2), 5 µg (lane 3) and 10 µg of BSA (lane 4) in reducing sample buffer and protein ladder onto an SDS-PAGE gel. Proteins were transferred to nitrocellulose membrane. Membrane was blocked in 2% skim milk in PBS. BSA was detected at approximately 69 kDa using a BSA polyclonal antibody (Product # A11133) at a dilution of 1:1000 in 1% skim milk in PBST overnight at 4 degrees, followed by a 1:2000 dilution of HRP-conjugated goat anti-rabbit IgG antibody at room temperature for one hour. HRP color development substrate was used. Data courtesy of Antibody Data Exchange Program.



Bovine Serum Albumin Antibody (A11133)

Immune complex of DQ™ BSA conjugate (Product # D12050, D12051) with an anti-bovine serum albumin (BSA) antibody (Product # A11133) for the fluorescent detection of the Fc receptor-mediated phagocytosis pathway. The DQ™ BSA is a derivative of BSA that is labeled to such a high degree with either the green-fluorescent BODIPY® FL or red-fluorescent BODIPY® TR-X dye that the fluorescence is self-quenched. Upon binding to an Fc receptor, the nonfluorescent immune complex is internalized and the protein is subsequently hydrolyzed to fluorescent peptides within the phagosome.



View more figures on thermofisher.com

19 References

Western Blot (10)

Frontiers in molecular neuroscience	Year 2022
SUMOylation of the Kv4.2 Ternary Complex Increases Surface Expression and Current Amplitude by Reducing Internalization in HEK 293 Cells.	Species Human
"A11133 was used in Western Blot to show that SUMOylation of Kv4.2 at K579 regulates TC internalization most likely by promoting channel recycling."	Dilution 1:20000
Authors: Welch MA,Jansen LR,Baro DJ	

Scientific reports	Year 2021
Nanostructure of bioactive glass affects bone cell attachment via protein restructuring upon adsorption.	Species Mouse
"A11133 was used in Western Blot to provide new insight into the interaction of cells with the scaffolds' interfacial layer, which is vital for the continued development of engineered tissue scaffolds."	Dilution 1:5000
Authors: Thamma U,Kowal TJ,Falk MM,Jain H	

View more WB references on thermofisher.com

Immunocytochemistry (3)

Journal of tissue engineering and regenerative medicine	Year 2016
Human dental pulp stem cells derived from cryopreserved dental pulp tissues of vital extracted teeth with disease demonstrate hepatic-like differentiation.	
"Published figure using Bovine Serum Albumin polyclonal antibody (Product # A11133) in Immunofluorescence"	
Authors: Chen YK,Huang AH,Chan AW,Lin LM	

The Journal of biological chemistry	Year 2013
CR1-mediated ATP release by human red blood cells promotes CR1 clustering and modulates the immune transfer process.	
"Published figure using Bovine Serum Albumin polyclonal antibody (Product # A11133) in Immunofluorescence"	
Authors: Melhorn MI,Brodsky AS,Estanislau J,Khoory JA,Illigens B,Hamachi I,Kurishita Y,Fraser AD,Nicholson-Weller A,Dolmatova E,Duffy HS,Ghiran IC	

View more ICC/IF references on thermofisher.com

More applications with references on thermofisher.com

- Flow (1)
- ELISA (1)
- IP (1)
- FN (1)
- Misc (2)

For Research Use Only. Not for use in diagnostic procedures. Not for resale without express authorization. Products are warranted to operate or perform substantially in conformance with published Product specifications in effect at the time of sale, as set forth in the Production documentation, specifications and/or accompanying package inserts ("Documentation"). No claim of suitability for use in applications regulated by FDA is made. The warranty provided herein is valid only when used by properly trained individuals. Unless otherwise stated in the Documentation, this warranty is limited to one year from date of shipment when the Product is subjected to normal, proper and intended usage. This warranty does not extend to anyone other than the Buyer. Any model or sample furnished to Buyer is merely illustrative of the general type and quality of goods and does not represent that any Product will conform to such model or sample. NO OTHER WARRANTIES, EXPRESS OR IMPLIED, ARE GRANTED INCLUDING WITHOUT LIMITATION, IMPLIED WARRANTIES OF MERCHANTABILITY, FITNESS FOR ANY PARTICULAR PURPOSE, OR NON-INFRINGEMENT. BUYER'S EXCLUSIVE REMEDY FOR NON-CONFORMING PRODUCTS DURING THE WARRANTY PERIOD IS LIMITED TO REPAIR, REPLACEMENT OF OR REFUND FOR THE NON-CONFORMING PRODUCT(S) AT SELLER'S SOLE OPTION. THERE IS NO OBLIGATION TO REPAIR, REPLACE OR REFUND FOR PRODUCTS AS THE RESULT OF (i) ACCIDENT, DISASTER OR EVENT OF FORCE MAJEURE, (ii) MISUSE, FAULT OR NEGLIGENCE OF OR BY BUYER, (iii) USE OF THE PRODUCTS IN A MANNER FOR WHICH THEY WERE NOT DESIGNED, OR (iv) IMPROPER STORAGE AND HANDLING OF THE PRODUCTS. Unless otherwise expressly stated on the Product or in the documentation accompanying the Product, the Product is intended for research only and is not to be used for any other purpose, including without limitation, unauthorized commercial uses, in vitro diagnostic uses, ex vivo or in vivo therapeutic uses, or any type of consumption by or application to human or animals.