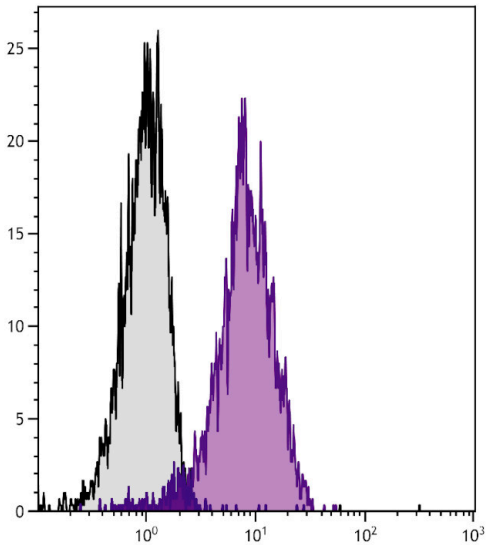


ICAM-2 Monoclonal Antibody (3C4), Alexa Fluor™ 647

Product Details	
Size	100 µg
Species Reactivity	Mouse
Published Species	Mouse
Host/Isotype	Rat / IgG2a, kappa
Class	Monoclonal
Type	Antibody
Clone	3C4
Conjugate	Alexa Fluor™ 647
Excitation/Emission Max	650/671 nm
Immunogen	Mouse CD102 from COS cells transfected with mouse ICAM-2 cDNA and BW5147 AKR/J mouse thymoma cell line
Form	Liquid
Concentration	0.5 mg/mL
Purification	purified
Storage buffer	PBS
Contains	<0.1% sodium azide
Storage conditions	4° C, store in dark
RRID	AB_2534465

Applications	Tested Dilution	Publications
Flow Cytometry (Flow)	0.2 µg/1x10^6 cells	5 Publications

Product Images For ICAM-2 Monoclonal Antibody (3C4), Alexa Fluor™ 647



ICAM-2 Antibody (A15452) in Flow
Flow cytometry analysis of ICAM-2 in BALB/c mouse splenocytes. Cells were stained using ICAM-2 Monoclonal Antibody (3C4), Alexa Fluor™ 647 (Product # A15452).

Flow Cytometry (5)

<p>Nature communications</p> <p>Differential chromatin binding of the lung lineage transcription factor NKX2-1 resolves opposing murine alveolar cell fates in vivo.</p> <p>"A15452 was used in Flow cytometry/Cell sorting to report that the cell-type-specific function of NKX2-1 is attributed to its differential chromatin binding that is acquired or retained during development in coordination with partner transcriptional factors."</p> <p>Authors: Little DR,Lynch AM,Yan Y,Akiyama H,Kimura S,Chen J</p>	<p>Year 2021</p> <p>Species Mouse</p> <p>Dilution 1:250</p>
<p>Disease models & mechanisms</p> <p>Quantitative single-cell interactomes in normal and virus-infected mouse lungs.</p> <p>"A15452 was used in Flow cytometry/Cell sorting to describe a quantitative intuitive algorithm, coupled with an optimized experimental protocol, to construct and compare interactomes as a Control and Sendai virus-infected mouse lungs."</p> <p>Authors: Cain MP,Hernandez BJ,Chen J</p>	<p>Year 2020</p> <p>Species Mouse</p>

View more Flow references on thermofisher.com

More applications with references on thermofisher.com

For Research Use Only. Not for use in diagnostic procedures. Not for resale without express authorization. Products are warranted to operate or perform substantially in conformance with published Product specifications in effect at the time of sale, as set forth in the Production documentation, specifications and/or accompanying package inserts ("Documentation"). No claim of suitability for use in applications regulated by FDA is made. The warranty provided herein is valid only when used by properly trained individuals. Unless otherwise stated in the Documentation, this warranty is limited to one year from date of shipment when the Product is subjected to normal, proper and intended usage. This warranty does not extend to anyone other than the Buyer. Any model or sample furnished to Buyer is merely illustrative of the general type and quality of goods and does not represent that any Product will conform to such model or sample. NO OTHER WARRANTIES, EXPRESS OR IMPLIED, ARE GRANTED INCLUDING WITHOUT LIMITATION, IMPLIED WARRANTIES OF MERCHANTABILITY, FITNESS FOR ANY PARTICULAR PURPOSE, OR NON INFRINGEMENT. BUYER'S EXCLUSIVE REMEDY FOR NON-CONFORMING PRODUCTS DURING THE WARRANTY PERIOD IS LIMITED TO REPAIR, REPLACEMENT OF OR REFUND FOR THE NON-CONFORMING PRODUCT(S) AT SELLER'S SOLE OPTION. THERE IS NO OBLIGATION TO REPAIR, REPLACE OR REFUND FOR PRODUCTS AS THE RESULT OF (i) ACCIDENT, DISASTER OR EVENT OF FORCE MAJEURE, (ii) MISUSE, FAULT OR NEGLIGENCE OF OR BY BUYER, (iii) USE OF THE PRODUCTS IN A MANNER FOR WHICH THEY WERE NOT DESIGNED, OR (iv) IMPROPER STORAGE AND HANDLING OF THE PRODUCTS. Unless otherwise expressly stated on the Product or in the documentation accompanying the Product, the Product is intended for research only and is not to be used for any other purpose, including without limitation, unauthorized commercial uses, in vitro diagnostic uses, ex vivo or in vivo therapeutic uses, or any type of consumption by or application to human or animals.