

alpha Tubulin Monoclonal Antibody (236-10501), Biotin

Product Details	
Size	50 µg
Species Reactivity	Bovine, Human, Mouse
Published Species	Human
Host/Isotype	Mouse / IgG1
Class	Monoclonal
Type	Antibody
Clone	236-10501
Conjugate	Biotin
Immunogen	Bovine Alpha-Tubulin.
Form	Lyophilized
Purification	purified
Contains	no preservative
Storage Conditions	-20°C
RRID	AB_2535843

Applications	Tested Dilution	Publications
Western Blot (WB)	1:1000-1:5000	-
Immunohistochemistry (Paraffin) (IHC (P))	1:10-1:100	-
Immunocytochemistry (ICC/IF)	1.0 µg/mL	3 Publications

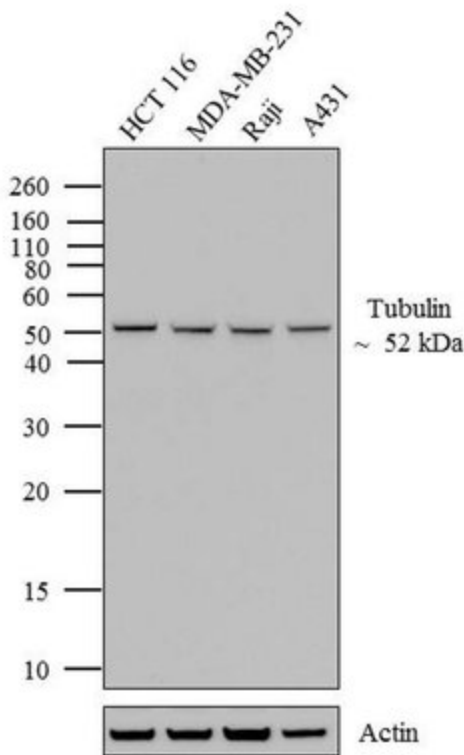
Product Specific Information

Storage and reconstitution: upon receipt, store desiccated at -20°C. To prepare a stock solution, reconstitute in PBS containing 1% BSA and 2mM sodium azide. Reconstituted solutions should remain stable for 6 months when stored at 4°C. For longer storage, aliquot and store at -20°C.

Product Images For alpha Tubulin Monoclonal Antibody (236-10501), Biotin

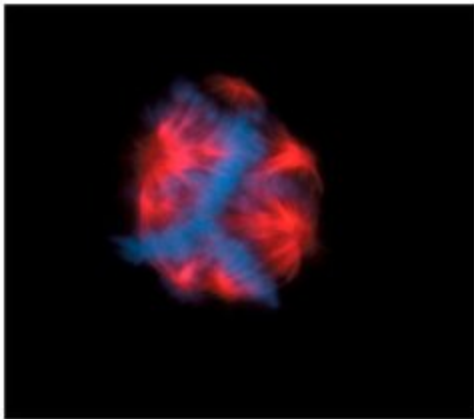
alpha Tubulin Antibody (A21371) in WB

Western blot analysis of alpha-Tubulin was performed by loading 20 µg of HCT 116 (lane1), MDA-MB-231 (lane2), Raji (lane3) and A431 (lane4) cell lysate using Novex®NuPAGE® 12 % Bis-Tris gel (Product # NP0341BOX), XCell SureLock Electrophoresis System (Product # EI0002), Novex® Sharp Pre-Stained Protein Standard (LC5800), and iBlot® Dry Blotting System (IB21001). Proteins were transferred to a nitrocellulose membrane and blocked with 5% skim milk at 4°C overnight. alpha-Tubulin was detected at ~ 52 kDa using alpha-Tubulin Biotin Conjugated Mouse Monoclonal Antibody (Product # A21371) at 1:3000 dilution in 5% skim milk for 3 hour at room temperature on a rocking platform. Streptavidin - HRP (Product # SA1007) at 1:2000 dilution was used and chemiluminescent detection was performed using Pierce™ ECL Western Blotting Substrate (Product # 32106).



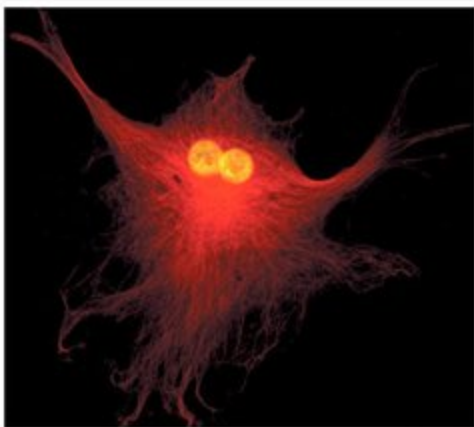
alpha Tubulin Antibody (A21371) in ICC/IF

Multinucleate HeLa cell in metaphase: DAPI, anti-bovine -tubulin, mouse monoclonal 236-10501, biotin-XX conjugate and Alexa Fluor® 568 streptavidin. A multinucleate HeLa cell in metaphase that was fixed and then stained with a combination of fluorescent dyes. The chromosomes were stained with DAPI (Product # D1306, D3571, D21490). The cytoskeleton was detected with the biotin-XX conjugate of mouse monoclonal anti-tubulin antibody (Product # A21371), which was then visualized with red-fluorescent Alexa Fluor® 568 streptavidin (Product # S-11226). The multiple-exposure image was acquired using filter sets appropriate for rhodamine and DAPI.



alpha Tubulin Antibody (A21371) in ICC/IF

Binucleate bovine pulmonary artery endothelial cell. Anti-tubulin, biotin-XX conjugate; Alexa Fluor® 568 streptavidin and nuclear yellow. A binucleate bovine pulmonary artery endothelial cell labeled with the biotin-XX conjugate of anti-tubulin antibody (Product # A21371) and Alexa Fluor® 568 streptavidin (Product # S-11226), then counterstained with nuclear yellow (Product # N21485).



3 References

Immunocytochemistry (3)

Nature immunology

A single class II myosin modulates T cell motility and stopping, but not synapse formation.

"A21371 was used in immunocytochemistry to analyze modulation of T cell motility and stopping, but not synapse formation by a single class II myosin"

Authors: Jacobelli J,Chmura SA,Buxton DB,Davis MM,Krummel MF

Species

Not Applicable

Dilution

Not Cited

Year

2004

JCI insight

Glycolytic requirement for NK cell cytotoxicity and cytomegalovirus control.

"A21371 was used in Immunocytochemistry-immunofluorescence to examine the role of glycolysis in natural killer (NK) cell function during murine cytomegalovirus infection and the ability of IL-15 to prime NK cells during cytomegalovirus infection."

Authors: Mah AY,Rashidi A,Keppel MP,Saucier N,Moore EK,Alinger JB,Tripathy SK,Agarwal SK,Jeng EK,Wong HC,Miller JS,Fehniger TA,Mace EM,French AR,Cooper MA

Species

Human

Dilution

Not Cited

Year

2017

[View more ICC/IF references on thermofisher.com](#)

For Research Use Only. Not for use in diagnostic procedures. Not for resale without express authorization. Products are warranted to operate or perform substantially in conformance with published Product specifications in effect at the time of sale, as set forth in the Production documentation, specifications and/or accompanying package inserts ("Documentation"). No claim of suitability for use in applications regulated by FDA is made. The warranty provided herein is valid only when used by properly trained individuals. Unless otherwise stated in the Documentation, this warranty is limited to one year from date of shipment when the Product is subjected to normal, proper and intended usage. This warranty does not extend to anyone other than the Buyer. Any model or sample furnished to Buyer is merely illustrative of the general type and quality of goods and does not represent that any Product will conform to such model or sample. NO OTHER WARRANTIES, EXPRESS OR IMPLIED, ARE GRANTED INCLUDING WITHOUT LIMITATION, IMPLIED WARRANTIES OF MERCHANTABILITY, FITNESS FOR ANY PARTICULAR PURPOSE, OR NON-INFRINGEMENT. BUYER'S EXCLUSIVE REMEDY FOR NON-CONFORMING PRODUCTS DURING THE WARRANTY PERIOD IS LIMITED TO REPAIR, REPLACEMENT OF OR REFUND FOR THE NON-CONFORMING PRODUCT(S) AT SELLER'S SOLE OPTION. THERE IS NO OBLIGATION TO REPAIR, REPLACE OR REFUND FOR PRODUCTS AS THE RESULT OF (I) ACCIDENT, DISASTER OR EVENT OF FORCE MAJEURE, (II) MISUSE, FAULT OR NEGLIGENCE OF OR BY BUYER, (III) USE OF THE PRODUCTS IN A MANNER FOR WHICH THEY WERE NOT DESIGNED, OR (IV) IMPROPER STORAGE AND HANDLING OF THE PRODUCTS. Unless otherwise expressly stated on the Product or in the documentation accompanying the Product, the Product is intended for research only and is not to be used for any other purpose, including without limitation, unauthorized commercial uses, in vitro diagnostic uses, ex vivo or in vivo therapeutic uses, or any type of consumption by or application to human or animals.