

Donkey anti-Mouse IgG (H+L) Highly Cross-Adsorbed Secondary Antibody, Alexa Fluor™ Plus 405

Product Details	
Size	1 mg
Species Reactivity	Mouse
Host/Isotype	Donkey / IgG
Class	Polyclonal
Type	Secondary Antibody
Conjugate	Alexa Fluor™ Plus 405
Excitation/Emission Max	404/455 nm
Immunogen	Gamma Immunoglobins Heavy and Light chains
Form	Liquid
Concentration	2 mg/mL
Purification	Affinity chromatography
Storage buffer	proprietary buffer, pH 6.5
Contains	0.016% Methylisothiazolone, 0.016% Bromonitrodioxane
Storage conditions	4° C, store in dark
RRID	AB_2884884

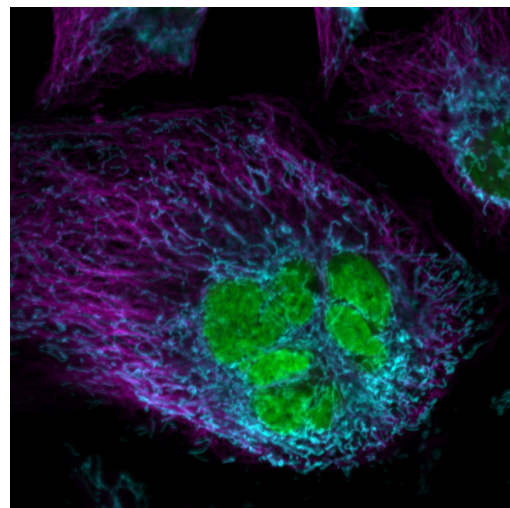
Applications	Tested Dilution	Publications
Immunocytochemistry (ICC/IF)	1-10 µg/mL	-

Product Specific Information

To minimize cross-reactivity, the donkey anti-mouse IgG whole antibodies have been cross-adsorbed against serum proteins from bovine, goat, chicken, guinea pig, hamster, horse, sheep, rabbit, rat, and human. Cross-adsorption or pre-adsorption is a purification step to increase specificity of the antibody resulting in less background staining and cross-reactivity. The secondary antibody solution is passed through a column matrix containing immobilized serum proteins from potentially cross-reactive species. Only the nonspecific-binding secondary antibodies are captured in the column, and the highly specific secondaries flow through. Further passages through additional columns result in highly cross-adsorbed preparations of secondary antibody. The benefits of these extra steps are apparent in multiplexing/multicolor-staining experiments where there is potential cross-reactivity with other primary antibodies or in tissue/cell fluorescent staining experiments where there may be the presence of endogenous immunoglobulins.

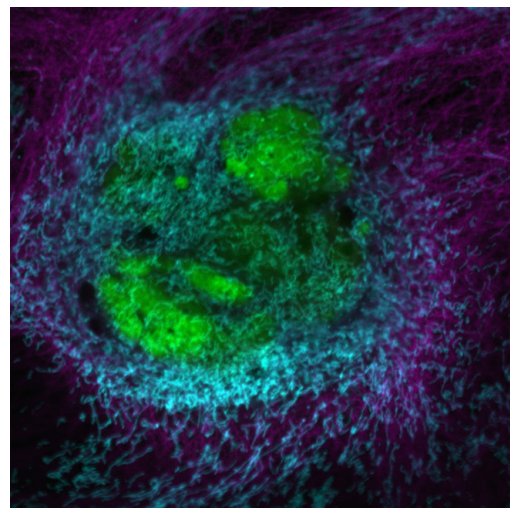
Using conjugate solutions: Centrifuge the protein conjugate solution briefly in a microcentrifuge before use; add only the supernatant to the experiment. This step will help eliminate any protein aggregates that may have formed during storage, thereby reducing nonspecific background staining. Because staining protocols vary with application, the appropriate dilution of antibody should be determined empirically

Specificity: This antibody binds to heavy chains on mouse IgG and light chains on all mouse immunoglobulins. This antibody does not bind non-immunoglobulin mouse serum proteins or IgG from bovine, chicken, goat, guinea pig, hamster, horse, human, rabbit, rat or sheep.



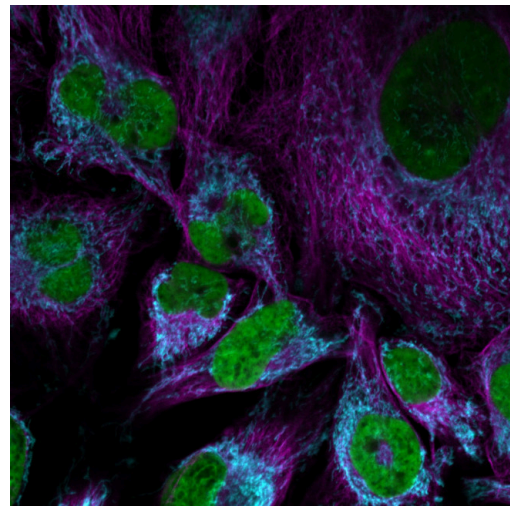
Mouse IgG (H+L) Highly Cross-Adsorbed Secondary Antibody (A48257) in ICC/IF

Immunofluorescent analysis of tubulin in BPAE cells. The cells were fixed with 4% formaldehyde for 20 mins, washed 3x in PBS, permeabilized with 0.5% Triton X-100 in PBS for 20 minutes, washed 3x in PBS and blocked with 3% BSA in PBS for 30 minutes. Cells were incubated with mouse anti-ATP Synthase and rabbit anti-tubulin diluted in 3% BSA in PBS overnight at 4C and washed 3x in PBS. Cells were then incubated with Alexa Fluor Plus 405 Donkey anti-mouse (Product # A48257) at a dilution of 1:250 and Alexa Fluor Plus 647 Goat anti-rabbit (Product # A32733) at a dilution of 1:500 in the presence of 3% BSA in PBS and Sytox Green (Product # S7020) at a dilution of 1:10 k for 1 hour at room temperature followed by 3 washes in PBS. The images contain overlay of mitochondria (cyan), tubulin (magenta) and nuclei (green). Images were taken on a Zeiss 510 confocal at 40X magnification.



Mouse IgG (H+L) Highly Cross-Adsorbed Secondary Antibody (A48257) in ICC/IF

Immunofluorescent analysis of tubulin in BPAE cells. The cells were fixed with 4% formaldehyde for 20 mins, washed 3x in PBS, permeabilized with 0.5% Triton X-100 in PBS for 20 minutes, washed 3x in PBS and blocked with 3% BSA in PBS for 30 minutes. Cells were incubated with mouse anti-ATP Synthase and rabbit anti-tubulin diluted in 3% BSA in PBS overnight at 4C and washed 3x in PBS. Cells were then incubated with Alexa Fluor Plus 405 Donkey anti-mouse (Product # A48257) at a dilution of 1:250 and Alexa Fluor Plus 647 Goat anti-rabbit (Product # A32733) at a dilution of 1:500 in the presence of 3% BSA in PBS and Sytox Green (Product # S7020) at a dilution of 1:10 k for 1 hour at room temperature followed by 3 washes in PBS. The images contain overlay of mitochondria (cyan), tubulin (magenta) and nuclei (green). Images were taken on a Zeiss 510 confocal at 40X magnification.



Mouse IgG (H+L) Highly Cross-Adsorbed Secondary Antibody (A48257) in ICC/IF

Immunofluorescent analysis of tubulin in BPAE cells. The cells were fixed with 4% formaldehyde for 20 mins, washed 3x in PBS, permeabilized with 0.5% Triton X-100 in PBS for 20 minutes, washed 3x in PBS and blocked with 3% BSA in PBS for 30 minutes. Cells were incubated with mouse anti-ATP Synthase and rabbit anti-tubulin diluted in 3% BSA in PBS overnight at 4C and washed 3x in PBS. Cells were then incubated with Alexa Fluor Plus 405 Donkey anti-mouse (Product # A48257) at a dilution of 1:250 and Alexa Fluor Plus 647 Goat anti-rabbit (Product # A32733) at a dilution of 1:500 in the presence of 3% BSA in PBS and Sytox Green (Product # S7020) at a dilution of 1:10 k for 1 hour at room temperature followed by 3 washes in PBS. The images contain overlay of mitochondria (cyan), tubulin (magenta) and nuclei (green). Images were taken on a Zeiss 510 confocal at 40X magnification.

[View more figures on thermofisher.com](#)

17 References

Rho/ROCK activity tunes cell compartment segregation and differentiation in nephron-forming niches
bioRxiv (2023)

Synaptic expression of TAR-DNA-binding protein 43 in the mouse spinal cord determined using super-resolution microscopy. Front Mol Neurosci (2023)

Selective dysfunction of fast-spiking inhibitory interneurons and disruption of perineuronal nets in a tauopathy mouse model. iScience (2023)

Human tau-overexpressing mice recapitulate brainstem involvement and neuropsychiatric features of early Alzheimer's disease. Acta Neuropathol Commun (2023)

A beta cell subset with enhanced insulin secretion and glucose metabolism is reduced in type 2 diabetes. Nat Cell Biol (2023)

For Research Use Only. Not for use in diagnostic procedures. Not for resale without express authorization. Products are warranted to operate or perform substantially in conformance with published Product specifications in effect at the time of sale, as set forth in the Production documentation, specifications and/or accompanying package inserts ("Documentation"). No claim of suitability for use in applications regulated by FDA is made. The warranty provided herein is valid only when used by properly trained individuals. Unless otherwise stated in the Documentation, this warranty is limited to one year from date of shipment when the Product is subjected to normal, proper and intended usage. This warranty does not extend to anyone other than the Buyer. Any model or sample furnished to Buyer is merely illustrative of the general type and quality of goods and does not represent that any Product will conform to such model or sample. NO OTHER WARRANTIES, EXPRESS OR IMPLIED, ARE GRANTED INCLUDING WITHOUT LIMITATION, IMPLIED WARRANTIES OF MERCHANTABILITY, FITNESS FOR ANY PARTICULAR PURPOSE, OR NON INFRINGEMENT. BUYER'S EXCLUSIVE REMEDY FOR NON-CONFORMING PRODUCTS DURING THE WARRANTY PERIOD IS LIMITED TO REPAIR, REPLACEMENT OF OR REFUND FOR THE NON-CONFORMING PRODUCT(S) AT SELLER'S SOLE OPTION. THERE IS NO OBLIGATION TO REPAIR, REPLACE OR REFUND FOR PRODUCTS AS THE RESULT OF (i) ACCIDENT, DISASTER OR EVENT OF FORCE MAJEURE, (ii) MISUSE, FAULT OR NEGLIGENCE OF OR BY BUYER, (iii) USE OF THE PRODUCTS IN A MANNER FOR WHICH THEY WERE NOT DESIGNED, OR (iv) IMPROPER STORAGE AND HANDLING OF THE PRODUCTS. Unless otherwise expressly stated on the Product or in the documentation accompanying the Product, the Product is intended for research only and is not to be used for any other purpose, including without limitation, unauthorized commercial uses, in vitro diagnostic uses, ex vivo or in vivo therapeutic uses, or any type of consumption by or application to human or animals.