

AMPK alpha-1 Monoclonal Antibody (9Q34)

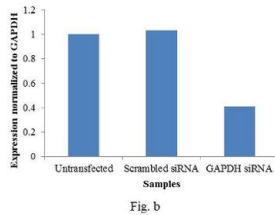
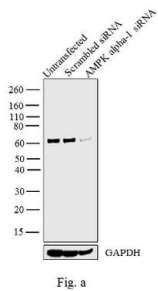
Product Details	
Size	100 µg
Species Reactivity	Human, Mouse, Rat
Host/Isotope	Mouse / IgG1, kappa
Class	Monoclonal
Type	Antibody
Clone	9Q34
Conjugate	Unconjugated
Immunogen	Recombinant fragment of human AMPK-alpha-1 expressed in E. coli.
Form	Liquid
Purification	purified
Storage buffer	PBS, pH 7.2, with 1% BSA
Contains	0.1% sodium azide
Storage Conditions	Store at 4°C short term. For long term storage, store at -20°C, avoiding freeze/thaw cycles.
RRID	AB_2536333

Applications	Tested	Dilution	Published
Western Blot (WB)	✓	1:500	1 Publication
Immunocytochemistry (ICC)	✓	1:100	
Immunofluorescence (IF)	✓	1:100	

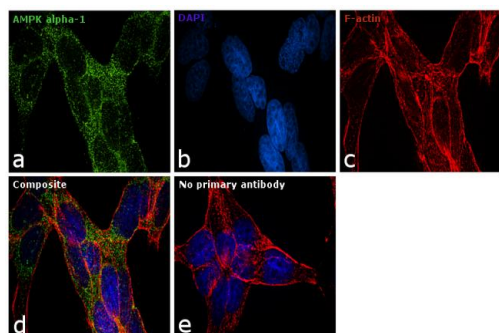
Advanced Verification Data

AMPK alpha-1 Antibody (AHO1332)

Antibody specificity was demonstrated by siRNA mediated knockdown of target protein. MCF7 cells were transfected with AMPK alpha-1 siRNA and loss of signal was observed in Western Blot using Anti- AMPK alpha-1 Monoclonal Antibody (Product # AHO1332). KnockDown validation info.



Product Images For AMPK alpha-1 Monoclonal Antibody (9Q34)

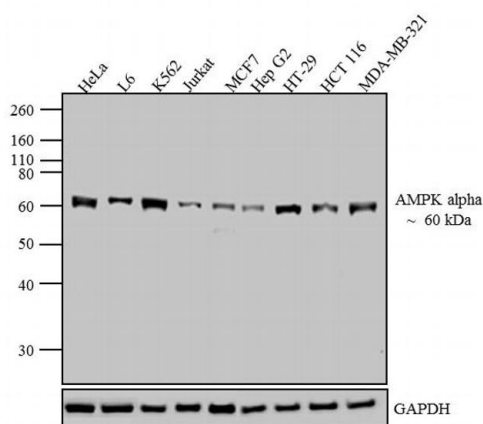


AMPK alpha-1 Antibody (AHO1332) in IF

Immunofluorescence analysis of AMPK alpha-1 was performed using 70% confluent log phase LNCap cells. The cells were fixed with 4% paraformaldehyde for 10 minutes, permeabilized with 0.1% Triton™ X-100 for 10 minutes, and blocked with 1% BSA for 1 hour at room temperature. The cells were labeled with AMPK alpha-1 Monoclonal Antibody (9Q34)(Product # AHO1332) at 1:100 dilution in 0.1% BSA and incubated overnight at 4 degree and then labeled with Goat anti-Mouse IgG (H+L) Superclonal™ Secondary Antibody, Alexa Fluor® 488 conjugate (Product # A28175) at a dilution of 1:2000 for 45 minutes at room temperature (Panel a: green). Nuclei (Panel b: blue) were stained with SlowFade® Gold Antifade Mountant with DAPI (Product # S36938). F-actin (Panel c: red) was stained with Rhodamine Phalloidin (Product # R415, 1:300). Panel d represents the merged image showing mitochondrial localization. Panel e represents control cells with no primary antibody to assess background. The images were captured at 60X magnification.

AMPK alpha-1 Antibody (AHO1332) in WB

Western blot analysis was performed on whole cell extracts (20 µg lysate) of HeLa (lane 1), L6 (lane 2), K562 (lane 3), Jurkat (lane 4), MCF7 (lane 5), Hep G2 (lane 6), HT-29 (lane 7), HCT 116 (lane 8) and MDA-MB-231 (lane 9). The blots were probed with Anti-AMPK alpha Mouse Monoclonal Antibody (Product # AHO1332, 1:500 dilution) and detected by chemiluminescence Goat anti-Mouse IgG (H+L) Secondary Antibody, HRP conjugate (Product # 62-6520, 1:4000 dilution). A 60 kDa band corresponding to AMPK alpha was observed across the cell lines tested. Known quantity of protein samples were electrophoresed using Novex® NuPAGE® 12 % Bis-Tris gel (Product # NP0342BOX), XCell SureLock™ Electrophoresis System (Product # EI0002) and Novex® Sharp Pre-Stained Protein Standard (Product # LC5800). Resolved proteins were then transferred onto a nitrocellulose membrane with iBlot® 2 Dry Blotting System (Product # IB21001). The membrane was probed with the relevant primary and secondary Antibody following blocking with 5 % skimmed milk. Chemiluminescent detection was performed using Pierce™ ECL Western Blotting Substrate (Product # 32106).



[View more figures on thermofisher.com](#)

1 Reference

Western Blot (1)

Frontiers in cellular and infection microbiology

Impaired Cellular Energy Metabolism Contributes to Duck-Enteritis-Virus-Induced Autophagy via the AMPK-TSC2-MTOR Signaling Pathway.

"Published figure using AMPK alpha-1 monoclonal antibody (Product # AHO1332) in Western Blot"

Authors: Yin H,Zhao L,Li S,Xu L,Wang Y,Chen H

Species
Not Applicable

Dilution
Not Cited

Year
2018

For Research Use Only. Not for use in diagnostic procedures. Not for resale without express authorization. Products are warranted to operate or perform substantially in conformance with published Product specifications in effect at the time of sale, as set forth in the Production documentation, specifications and/or accompanying package inserts ("Documentation"). No claim of suitability for use in applications regulated by FDA is made. The warranty provided herein is valid only when used by properly trained individuals. Unless otherwise stated in the Documentation, this warranty is limited to one year from date of shipment when the Product is subjected to normal, proper and intended usage. This warranty does not extend to anyone other than the Buyer. Any model or sample furnished to Buyer is merely illustrative of the general type and quality of goods and does not represent that any Product will conform to such model or sample. NO OTHER WARRANTIES, EXPRESS OR IMPLIED, ARE GRANTED INCLUDING WITHOUT LIMITATION, IMPLIED WARRANTIES OF MERCHANTABILITY, FITNESS FOR ANY PARTICULAR PURPOSE, OR NON INFRINGEMENT. BUYER'S EXCLUSIVE REMEDY FOR NON-CONFORMING PRODUCTS DURING THE WARRANTY PERIOD IS LIMITED TO REPAIR, REPLACEMENT OF OR REFUND FOR THE NON-CONFORMING PRODUCT(S) AT SELLER'S SOLE OPTION. THERE IS NO OBLIGATION TO REPAIR, REPLACE OR REFUND FOR PRODUCTS AS THE RESULT OF (I) ACCIDENT, DISASTER OR EVENT OF FORCE MAJEURE, (II) MISUSE, FAULT OR NEGLIGENCE OF OR BY BUYER, (III) USE OF THE PRODUCTS IN A MANNER FOR WHICH THEY WERE NOT DESIGNED, OR (IV) IMPROPER STORAGE AND HANDLING OF THE PRODUCTS. Unless otherwise expressly stated on the Product or in the documentation accompanying the Product, the Product is intended for research only and is not to be used for any other purpose, including without limitation, unauthorized commercial uses, in vitro diagnostic uses, ex vivo or in vivo therapeutic uses, or any type of consumption by or application to human or animals.