

Cytochrome C Monoclonal Antibody (2B5), eBioscience™

Product Details	
Size	100 µg
Species Reactivity	Human
Host/Isotype	Mouse / IgG2a
Class	Monoclonal
Type	Antibody
Clone	2B5
Conjugate	Unconjugated
Form	Liquid
Concentration	1 mg/mL
Purification	Affinity chromatography
Storage buffer	PBS, pH 7.2-7.4
Contains	no preservative
Storage conditions	4° C
RRID	AB_10598651

Applications	Tested Dilution	Publications
Western Blot (WB)	Assay-Dependent	-
Immunocytochemistry (ICC/IF)	1:100	-
Flow Cytometry (Flow)	Assay-Dependent	-
ELISA (ELISA)	Assay-Dependent	-
Immunoprecipitation (IP)	Assay-Dependent	-

Product Specific Information

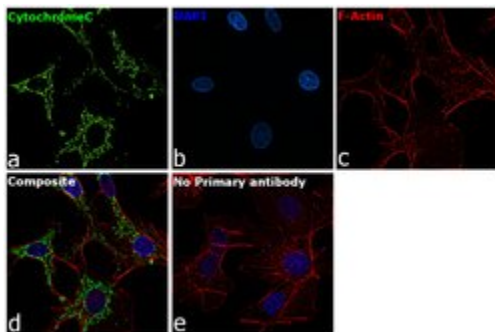
Description: Cytochrome c was identified as a component required for the crucial steps in apoptosis, caspase-3 activation and DNA fragmentation. Cytochrome c was shown to redistribute from mitochondria to cytosol during apoptosis in intact cells.

Mitochondrial cytochrome c is a water-soluble protein of 15 kDa with a net positive charge, residing loosely attached in the mitochondrial intermembrane space. Cytochrome c functions in the respiratory chain by interaction with redox partners. The release of cytochrome c into the cytosol leads to an activation of an apoptotic program via activation of a caspase dependent pathway. Cytochrome c achieves this goal by interaction with other cytosolic factors forming a complex (apoptosome) composed of cytochrome c, Apaf-1, dATP and Apaf-3/caspase 9. Bcl-2 on the other hand was shown to be able to prevent apoptosis by blocking the release of cytochrome c from mitochondria.

Applications Tested: ELISA, Flow Cytometry, Western Blotting.

Cytochrome C Antibody (BMS1037) in ICC/IF

Immunofluorescence analysis of Cytochrome C was performed using 70% confluent log phase Hep G2 cells. The cells were fixed with 4% paraformaldehyde for 10 minutes, permeabilized with 0.1% Triton™ X-100 for 15 minutes, and blocked with 2% BSA for 45 minutes at room temperature. The cells were labeled with Cytochrome C Monoclonal Antibody (2B5), eBioscience™ (Product # BMS1037) at 1:100 dilution in 0.1% BSA, incubated at 4 degree celsius overnight and then labeled with Goat anti-Mouse IgG (H+L) Highly Cross-Adsorbed Secondary Antibody, Alexa Fluor Plus 488 (Product # A32723), (1:2000 dilution), for 45 minutes at room temperature (Panel a: Green). Nuclei (Panel b:Blue) were stained with ProLong™ Diamond Antifade Mountant with DAPI (Product # P36962). F-actin (Panel c: Red) was stained with Rhodamine Phalloidin (Product # R415, 1:300 dilution). Panel d represents the merged image showing cytoplasmic (mitochondria-like) localization. Panel e represents control cells with no primary antibody to assess background. The images were captured at 60X magnification.



For Research Use Only. Not for use in diagnostic procedures. Not for resale without express authorization. Products are warranted to operate or perform substantially in conformance with published Product specifications in effect at the time of sale, as set forth in the Production documentation, specifications and/or accompanying package inserts ("Documentation"). No claim of suitability for use in applications regulated by FDA is made. The warranty provided herein is valid only when used by properly trained individuals. Unless otherwise stated in the Documentation, this warranty is limited to one year from date of shipment when the Product is subjected to normal, proper and intended usage. This warranty does not extend to anyone other than the Buyer. Any model or sample furnished to Buyer is merely illustrative of the general type and quality of goods and does not represent that any Product will conform to such model or sample. NO OTHER WARRANTIES, EXPRESS OR IMPLIED, ARE GRANTED INCLUDING WITHOUT LIMITATION, IMPLIED WARRANTIES OF MERCHANTABILITY, FITNESS FOR ANY PARTICULAR PURPOSE, OR NON INFRINGEMENT. BUYER'S EXCLUSIVE REMEDY FOR NON-CONFORMING PRODUCTS DURING THE WARRANTY PERIOD IS LIMITED TO REPAIR, REPLACEMENT OF OR REFUND FOR THE NON-CONFORMING PRODUCT(S) AT SELLER'S SOLE OPTION. THERE IS NO OBLIGATION TO REPAIR, REPLACE OR REFUND FOR PRODUCTS AS THE RESULT OF (I) ACCIDENT, DISASTER OR EVENT OF FORCE MAJEURE, (II) MISUSE, FAULT OR NEGLIGENCE OF OR BY BUYER, (III) USE OF THE PRODUCTS IN A MANNER FOR WHICH THEY WERE NOT DESIGNED, OR (IV) IMPROPER STORAGE AND HANDLING OF THE PRODUCTS. Unless otherwise expressly stated on the Product or in the documentation accompanying the Product, the Product is intended for research only and is not to be used for any other purpose, including without limitation, unauthorized commercial uses, in vitro diagnostic uses, ex vivo or in vivo therapeutic uses, or any type of consumption by or application to human or animals.