

CD62L (L-Selectin) Monoclonal Antibody (DREG.55), FITC, eBioscience™

Product Details	
Size	100 Tests
Species Reactivity	Human
Host/Isotype	Mouse / IgG1
Recommended Isotype Control	Mouse IgG1 kappa Isotype Control (P3.6.2.8.1), FITC, eBioscience™
Class	Monoclonal
Type	Antibody
Clone	DREG.55
Conjugate	FITC
Form	Liquid
Concentration	10 µL/Test
Purification	Affinity chromatography
Storage buffer	TBS, pH 7.2-7.4, with 1% BSA
Contains	0.02% sodium azide
Storage conditions	4° C, store in dark
RRID	AB_10597456

Applications	Tested Dilution	Publications
Flow Cytometry (Flow)	Assay-Dependent	-

Product Specific Information

Description: The antibody can be used to stain acetone-fixed cryostat sections or cell smears. BMS121 is not suitable for paraffin sections but is suitable as primary antibody in staining for FACS analysis.

BMS121FI can be used for direct staining of cells, BMS121BT can be used in a 2-step procedure using the biotin-(strept)avidin system.

BMS121 has not been tested in functional assays but is suitable for ELISA application.

Leukocyte-Endothelial Cell Adhesion Molecule-1 belongs to the selectin family of adhesion molecule. Together with E-selectin, P-selectin and L-selectin mediates the initial interactions of leukocytes with endothelial cells.

Selectins guide non-activated polymorphonuclear cells to the areas of inflammation in creating first, loose contacts with the endothelial layer. L-selectin in this aspect mediates rolling of PMN's on endothelial cells. The potential binding partners of L-selectin carry a negative charge, probably a sialic acid and/or sulphate, and may contain mannose and fucose. In addition, L-selectin may also interact with E-selectin which is expressed on cytokine-activated endothelial cells. L-selectin is constitutively expressed on most leukocytes in a seemingly functional form. It is required for the binding of lymphocytes to the high endothelial venules of peripheral lymph nodes and for the invasion of neutrophils into sites of inflammation.

When neutrophils are activated, L-selectin is shed by proteolytic cleavage near the transmembrane span. Lymphocytes and

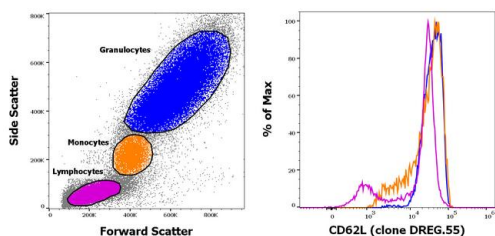
monocytes can also shed L-selectin upon activation although the kinetics are significantly lower. A broad range of activating agents are effective in inducing this response. The shed form of sL-selectin is functionally active and at high concentrations can inhibit leukocyte attachment to endothelium. The main source for sL-selectin in serum seems to be tissue localized leukocytes.

Applications Tested: Flow Cytometry.

Purity: >95%.

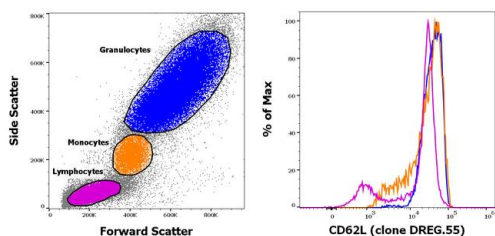
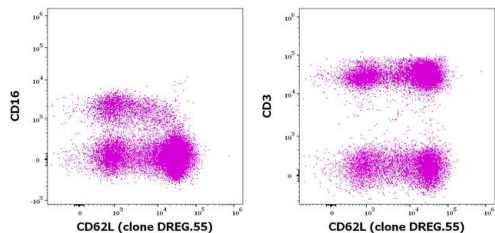
Excitation: 488 nm; Emission: 520 nm; Laser: Blue Laser

Product Images For CD62L (L-Selectin) Monoclonal Antibody (DREG.55), FITC, eBioscience™



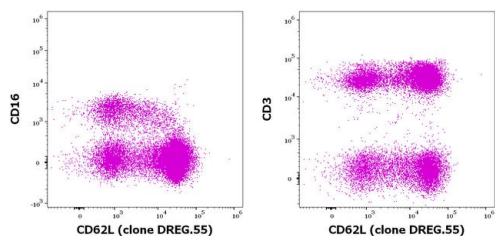
CD62L (L-Selectin) Antibody (BMS121FI) in Flow

Staining of human peripheral blood mononuclear cells with CD45 Pacific Blue, CD3 APC, CD16 PE-Cy7 and CD62L FITC. As expected based on known relative expression patterns, CD62 clone DREG.55 stains monocytes (orange), granulocytes (blue) and a subset of lymphocytes (pink).



CD62L (L-Selectin) Antibody (BMS121FI)

Staining of human peripheral blood mononuclear cells with CD45 Pacific Blue, CD3 APC, CD16 PE-Cy7 and CD62L FITC. As expected based on known relative expression patterns, CD62 clone DREG.55 stains monocytes (orange), granulocytes (blue) and a subset of lymphocytes (pink). {RE}



For Research Use Only. Not for use in diagnostic procedures. Not for resale without express authorization. Products are warranted to operate or perform substantially in conformance with published Product specifications in effect at the time of sale, as set forth in the Production documentation, specifications and/or accompanying package inserts ("Documentation"). No claim of suitability for use in applications regulated by FDA is made. The warranty provided herein is valid only when used by properly trained individuals. Unless otherwise stated in the Documentation, this warranty is limited to one year from date of shipment when the Product is subjected to normal, proper and intended usage. This warranty does not extend to anyone other than the Buyer. Any model or sample furnished to Buyer is merely illustrative of the general type and quality of goods and does not represent that any Product will conform to such model or sample. NO OTHER WARRANTIES, EXPRESS OR IMPLIED, ARE GRANTED INCLUDING WITHOUT LIMITATION, IMPLIED WARRANTIES OF MERCHANTABILITY, FITNESS FOR ANY PARTICULAR PURPOSE, OR NON INFRINGEMENT. BUYER'S EXCLUSIVE REMEDY FOR NON-CONFORMING PRODUCTS DURING THE WARRANTY PERIOD IS LIMITED TO REPAIR, REPLACEMENT OF OR REFUND FOR THE NON-CONFORMING PRODUCT(S) AT SELLER'S SOLE OPTION. THERE IS NO OBLIGATION TO REPAIR, REPLACE OR REFUND FOR PRODUCTS AS THE RESULT OF (I) ACCIDENT, DISASTER OR EVENT OF FORCE MAJEURE, (II) MISUSE, FAULT OR NEGLIGENCE OF OR BY BUYER, (III) USE OF THE PRODUCTS IN A MANNER FOR WHICH THEY WERE NOT DESIGNED, OR (IV) IMPROPER STORAGE AND HANDLING OF THE PRODUCTS. Unless otherwise expressly stated on the Product or in the documentation accompanying the Product, the Product is intended for research only and is not to be used for any other purpose, including without limitation, unauthorized commercial uses, in vitro diagnostic uses, ex vivo or in vivo therapeutic uses, or any type of consumption by or application to human or animals.