

CD61 Monoclonal Antibody (F11), PE

Product Details	
Size	2 mL
Species Reactivity	Human
Host/Isotype	Mouse / IgG1
Class	Monoclonal
Type	Antibody
Clone	F11
Conjugate	PE
Excitation/Emission Max	565/576 nm
Immunogen	Human CD61.
Form	Liquid
Concentration	0.1 mg/mL
Purification	purified
Storage buffer	PBS with BSA, sucrose
Contains	0.1% sodium azide
Storage conditions	4° C
RRID	AB_2536510

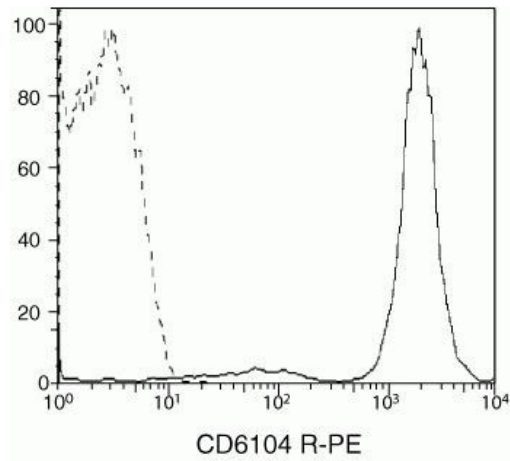
Applications	Tested Dilution	Publications
Flow Cytometry (Flow)	5 µL for 1x10^6 cells	-

Product Specific Information

Mouse anti-rat CD61, clone F11, recognizes both human and rat CD61 antigen.

Use dim light during handling, incubation with cells, and prior to analysis. It is recommended that cells be analyzed within 18 hours of staining. If the reagent is being diluted, it is recommended that only the quantity to be used within one week be diluted.

Product Images For CD61 Monoclonal Antibody (F11), PE



CD61 Antibody (CD6104-4) in Flow

Antigen Specificity: The vitronectin receptor mediates cellular adhesion to vitronectin, fibrinogen, fibronectin, thrombospondin, and von Willebrand Factor. The vitronectin receptor on platelets and megakaryocytes is composed of the integrin $\beta 3$ chain (CD61) in association with the integrin αIIb chain (CD41). On myeloid and endothelial cells, and osteoclasts, CD61 is associated with the integrin αv chain, CD512. Mouse anti-rat CD61, clone F11, recognizes the human and rat CD61 antigen.

For Research Use Only. Not for use in diagnostic procedures. Not for resale without express authorization. Products are warranted to operate or perform substantially in conformance with published Product specifications in effect at the time of sale, as set forth in the Production documentation, specifications and/or accompanying package inserts ("Documentation"). No claim of suitability for use in applications regulated by FDA is made. The warranty provided herein is valid only when used by properly trained individuals. Unless otherwise stated in the Documentation, this warranty is limited to one year from date of shipment when the Product is subjected to normal, proper and intended usage. This warranty does not extend to anyone other than the Buyer. Any model or sample furnished to Buyer is merely illustrative of the general type and quality of goods and does not represent that any Product will conform to such model or sample. NO OTHER WARRANTIES, EXPRESS OR IMPLIED, ARE GRANTED INCLUDING WITHOUT LIMITATION, IMPLIED WARRANTIES OF MERCHANTABILITY, FITNESS FOR ANY PARTICULAR PURPOSE, OR NON INFRINGEMENT. BUYER'S EXCLUSIVE REMEDY FOR NON-CONFORMING PRODUCTS DURING THE WARRANTY PERIOD IS LIMITED TO REPAIR, REPLACEMENT OF OR REFUND FOR THE NON-CONFORMING PRODUCT(S) AT SELLER'S SOLE OPTION. THERE IS NO OBLIGATION TO REPAIR, REPLACE OR REFUND FOR PRODUCTS AS THE RESULT OF (i) ACCIDENT, DISASTER OR EVENT OF FORCE MAJEURE, (ii) MISUSE, FAULT OR NEGLIGENCE OF OR BY BUYER, (iii) USE OF THE PRODUCTS IN A MANNER FOR WHICH THEY WERE NOT DESIGNED, OR (iv) IMPROPER STORAGE AND HANDLING OF THE PRODUCTS. Unless otherwise expressly stated on the Product or in the documentation accompanying the Product, the Product is intended for research only and is not to be used for any other purpose, including without limitation, unauthorized commercial uses, in vitro diagnostic uses, ex vivo or in vivo therapeutic uses, or any type of consumption by or application to human or animals.