

CD19 Monoclonal Antibody (HIB19), NovaFluor™ Blue 660-40S, eBioscience™

Product Details	
Size	100 Tests
Species Reactivity	Human
Host/Isotype	Mouse / IgG1, kappa
Class	Monoclonal
Type	Antibody
Clone	HIB19
Conjugate	NovaFluor™ Blue 660-40S
Form	Liquid
Concentration	4 µL/Test
Purification	Affinity chromatography
Storage buffer	PBS, pH 7.2
Contains	0.09% sodium azide
Storage conditions	4° C, store in dark, DO NOT FREEZE!

Applications	Tested Dilution	Publications
Flow Cytometry (Flow)	4 µL (0.6 µg)/test	-

Product Specific Information

Description: The HIB19 monoclonal antibody reacts with human CD19, a 95 kDa transmembrane glycoprotein. CD19 is expressed by B cells during all stages of development excluding the terminally differentiated plasma cells. Follicular dendritic cells also express CD19. Together CD21, CD81, Leu13, MHC class II, and CD19 form a multimolecular complex that associates with BCR. Signaling through CD19 induces tyrosine phosphorylation, calcium flux and proliferation of B cells. The SJ25C1 antibody and the HIB19 monoclonal antibody recognize overlapping epitopes.

Applications Reported: This HIB19 antibody has been reported for use in flow cytometric analysis.

Applications Tested: This HIB19 antibody has been pre-titrated and tested by flow cytometric analysis of normal human peripheral blood cells. This can be used at 4 µL (0.6 µg) per test. A test is defined as the amount (µg) of antibody that will stain a cell sample in a final volume of 100 µL. Cell number should be determined empirically but can range from 10⁵ to 10⁸ cells/test.

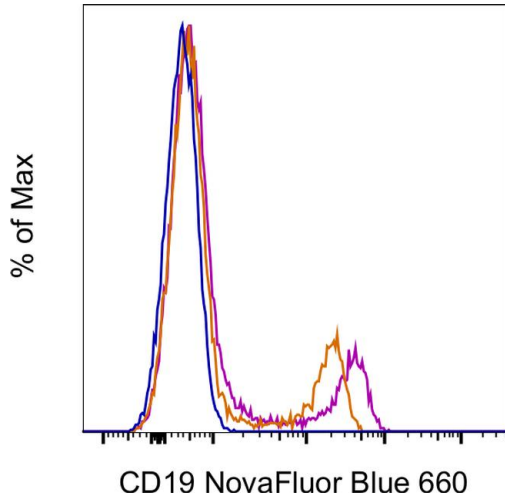
NovaFluor dyes are not compatible with DNA intercalating viability dyes. Do not use viability dyes such as propidium iodide, 7-actinomycin D (7-AAD) and DAPI. Invitrogen LIVE/DEAD Fixable Dead Cell stains are recommended for use with NovaFluor dyes.

Each NovaFluor conjugate or kit is shipped with CellBlox Blocking Buffer. Use this buffer whenever staining with NovaFluor conjugates, including single-color compensation controls using cells. Use 5 µL of CellBlox Blocking Buffer per stained cell sample containing 10³ to 10⁸ cells.

Excitation: 509 nm; **Emission:** 665 nm; **Laser:** 488 nm (Blue) Laser

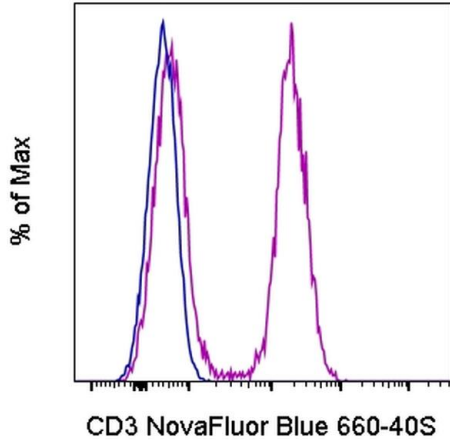
NovaFluor conjugates are based on Phiton™ technology utilizing novel nucleic acid dye structures that allow for engineered fluorescent signatures with consideration for spillover and spread impacts. Learn more

Product Images For CD19 Monoclonal Antibody (HIB19), NovaFluor™ Blue 660-40S, eBioscience™



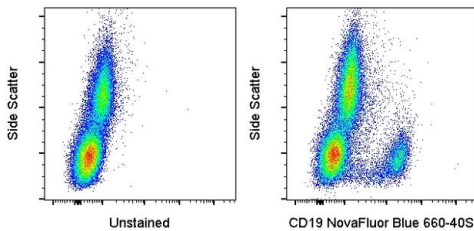
CD19 Antibody (H004T03B07) in Flow

Normal human PBMCs were either left unstained (blue histogram) or stained with CD19 Monoclonal Antibody, NovaFluor Blue 660-40S (orange histogram) or CD19 Monoclonal Antibody, NovaFluor Blue 660-120S (h004t03b08) (purple histogram) and acquired in the B7 channel on a 5-laser Cytex Aurora. Cells in the lymphocyte gate were used in the analysis.



CD19 Antibody (H004T03B07) in Flow

Normal human peripheral blood cells were either left unstained (blue histogram) or stained with CD19 Monoclonal Antibody, NovaFluor Blue 660-40S (Product # H004T03B07) (purple histogram) and acquired in the B7 channel on a 5-laser Cytex Aurora. Cells in the lymphocyte gate were used in the analysis.



CD19 Antibody (H004T03B07) in Flow

Staining of normal human peripheral blood cells with side scatter and unstained (left) or CD19 Monoclonal Antibody, NovaFluor Blue 660-40S (Product # H004T03B07) (right). Data was acquired in the B7 channel on a 5-laser Cytex Aurora and singlet cells were used for analysis.

For Research Use Only. Not for use in diagnostic procedures. Not for resale without express authorization. Products are warranted to operate or perform substantially in conformance with published Product specifications in effect at the time of sale, as set forth in the Production documentation, specifications and/or accompanying package inserts ("Documentation"). No claim of suitability for use in applications regulated by FDA is made. The warranty provided herein is valid only when used by properly trained individuals. Unless otherwise stated in the Documentation, this warranty is limited to one year from date of shipment when the Product is subjected to normal, proper and intended usage. This warranty does not extend to anyone other than the Buyer. Any model or sample furnished to Buyer is merely illustrative of the general type and quality of goods and does not represent that any Product will conform to such model or sample. NO OTHER WARRANTIES, EXPRESS OR IMPLIED, ARE GRANTED INCLUDING WITHOUT LIMITATION, IMPLIED WARRANTIES OF MERCHANTABILITY, FITNESS FOR ANY PARTICULAR PURPOSE, OR NON INFRINGEMENT. BUYER'S EXCLUSIVE REMEDY FOR NON-CONFORMING PRODUCTS DURING THE WARRANTY PERIOD IS LIMITED TO REPAIR, REPLACEMENT OF OR REFUND FOR THE NON-CONFORMING PRODUCT(S) AT SELLER'S SOLE OPTION. THERE IS NO OBLIGATION TO REPAIR, REPLACE OR REFUND FOR PRODUCTS AS THE RESULT OF (I) ACCIDENT, DISASTER OR EVENT OF FORCE MAJEURE, (II) MISUSE, FAULT OR NEGLIGENCE OF OR BY BUYER, (III) USE OF THE PRODUCTS IN A MANNER FOR WHICH THEY WERE NOT DESIGNED, OR (IV) IMPROPER STORAGE AND HANDLING OF THE PRODUCTS. Unless otherwise expressly stated on the Product or in the documentation accompanying the Product, the Product is intended for research only and is not to be used for any other purpose, including without limitation, unauthorized commercial uses, in vitro diagnostic uses, ex vivo or in vivo therapeutic uses, or any type of consumption by or application to human or animals.