

CD62L (L-Selectin) Monoclonal Antibody (DREG-56 (DREG56)), NovaFluor™ Yellow 660, eBioscience™

Product Details	
Size	100 Tests
Species Reactivity	Human
Host/Isotype	Mouse / IgG1, kappa
Class	Monoclonal
Type	Antibody
Clone	DREG-56 (DREG56)
Conjugate	NovaFluor™ Yellow 660
Form	Liquid
Concentration	5 µL/Test
Purification	Affinity chromatography
Storage buffer	PBS, pH 7.2
Contains	0.09% sodium azide
Storage conditions	4° C, store in dark, DO NOT FREEZE!

Applications	Tested Dilution	Publications
Flow Cytometry (Flow)	5 µL (0.2 µg)/test	-

Product Specific Information

Description: The DREG-56 monoclonal antibody reacts with human CD62L, a 76 kDa member of the selectin family. CD62L is expressed by neutrophils, monocytes, and subsets of T, B, and NK cells and binds a number of glycosylated, fucosylated, sulfated sialylated glycoproteins including CD34, glycam-1 and MAdCAM-1. These interactions mediate rolling of lymphocytes on activated endothelium at the sites of inflammation and homing of cells to the high endothelial venules (HEV) of peripheral lymphoid tissues.

Applications Reported: The DREG-56 (DREG56) antibody has been reported for use in flow cytometric analysis.

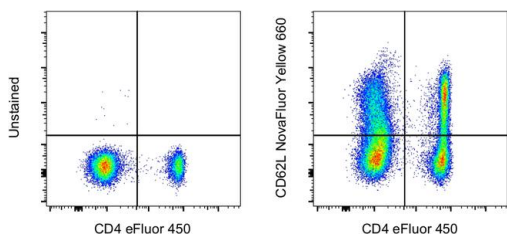
Applications Tested: The DREG-56 (DREG56) antibody has been pre-titrated and tested by flow cytometric analysis of normal human peripheral blood cells. This can be used at 5 µL (0.2 µg) per test. A test is defined as the amount (µg) of antibody that will stain a cell sample in a final volume of 100 µL. Cell number should be determined empirically but can range from 10⁵ to 10⁸ cells /test.

Each NovaFluor conjugate or kit is shipped with CellBlox Blocking Buffer. Use this buffer whenever staining with NovaFluor conjugates, including single color compensation controls using cells. Use 5 µL of CellBlox Blocking Buffer per stained cell sample containing 10³ to 10⁸ cells.

Excitation: 552 nm; **Emission:** 663 nm; **Laser:** 561 nm (Yellow) Laser

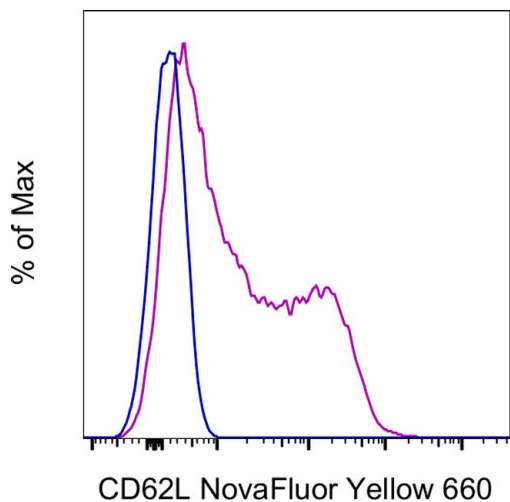
NovaFluor conjugates are based on Phiton™ technology utilizing novel nucleic acid dye structures that allow for engineered fluorescent signatures with consideration for spillover and spread impacts. Learn more

Product Images For CD62L (L-Selectin) Monoclonal Antibody (DREG-56 (DREG56)), NovaFluor™ Yellow 660, eBioscience™



CD62L (L-Selectin) Antibody (H009T03Y04) in Flow

Normal human peripheral blood cells were unstained (left) or stained with CD62L Monoclonal Antibody, NovaFluor Yellow 660 (right). All cells were co-stained with CD4 Monoclonal Antibody, eFluor 450 (Product # 48-0048-42). Total viable cells in the lymphocyte gate were used for analysis, as determined by LIVE/DEAD Blue (Product # L34962). Data was acquired in the YG4 channel on a 5-laser Cytex Aurora for the NovaFluor Yellow 660 conjugate. Cells in the lymphocyte gate were used for analysis.



CD62L (L-Selectin) Antibody (H009T03Y04) in Flow

Normal human PBMCs were either left unstained (blue histogram) or stained with CD62L Monoclonal Antibody, NovaFluor Yellow 660 (purple histogram) (Product # H009T02Y04) and acquired in the YG4 channel on a 5-laser Cytex Aurora. Cells in the lymphocyte gate were used in the analysis.

For Research Use Only. Not for use in diagnostic procedures. Not for resale without express authorization. Products are warranted to operate or perform substantially in conformance with published Product specifications in effect at the time of sale, as set forth in the Production documentation, specifications and/or accompanying package inserts ("Documentation"). No claim of suitability for use in applications regulated by FDA is made. The warranty provided herein is valid only when used by properly trained individuals. Unless otherwise stated in the Documentation, this warranty is limited to one year from date of shipment when the Product is subjected to normal, proper and intended usage. This warranty does not extend to anyone other than the Buyer. Any model or sample furnished to Buyer is merely illustrative of the general type and quality of goods and does not represent that any Product will conform to such model or sample. NO OTHER WARRANTIES, EXPRESS OR IMPLIED, ARE GRANTED INCLUDING WITHOUT LIMITATION, IMPLIED WARRANTIES OF MERCHANTABILITY, FITNESS FOR ANY PARTICULAR PURPOSE, OR NON INFRINGEMENT. BUYER'S EXCLUSIVE REMEDY FOR NON-CONFORMING PRODUCTS DURING THE WARRANTY PERIOD IS LIMITED TO REPAIR, REPLACEMENT OF OR REFUND FOR THE NON-CONFORMING PRODUCT(S) AT SELLER'S SOLE OPTION. THERE IS NO OBLIGATION TO REPAIR, REPLACE OR REFUND FOR PRODUCTS AS THE RESULT OF (I) ACCIDENT, DISASTER OR EVENT OF FORCE MAJEURE, (II) MISUSE, FAULT OR NEGLIGENCE OF OR BY BUYER, (III) USE OF THE PRODUCTS IN A MANNER FOR WHICH THEY WERE NOT DESIGNED, OR (IV) IMPROPER STORAGE AND HANDLING OF THE PRODUCTS. Unless otherwise expressly stated on the Product or in the documentation accompanying the Product, the Product is intended for research only and is not to be used for any other purpose, including without limitation, unauthorized commercial uses, in vitro diagnostic uses, ex vivo or in vivo therapeutic uses, or any type of consumption by or application to human or animals.