

CD3e Monoclonal Antibody (145-2C11), NovaFluor™ Blue 610-30S, eBioscience™

Product Details	
Size	25 µg
Species Reactivity	Mouse
Host/Isotype	Armenian hamster / IgG
Class	Monoclonal
Type	Antibody
Clone	145-2C11
Conjugate	NovaFluor™ Blue 610-30S
Excitation/Emission Max	508/615 nm
Form	Liquid
Concentration	0.1 mg/mL
Storage conditions	4° C, store in dark, DO NOT FREEZE!
RRID	AB_2896706

Applications	Tested Dilution	Publications
Flow Cytometry (Flow)	1.0 µg/test	-

Product Specific Information

Description: The 145-2C11 monoclonal antibody reacts with mouse CD3e, a 20 kDa subunit of the TCR complex. Along with the other CD3 subunits, gamma and delta, the epsilon chain is required for proper assembly, trafficking and surface expression of the TCR complex. CD3 is expressed by thymocytes in a developmentally regulated manner and by all mature T cells. Binding of 145-2C11 to TCR initiates the intracellular biochemical pathway resulting in cellular activation, proliferation, and apoptosis depending on specific conditions utilized. 145-2C11 is commonly used as a phenotypic marker for mouse T cells.

Applications Reported: This 145-2c11 antibody has been reported for use in flow cytometric analysis.

Applications Tested: This 145-2c11 antibody has been tested by flow cytometric analysis of mouse splenocytes. This may be used at less than or equal to 1.0 µg per test. A test is defined as the amount (µg) of antibody that will stain a cell sample in a final volume of 100 µL. Cell number should be determined empirically but can range from 10⁵ to 10⁸ cells/test. It is recommended that the antibody be carefully titrated for optimal performance in the assay of interest.

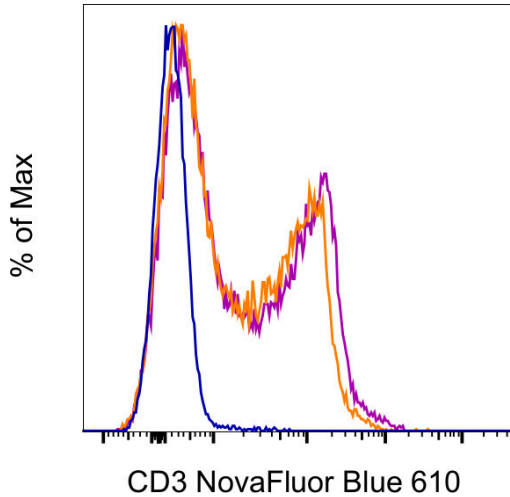
NovaFluor dyes are not compatible with DNA intercalating viability dyes. Do not use viability dyes such as propidium iodide, 7-actinomycin D (7-AAD) and DAPI. Invitrogen LIVE/DEAD Fixable Dead Cell stains are recommended for use with NovaFluor dyes.

Each NovaFluor conjugate or kit is shipped with CellBlox Blocking Buffer. Use this buffer whenever staining with NovaFluor conjugates, including single-color compensation controls using cells. Whenever possible, we recommend adding CellBlox Blocking Buffer to antibody cocktails/master mixes prior to combining with cells. Add 5 µL per sample (regardless of the number of NovaFluors in your panel) to use the antibody cocktail as intended. For single-color controls, use 5 µL of CellBlox Blocking Buffer per 100µL of cell sample containing 10³ to 10⁸ cells.

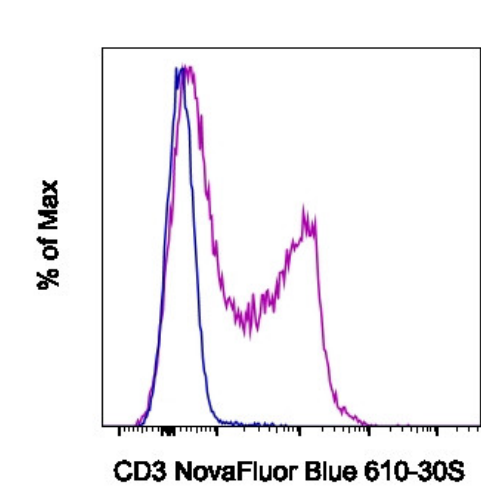
Excitation: 496 nm; **Emission:** 511 nm; **Laser:** 488 nm (Blue) Laser

NovaFluor conjugates are based on Phiton™ technology utilizing novel nucleic acid dye structures that allow for engineered fluorescent signatures with consideration for spillover and spread impacts. Learn more

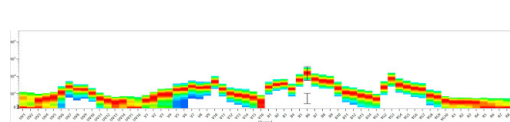
Product Images For CD3e Monoclonal Antibody (145-2C11), NovaFluor™ Blue 610-30S, eBioscience™



CD3e Antibody (M002T02B05) in Flow
C57BL/6 mouse splenocytes were either left unstained (blue histogram) or stained with 1 µg of CD3 Monoclonal Antibody, NovaFluor Blue 610-30S (orange histogram) or 1 µg of CD3 Monoclonal Antibody, NovaFluor Blue 610-70S (m002t02b06) (purple histogram) and acquired in the B6 channel on a 5-laser Cytex Aurora. Cells in the lymphocytes gate were used in the analysis.



CD3e Antibody (M002T02B05) in Flow
C57BL/6 mouse splenocytes were either left unstained (blue histogram) or stained with 1 µg of CD3 Monoclonal Antibody, NovaFluor Blue 610-30S (Product # M002T02B05) (purple histogram) and acquired in the B6 channel on a 5-laser Cytex Aurora. Cells in the lymphocyte gate were used in the analysis.



CD3e Antibody (M002T02B05) in Flow
Spectral signature for NovaFluor Blue 610-30S collected on a 5-laser Cytex Aurora Full Spectrum flow cytometer using Cytex assay settings. Human peripheral blood mononuclear cells were stained with anti-human CD4 (SK3) and signatures displayed following gating on the lymphocyte population.

For Research Use Only. Not for use in diagnostic procedures. Not for resale without express authorization. Products are warranted to operate or perform substantially in conformance with published Product specifications in effect at the time of sale, as set forth in the Production documentation, specifications and/or accompanying package inserts ("Documentation"). No claim of suitability for use in applications regulated by FDA is made. The warranty provided herein is valid only when used by properly trained individuals. Unless otherwise stated in the Documentation, this warranty is limited to one year from date of shipment when the Product is subjected to normal, proper and intended usage. This warranty does not extend to anyone other than the Buyer. Any model or sample furnished to Buyer is merely illustrative of the general type and quality of goods and does not represent that any Product will conform to such model or sample. NO OTHER WARRANTIES, EXPRESS OR IMPLIED, ARE GRANTED INCLUDING WITHOUT LIMITATION, IMPLIED WARRANTIES OF MERCHANTABILITY, FITNESS FOR ANY PARTICULAR PURPOSE, OR NON INFRINGEMENT. BUYER'S EXCLUSIVE REMEDY FOR NON-CONFORMING PRODUCTS DURING THE WARRANTY PERIOD IS LIMITED TO REPAIR, REPLACEMENT OF OR REFUND FOR THE NON-CONFORMING PRODUCT(S) AT SELLER'S SOLE OPTION. THERE IS NO OBLIGATION TO REPAIR, REPLACE OR REFUND FOR PRODUCTS AS THE RESULT OF (i) ACCIDENT, DISASTER OR EVENT OF FORCE MAJEURE, (ii) MISUSE, FAULT OR NEGLIGENCE OF OR BY BUYER, (iii) USE OF THE PRODUCTS IN A MANNER FOR WHICH THEY WERE NOT DESIGNED, OR (iv) IMPROPER STORAGE AND HANDLING OF THE PRODUCTS. Unless otherwise expressly stated on the Product or in the documentation accompanying the Product, the Product is intended for research only and is not to be used for any other purpose, including without limitation, unauthorized commercial uses, in vitro diagnostic uses, ex vivo or in vivo therapeutic uses, or any type of consumption by or application to human or animals.