

# CD62L (L-Selectin) Monoclonal Antibody (MEL-14), NovaFluor™ Blue 510, eBioscience™

Product Details	
Size	25 µg
Species Reactivity	Mouse
Host/Isotype	Rat / IgG2a, kappa
Class	Monoclonal
Type	Antibody
Clone	MEL-14
Conjugate	NovaFluor™ Blue 510
Form	Liquid
Concentration	0.1 mg/mL
Purification	Affinity chromatography
Storage buffer	PBS, pH 7.2
Contains	0.09% sodium azide
Storage conditions	4° C, store in dark, DO NOT FREEZE!

Applications	Tested Dilution	Publications
Flow Cytometry (Flow)	0.1 µg/test	-

## Product Specific Information

**Description:** The MEL-14 monoclonal antibody reacts with mouse CD62L, a 76 kDa member of the selectin family. CD62L is expressed by neutrophils, monocytes, and subsets of T, B, and NK cells and binds a number of glycosylated, fucosylated, sulfated sialylated glycoproteins including CD34, glycam-1 and MAdCam-1. These interactions mediate rolling of lymphocytes on activated endothelium at the sites of inflammation and homing of cells to the high endothelial venules (HEV) of peripheral lymphoid tissues.

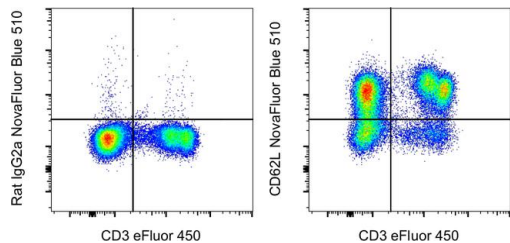
**Applications Reported:** The MEL-14 antibody has been reported for use in flow cytometric analysis.

**Applications Tested:** The MEL-14 antibody has been tested by flow cytometric analysis of mouse splenocytes. This can be used at less than or equal to 0.2 µg per test. A test is defined as the amount (µg) of antibody that will stain a cell sample in a final volume of 100 µL. Cell number should be determined empirically but can range from 10<sup>5</sup> to 10<sup>8</sup> cells/test. It is recommended that the antibody be carefully titrated for optimal performance in the assay of interest.

Each NovaFluor conjugate or kit is shipped with CellBlox Blocking Buffer. Use this buffer whenever staining with NovaFluor conjugates, including single color compensation controls using cells. Use 5 µL of CellBlox Blocking Buffer per stained cell sample containing 10<sup>3</sup> to 10<sup>8</sup> cells.

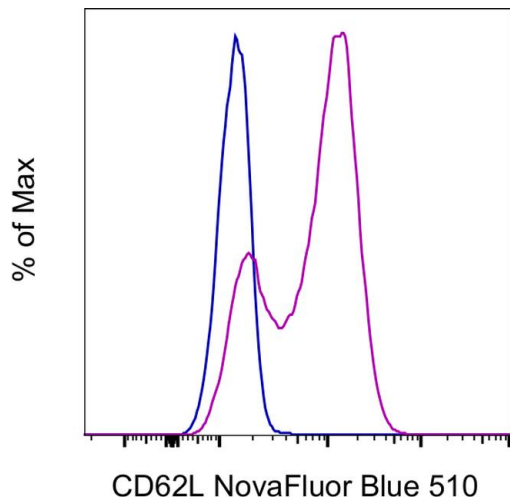
**Excitation:** 496 nm; **Emission:** 511 nm; **Laser:** 488 nm (Blue) Laser

NovaFluor conjugates are based on Phiton™ technology utilizing novel nucleic acid dye structures that allow for engineered fluorescent signatures with consideration for spillover and spread impacts. Learn more



**CD62L (L-Selectin) Antibody (M006T02B01) in Flow**

C57BL/6 mouse splenocytes were stained with CD3e Monoclonal Antibody, eFluor 450 (Product # 48-0031-82) and 0.2 µg of Rat IgG2a, kappa Isotype Control, NovaFluor Blue 510 (left) or 0.2 µg of CD62L Monoclonal Antibody, NovaFluor Blue 510 (right) (Product # M006T02B01). Total viable cells were used for analysis, as determined by LIVE/DEAD Blue (Product # L34962).



**CD62L (L-Selectin) Antibody (M006T02B01) in Flow**

C57BL/6 mouse splenocytes were stained with 0.2 µg of Rat IgG2a, kappa Isotype Control, NovaFluor Blue 510 (blue histogram) or 0.2 µg of CD62L Monoclonal Antibody, NovaFluor Blue 510 (purple histogram) (Product # M006T02B01) and acquired in the B1 channel on a 5-laser Cytex Aurora. Cells in the splenocyte gate were used in the analysis.

For Research Use Only. Not for use in diagnostic procedures. Not for resale without express authorization. Products are warranted to operate or perform substantially in conformance with published Product specifications in effect at the time of sale, as set forth in the Production documentation, specifications and/or accompanying package inserts ("Documentation"). No claim of suitability for use in applications regulated by FDA is made. The warranty provided herein is valid only when used by properly trained individuals. Unless otherwise stated in the Documentation, this warranty is limited to one year from date of shipment when the Product is subjected to normal, proper and intended usage. This warranty does not extend to anyone other than the Buyer. Any model or sample furnished to Buyer is merely illustrative of the general type and quality of goods and does not represent that any Product will conform to such model or sample. NO OTHER WARRANTIES, EXPRESS OR IMPLIED, ARE GRANTED INCLUDING WITHOUT LIMITATION, IMPLIED WARRANTIES OF MERCHANTABILITY, FITNESS FOR ANY PARTICULAR PURPOSE, OR NON INFRINGEMENT. BUYER'S EXCLUSIVE REMEDY FOR NON-CONFORMING PRODUCTS DURING THE WARRANTY PERIOD IS LIMITED TO REPAIR, REPLACEMENT OF OR REFUND FOR THE NON-CONFORMING PRODUCT(S) AT SELLER'S SOLE OPTION. THERE IS NO OBLIGATION TO REPAIR, REPLACE OR REFUND FOR PRODUCTS AS THE RESULT OF (I) ACCIDENT, DISASTER OR EVENT OF FORCE MAJEURE, (II) MISUSE, FAULT OR NEGLIGENCE OF OR BY BUYER, (III) USE OF THE PRODUCTS IN A MANNER FOR WHICH THEY WERE NOT DESIGNED, OR (IV) IMPROPER STORAGE AND HANDLING OF THE PRODUCTS. Unless otherwise expressly stated on the Product or in the documentation accompanying the Product, the Product is intended for research only and is not to be used for any other purpose, including without limitation, unauthorized commercial uses, in vitro diagnostic uses, ex vivo or in vivo therapeutic uses, or any type of consumption by or application to human or animals.