

EGF Monoclonal Antibody (1H11)

Product Details

Size	200 µg
Species Reactivity	Human
Published Species	Human
Host/Isotype	Mouse / IgG1
Class	Monoclonal
Type	Antibody
Clone	1H11
Conjugate	Unconjugated
Immunogen	Recombinant Human EGF
Form	Liquid
Concentration	1 mg/mL
Purification	Protein A
Storage buffer	PBS
Contains	no preservative
Storage conditions	-20°C
RRID	AB_2536656

Applications	Tested Dilution	Publications
Western Blot (WB)	1:1,000-1:5,000	-
Immunocytochemistry (ICC/IF)	1:50	-
ELISA (ELISA)	1-3 µg/mL	-
Dot blot (DB)	-	1 Publication

Product Specific Information

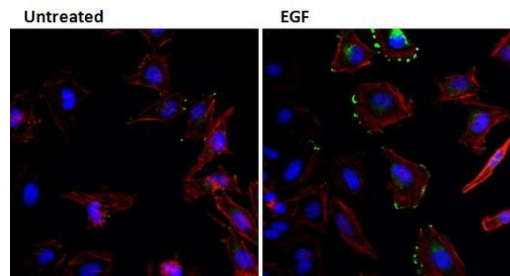
The M805 anti-EGF antibody (Clone 1H11) has successfully been paired as the coating antibody in a sandwich ELISA with detection antibody M806B (biotinylated conjugate of Clone 3A8).

Typical dilutions for sandwich ELISA include 1-3 µg/mL for coating and 0.125-0.5 µg/mL for detection.

Product Images For EGF Monoclonal Antibody (1H11)

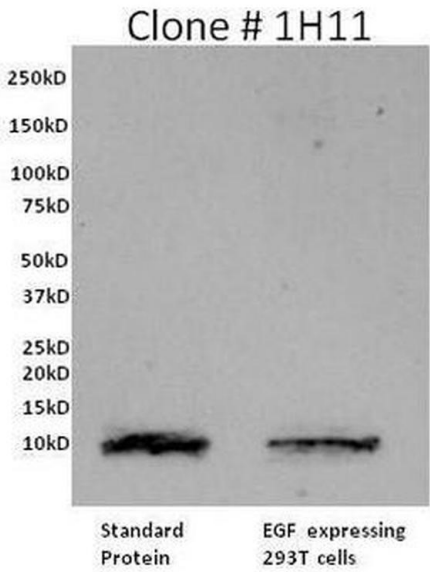
EGF Antibody (M805) in ICC/IF

Immunofluorescent analysis of EGF (green) in HeLa cells either left untreated (left panel) or treated with 10 ng/mL EGF (right panel) for 5 minutes. Formalin fixed cells were permeabilized with 0.1% Triton X-100 in TBS for 10 minutes at room temperature and blocked with 1% Blocker BSA (Product # 37525) for 15 minutes at room temperature. Cells were probed with an EGF monoclonal antibody (Product # M805) at a dilution of 1:50 for at least 1 hour at room temperature, washed with PBS, and incubated with DyLight 488 goat anti-mouse IgG secondary antibody (Product # 35502) at a dilution of 1:400 for 30 minutes at room temperature. F-Actin (red) was stained with DyLight 554 Phalloidin (Product # 21834) and nuclei (blue) were stained with Hoechst 33342 dye (Product # 62249). Images were taken on a Thermo Scientific ArrayScan at 20X magnification.



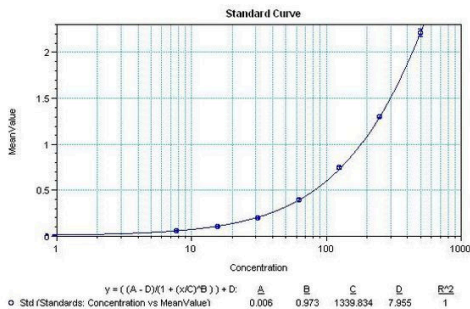
EGF Antibody (M805) in WB

Western blot analysis of Human EGF was performed by loading 2 µg of recombinant human EGF (Lane 1) or supernatant from an EGF expression clone transfected in 293T cells onto a 4-20% Tris-HCl polyacrylamide gel. Proteins were transferred to a PVDF membrane and blocked with 5% Milk/TBST for at least 1 hour. Membranes were probed with an EGF monoclonal antibody recognizing Human EGF (Product # M805) at a dilution of 1:5000 overnight at 4° C on a rocking platform. Membranes were washed in TBS-0.1%Tween 20 and probed with a goat anti-mouse-HRP secondary antibody (Product # 31430) at a dilution of 1:10,000 for at least one hour. Membranes were washed and chemiluminescent detection performed using Super Signal West Dura (Product # 34075).



EGF Antibody (M805) in ELISA

Sandwich ELISA analysis of Human EGF was performed using the Thermo Scientific ELISA Kit (Product # EHEGF) by coating a blank 96-well microtiter plate with 100 µL per well of Human EGF monoclonal antibody (Product # M805) in duplicate at 1, 3, 4, 5, 7, and 9 µg/mL in DPBS (Product # 28374) and incubating for 12-18 hours at 4C. The plate was aspirated and blocked with 300 µL per well of 4% BSA and 5% sucrose in DPBS for 1 hour at room temperature. Human EGF recombinant protein at 50 µL per well was added in duplicate at 500, 250, 125, 62.5, 31.25, 15.625, 7.8125 and 0 pg/mL for 2 hours at room temperature along with 50 µL of Human EGF biotinylated monoclonal antibody (Product # M806B) in all applicable wells at 0.2 µg/mL for 2 hours at room temperature. The plate was washed with ELISA Wash Buffer (Product # N503) and incubated with 100 µL per well of Streptavidin-HRP (Product # N504) in all test wells at 1:130,000 dilution for 1 hour at room temperature and then washed and incubated with 100 µL per well of TMB substrate (Product # 34028) for 30 minutes at room temperature in the dark. The plate was stopped with 0.16M sulfuric acid (Product # N600). Absorbances were read on a spectrophotometer at 450-550 nm.



View more figures on thermofisher.com

Dot blot (1)

International journal of molecular sciences	Year 2021
-Hexachlorocyclohexane Drives Carcinogenesis in the Human Normal Bronchial Epithelium Cell Line BEAS-2B.	Species Human
"Published figure using EGF monoclonal antibody (Product # M805) in Dot Blot"	
Authors: Rubini E,Minacori M,Paglia G,Altieri F,Chichiarelli S,Romaniello D,Eufemi M	

For Research Use Only. Not for use in diagnostic procedures. Not for resale without express authorization. Products are warranted to operate or perform substantially in conformance with published Product specifications in effect at the time of sale, as set forth in the Production documentation, specifications and/or accompanying package inserts ("Documentation"). No claim of suitability for use in applications regulated by FDA is made. The warranty provided herein is valid only when used by properly trained individuals. Unless otherwise stated in the Documentation, this warranty is limited to one year from date of shipment when the Product is subjected to normal, proper and intended usage. This warranty does not extend to anyone other than the Buyer. Any model or sample furnished to Buyer is merely illustrative of the general type and quality of goods and does not represent that any Product will conform to such model or sample. NO OTHER WARRANTIES, EXPRESS OR IMPLIED, ARE GRANTED INCLUDING WITHOUT LIMITATION, IMPLIED WARRANTIES OF MERCHANTABILITY, FITNESS FOR ANY PARTICULAR PURPOSE, OR NON INFRINGEMENT. BUYER'S EXCLUSIVE REMEDY FOR NON-CONFORMING PRODUCTS DURING THE WARRANTY PERIOD IS LIMITED TO REPAIR, REPLACEMENT OF OR REFUND FOR THE NON-CONFORMING PRODUCT(S) AT SELLER'S SOLE OPTION. THERE IS NO OBLIGATION TO REPAIR, REPLACE OR REFUND FOR PRODUCTS AS THE RESULT OF (I) ACCIDENT, DISASTER OR EVENT OF FORCE MAJEURE, (II) MISUSE, FAULT OR NEGLIGENCE OF OR BY BUYER, (III) USE OF THE PRODUCTS IN A MANNER FOR WHICH THEY WERE NOT DESIGNED, OR (IV) IMPROPER STORAGE AND HANDLING OF THE PRODUCTS. Unless otherwise expressly stated on the Product or in the documentation accompanying the Product, the Product is intended for research only and is not to be used for any other purpose, including without limitation, unauthorized commercial uses, in vitro diagnostic uses, ex vivo or in vivo therapeutic uses, or any type of consumption by or application to human or animals.