

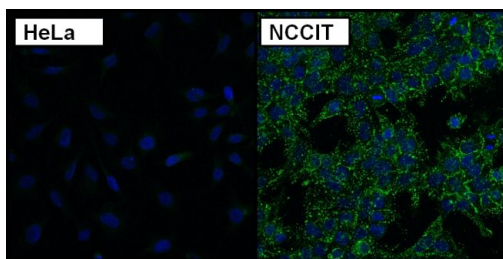
# SSEA3 Monoclonal Antibody (MC-631)

| Product Details    |   |
|--------------------|---|
| Size               | 100 µg  |
| Species Reactivity | Human   |
| Host/Isotope       | Rat / IgM   |
| Class              | Monoclonal  |
| Type               | Antibody  |
| Clone              | MC-631  |
| Conjugate          | Unconjugated  |
| Immunogen          | Fischer rat immunized with 4-8 cell stage mouse embryos |
| Form               | Liquid  |
| Concentration      | 1 mg/mL   |
| Purification       | Affinity chromatography - MBP                           |
| Storage buffer     | potassium phosphate with 0.15M NaCl, 1mg/mL BSA         |
| Contains           | 0.05% sodium azide                                      |
| Storage Conditions | -20° C, Avoid Freeze/Thaw Cycles                        |
| RRID               | AB_2536682  |

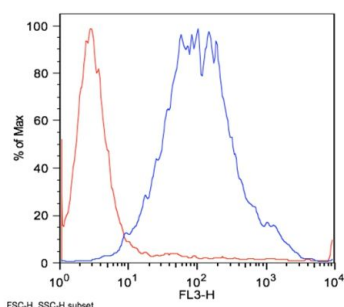
| Applications              | Tested | Dilution      | Published     |
|---------------------------|--------|---------------|---------------|
| Flow Cytometry (Flow)     | ✓      | 1:100         | 1 Publication |
| Immunocytochemistry (ICC) | ✓      | 1:100-1:500   |               |
| Immunofluorescence (IF)   | ✓      | 1:100 - 1:500 |               |

## Product Images For SSEA3 Monoclonal Antibody (MC-631)

### SSEA3 Antibody (MA1-020) in IF



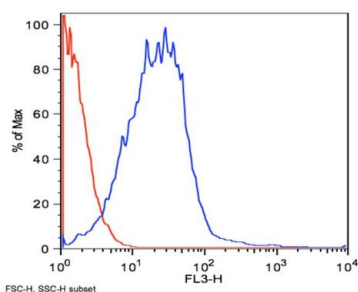
Immunofluorescent analysis of SSEA-3 using anti-SSEA-3 monoclonal antibody (Product # MA1-020) shows expression in human teratocarcinoma NCCIT cells (shown in green) but not in negative control HeLa cells. Formalin fixed cells were permeabilized with 0.1% Triton X-100 in TBS for 10 minutes at room temperature. Cells were blocked with 1% Blocker BSA (Product # 37525) for 15 minutes at room temperature. Cells were probed with a rat monoclonal antibody recognizing SSEA-3 (Product # MA1-020), at a dilution of 1:50 for at least 1 hour at room temperature. Cells were washed with PBS and incubated with a goat-anti-rat IgM secondary antibody at a dilution of 1:400 for 30 minutes at room temperature. Nuclei (blue) were stained with Hoechst 33342 dye (Product # 62249). Images were taken on a Thermo Scientific ArrayScan at 20X magnification.



| Sample    | %    |
|-----------|------|
| SSEA-3 TF | 82.5 |
| PE        | 76.8 |

### SSEA3 Antibody (MA1-020) in Flow

Flow cytometry analysis of SSEA-3 using anti-SSEA-3 monoclonal antibody (Product # MA1-020) shows positive staining of H9 human embryonic stem cells (blue line). H9 human embryonic stem cells were harvested, fixed and washed with PBS. Cells were incubated with anti-SSEA-3 monoclonal antibody (Product # MA1-020) or control at a 1:100 dilution for 1 hour on ice, followed by 30 min incubation with fluorescein conjugated secondary antibody. 100,000 cells were stained for each sample.



| Sample     | %    |
|------------|------|
| SSEA-3 TF3 | 87   |
| PE 3       | 84.8 |

### SSEA3 Antibody (MA1-020) in Flow

Flow cytometry analysis of SSEA-3 using anti-SSEA-3 monoclonal antibody (Product # MA1-020) shows positive staining of HEL 11.4 iPS cells (blue line). HEL 11.4 iPS cells were harvested, fixed and washed with PBS. Cells were incubated with anti-SSEA-3 monoclonal antibody (Product # MA1-020) or control at a 1:100 dilution for 1 hour on ice, followed by 30 min incubation with fluorescein conjugated secondary antibody. 100,000 cells were stained for each sample.

View more figures on [thermofisher.com](http://thermofisher.com)

## Flow Cytometry (1)

Proceedings of the National Academy of Sciences of the United States of America

### Stage-specific embryonic antigen-3 (SSEA-3) and 3GalT5 are cancer specific and significant markers for breast cancer stem cells.

"MA1020 was used in flow cytometry to find that breast cancer stem cells isolated with CD44(+)/CD24(-/lo)SSEA-3(+) or ESA(hi)PROCR(hi)SSEA-3(+) markers have higher tumorigenicity than those with conventional markers"

Authors: Cheung SK, Chuang PK, Huang HW, Hwang-Verslues WW, Cho CH, Yang WB, Shen CN, Hsiao M, Hsu TL, Chang CF, Wong CH

**Species**  
Not Applicable

**Dilution**  
Not Cited

**Year**  
2016

For Research Use Only. Not for use in diagnostic procedures. Not for resale without express authorization. Products are warranted to operate or perform substantially in conformance with published Product specifications in effect at the time of sale, as set forth in the Production documentation, specifications and/or accompanying package inserts ("Documentation"). No claim of suitability for use in applications regulated by FDA is made. The warranty provided herein is valid only when used by properly trained individuals. Unless otherwise stated in the Documentation, this warranty is limited to one year from date of shipment when the Product is subjected to normal, proper and intended usage. This warranty does not extend to anyone other than the Buyer. Any model or sample furnished to Buyer is merely illustrative of the general type and quality of goods and does not represent that any Product will conform to such model or sample. NO OTHER WARRANTIES, EXPRESS OR IMPLIED, ARE GRANTED INCLUDING WITHOUT LIMITATION, IMPLIED WARRANTIES OF MERCHANTABILITY, FITNESS FOR ANY PARTICULAR PURPOSE, OR NON INFRINGEMENT. BUYER'S EXCLUSIVE REMEDY FOR NON-CONFORMING PRODUCTS DURING THE WARRANTY PERIOD IS LIMITED TO REPAIR, REPLACEMENT OF OR REFUND FOR THE NON-CONFORMING PRODUCT(S) AT SELLER'S SOLE OPTION. THERE IS NO OBLIGATION TO REPAIR, REPLACE OR REFUND FOR PRODUCTS AS THE RESULT OF (I) ACCIDENT, DISASTER OR EVENT OF FORCE MAJEURE, (II) MISUSE, FAULT OR NEGLIGENCE OF OR BY BUYER, (III) USE OF THE PRODUCTS IN A MANNER FOR WHICH THEY WERE NOT DESIGNED, OR (IV) IMPROPER STORAGE AND HANDLING OF THE PRODUCTS. Unless otherwise expressly stated on the Product or in the documentation accompanying the Product, the Product is intended for research only and is not to be used for any other purpose, including without limitation, unauthorized commercial uses, in vitro diagnostic uses, ex vivo or in vivo therapeutic uses, or any type of consumption by or application to human or animals.