

TRA-1-60 Monoclonal Antibody (TRA-1-60), DyLight 550

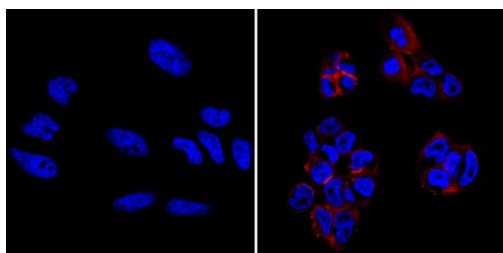
Product Details	
Size	100 µL
Species Reactivity	Human
Host/Isotope	Mouse / IgM
Class	Monoclonal
Type	Antibody
Clone	TRA-1-60
Conjugate	DyLight® 550
Immunogen	Human embryonal carcinoma cell line 2102Ep.
Form	Liquid
Concentration	1 mg/mL
Purification	Affinity chromatography - MBP
Storage buffer	PBS with proprietary stabilizer
Contains	0.02% sodium azide
Storage Conditions	4° C, do not freeze
RRID	AB_2536701

Applications	Tested	Dilution	Published
Immunocytochemistry (ICC)	✓	1:10-1:100	
Immunofluorescence (IF)	✓	1:10-1:100	

Product Specific Information

MA1-023-D550 has been successfully used in ICC/IF applications on human samples.

Product Images For TRA-1-60 Monoclonal Antibody (TRA-1-60), DyLight 550



TRA-1-60 Antibody (MA1-023-D550) in IF

Immunofluorescent analysis of TRA-1-60 (red) showing membrane staining of NCCIT cells (right panel) compared to negative HeLa cell control (left panel). The cells were fixed with formalin for 15 minutes, washed, and then blocked with 3% BSA-PBS for 30 minutes at room temperature. Cells were probed with a DyLight 550-conjugated TRA-1-60 monoclonal antibody (Product # MA1-023-D550) in 3% BSA-PBS at a dilution of 1:20 and incubated for 1 hour at 37C in the dark. Nuclei (both panels, blue) were stained with DAPI. Images were taken at 60X magnification.

For Research Use Only. Not for use in diagnostic procedures. Not for resale without express authorization. Products are warranted to operate or perform substantially in conformance with published Product specifications in effect at the time of sale, as set forth in the Production documentation, specifications and/or accompanying package inserts ("Documentation"). No claim of suitability for use in applications regulated by FDA is made. The warranty provided herein is valid only when used by properly trained individuals. Unless otherwise stated in the Documentation, this warranty is limited to one year from date of shipment when the Product is subjected to normal, proper and intended usage. This warranty does not extend to anyone other than the Buyer. Any model or sample furnished to Buyer is merely illustrative of the general type and quality of goods and does not represent that any Product will conform to such model or sample. NO OTHER WARRANTIES, EXPRESS OR IMPLIED, ARE GRANTED INCLUDING WITHOUT LIMITATION, IMPLIED WARRANTIES OF MERCHANTABILITY, FITNESS FOR ANY PARTICULAR PURPOSE, OR NON INFRINGEMENT. BUYER'S EXCLUSIVE REMEDY FOR NON-CONFORMING PRODUCTS DURING THE WARRANTY PERIOD IS LIMITED TO REPAIR, REPLACEMENT OF OR REFUND FOR THE NON-CONFORMING PRODUCT(S) AT SELLER'S SOLE OPTION. THERE IS NO OBLIGATION TO REPAIR, REPLACE OR REFUND FOR PRODUCTS AS THE RESULT OF (I) ACCIDENT, DISASTER OR EVENT OF FORCE MAJEURE, (II) MISUSE, FAULT OR NEGLIGENCE OF OR BY BUYER, (III) USE OF THE PRODUCTS IN A MANNER FOR WHICH THEY WERE NOT DESIGNED, OR (IV) IMPROPER STORAGE AND HANDLING OF THE PRODUCTS. Unless otherwise expressly stated on the Product or in the documentation accompanying the Product, the Product is intended for research only and is not to be used for any other purpose, including without limitation, unauthorized commercial uses, in vitro diagnostic uses, ex vivo or in vivo therapeutic uses, or any type of consumption by or application to human or animals.