

Lamin B1 Monoclonal Antibody (119D5-F1)

Product Details	
Size	100 µL
Species Reactivity	Bovine, Dog, Human, Mouse, Sheep, Rabbit, Rat
Published Species	Bovine, Human
Host/Isotope	Mouse / IgG1, kappa
Class	Monoclonal
Type	Antibody
Clone	119D5-F1
Conjugate	Unconjugated
Immunogen	Purified rat liver lamin.
Form	Liquid
Concentration	1 mg/mL
Purification	purified
Storage buffer	PBS
Contains	0.09% sodium azide
Storage Conditions	4°C or -20°C if preferred
RRID	AB_2281281

Applications	Tested	Dilution	Published
ChIP assay (ChIP)	-		1 Publication
Western Blot (WB)	✓	1:100-1:1000	3 Publications
ELISA (ELISA)	✓	Assay Dependent	
Flow Cytometry (Flow)	✓	1:100-1:200	
Immunocytochemistry (ICC)	✓	1:100-1:200	
Immunofluorescence (IF)	✓	1:100-1:200	
Immunohistochemistry (Frozen) (IHC (F))	✓	1:100-1:200	

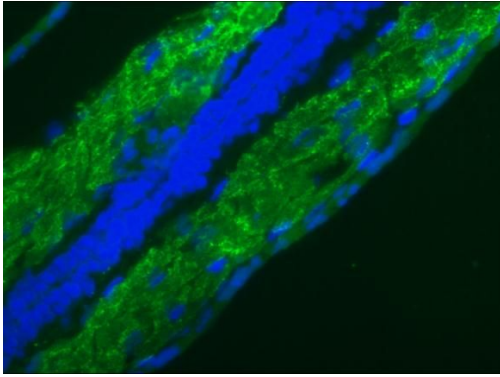
Product Specific Information

MA1-06103 detects lamin B in human, mouse, rat, bovine, ovine, rabbit, zebrafish, and canine samples.

MA1-06103 has successfully been used in immunocytochemistry, immunohistochemistry, ELISA, and flow cytometry procedures.

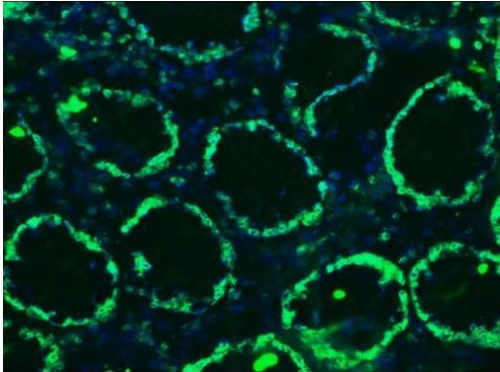
The MA1-06103 immunogen is purified rat liver lamins.

Product Images For Lamin B1 Monoclonal Antibody (119D5-F1)



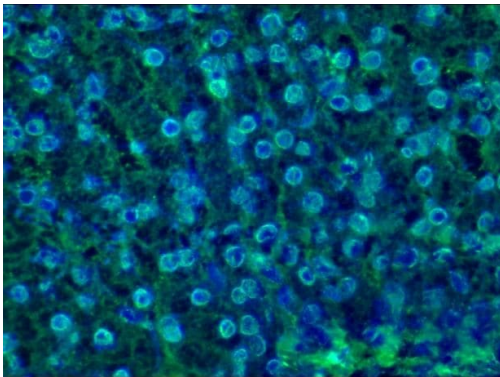
Lamin B1 Antibody (MA1-06103) in IF

Immunofluorescent analysis of 9 days old zebrafish embryo using Lamin B1 monoclonal antibody (Product # MA1-06103).



Lamin B1 Antibody (MA1-06103) in IHC (F)

Immunohistochemistry on frozen sections of human colon showing nuclear lamina staining in epithelial and connective tissue cells stained with Lamin B1 monoclonal antibody (Product # MA1-06103).



Lamin B1 Antibody (MA1-06103) in IHC (F)

Immunohistochemistry on frozen sections of swine liver showing nuclear lamina staining in hepatocytes stained with Lamin B1 monoclonal antibody (Product # MA1-06103).

[View more figures on thermofisher.com](https://www.thermofisher.com)

4 References

ChIP assay (1)

Journal of cell science

MacroH2A histone variants maintain nuclear organization and heterochromatin architecture.

"MA106103 was used in ChIP assay, proximity ligation assay, and western blot to show that macroH2A variants aid in maintaining nuclear organization and heterochromatin architecture"

Authors: Douet J, Corujo D, Malinverni R, Renaud J, Sansoni V, Posavec Marjanovi M, Cantariño N, Valero V, Mongelard F, Bouvet P, Imhof A, Thiry M, Buschbeck M

Species
Human

Dilution
Not Cited

Year
2017

Western Blot (3)

Cancer research

Immunoregulatory Protein B7-H3 Reprograms Glucose Metabolism in Cancer Cells by ROS-Mediated Stabilization of HIF1.

"MA1-06103 was used in western blot to study the reprogramming of glucose metabolism in cancer cells by ROS-mediated stabilization of HIF1alpha via the immunoregulatory protein B7-H3"

Authors: Lim S, Liu H, Madeira da Silva L, Arora R, Liu Z, Phillips JB, Schmitt DC, Vu T, McClellan S, Lin Y, Lin W, Piazza GA, Fodstad O, Tan M

Species
Not Applicable

Dilution
Not Cited

Year
2016

PloS one

Comparative 2D-DIGE proteomic analysis of bovine mammary epithelial cells during lactation reveals protein signatures for lactation persistency and milk yield.

"MA1-06103 was used in western blot to use 2D-DIGE and mass spectrometry to identify the protein changes in mammary epithelial cells"

Authors: Janjanam J, Singh S, Jena MK, Varshney N, Kola S, Kumar S, Kaushik JK, Grover S, Dang AK, Mukesh M, Prakash BS, Mohanty AK

Species
Bovine

Dilution
Not Cited

Year
2015

[View more WB references on thermofisher.com](#)

For Research Use Only. Not for use in diagnostic procedures. Not for resale without express authorization. Products are warranted to operate or perform substantially in conformance with published Product specifications in effect at the time of sale, as set forth in the Production documentation, specifications and/or accompanying package inserts ("Documentation"). No claim of suitability for use in applications regulated by FDA is made. The warranty provided herein is valid only when used by properly trained individuals. Unless otherwise stated in the Documentation, this warranty is limited to one year from date of shipment when the Product is subjected to normal, proper and intended usage. This warranty does not extend to anyone other than the Buyer. Any model or sample furnished to Buyer is merely illustrative of the general type and quality of goods and does not represent that any Product will conform to such model or sample. NO OTHER WARRANTIES, EXPRESS OR IMPLIED, ARE GRANTED INCLUDING WITHOUT LIMITATION, IMPLIED WARRANTIES OF MERCHANTABILITY, FITNESS FOR ANY PARTICULAR PURPOSE, OR NON INFRINGEMENT. BUYER'S EXCLUSIVE REMEDY FOR NON-CONFORMING PRODUCTS DURING THE WARRANTY PERIOD IS LIMITED TO REPAIR, REPLACEMENT OF OR REFUND FOR THE NON-CONFORMING PRODUCT(S) AT SELLER'S SOLE OPTION. THERE IS NO OBLIGATION TO REPAIR, REPLACE OR REFUND FOR PRODUCTS AS THE RESULT OF (I) ACCIDENT, DISASTER OR EVENT OF FORCE MAJEURE, (II) MISUSE, FAULT OR NEGLIGENCE OF OR BY BUYER, (III) USE OF THE PRODUCTS IN A MANNER FOR WHICH THEY WERE NOT DESIGNED, OR (IV) IMPROPER STORAGE AND HANDLING OF THE PRODUCTS. Unless otherwise expressly stated on the Product or in the documentation accompanying the Product, the Product is intended for research only and is not to be used for any other purpose, including without limitation, unauthorized commercial uses, in vitro diagnostic uses, ex vivo or in vivo therapeutic uses, or any type of consumption by or application to human or animals.