

# Clathrin Heavy Chain Monoclonal Antibody (X22)

Product Details	
Size	100 µL
Species Reactivity	Bovine, Hamster, Human, Mouse, Non-human primate, Rat
Published Species	Dog, Pig, Rat, Non-human primate, Hamster, Bovine, Human, Mouse
Host/Isotope	Mouse / IgG1
Class	Monoclonal
Type	Antibody
Clone	X22
Conjugate	Unconjugated
Immunogen	Purified human brain clathrin heavy chain.
Form	Liquid
Concentration	6 mg/mL
Purification	Protein A
Storage buffer	PBS
Contains	0.05% sodium azide
Storage Conditions	-20° C, Avoid Freeze/Thaw Cycles
RRID	AB_2083179

Applications	Tested Dilution	Publications
Flow Cytometry (Flow)	1/200	-
Immunocytochemistry (ICC)	Assay dependent	51 Publications
Immunofluorescence (IF)	1:1,000	6 Publications
Immunohistochemistry (IHC)	1:100	9 Publications
Immunomicroscopy (IM)	Assay Dependent	-
Immunoprecipitation (IP)	Assay dependent	3 Publications
Western Blot (WB)	1:100-1:500	18 Publications
Miscellaneous PubMed (Misc)	-	1 Publication
Neutralization (Neu)	-	2 Publications

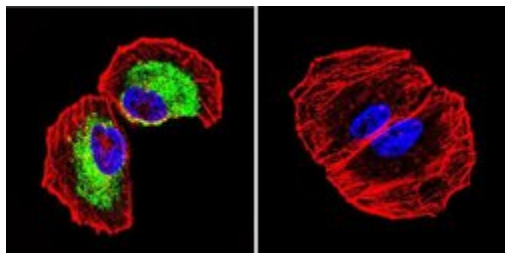
## Product Specific Information

MA1-065 detects clathrin heavy chain in non-human primate, bovine, human, rat and mouse tissues as well as hamster (CHO) cells.

MA1-065 has been successfully used in Western blot, immunofluorescence, immunocytochemistry, and immunoprecipitation procedures. By Western blot, this antibody recognizes a single ~180 kDa protein representing the clathrin heavy chain from bovine brain extract. Immunoprecipitation of triskelions with MA1-065 allows both the clathrin heavy chain and the associated light chain polypeptides to be examined.

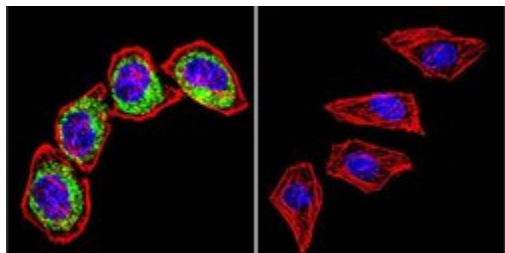
The MA1-065 immunogen is purified human brain clathrin heavy chain. Electron microscopy and proteolysis mapping demonstrate that MA1-065 binding occurs towards the central hub of the triskelion, N-terminal to the light chain binding regions.

## Product Images For Clathrin Heavy Chain Monoclonal Antibody (X22)



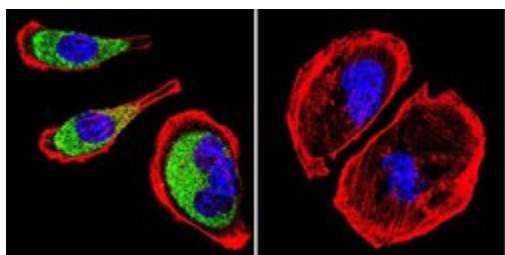
### Clathrin Heavy Chain Antibody (MA1-065) in IF

Immunofluorescent analysis of Clathrin, Heavy chain using Anti-Clathrin, Heavy chain Monoclonal Antibody (X22) (Product # MA1-065) shows staining in NCI-H460 Cells. Clathrin, Heavy chain staining (green), F-Actin staining with Phalloidin (red) and nuclei with DAPI (blue) is shown. Cells were grown on chamber slides and fixed with formaldehyde prior to staining. Cells were probed without (control) or with or an antibody recognizing Clathrin, Heavy chain (Product # MA1-065) at a dilution of 1: 200 over night at 4°C, washed with PBS and incubated with a DyLight-488 conjugated secondary antibody (Product # 35503, Goat Anti-Mouse). Images were taken at 60X magnification.



### Clathrin Heavy Chain Antibody (MA1-065) in IF

Immunofluorescent analysis of Clathrin, Heavy chain using Anti-Clathrin, Heavy chain Monoclonal Antibody (X22) (Product # MA1-065) shows staining in HeLa Cells. Clathrin, Heavy chain staining (green), F-Actin staining with Phalloidin (red) and nuclei with DAPI (blue) is shown. Cells were grown on chamber slides and fixed with formaldehyde prior to staining. Cells were probed without (control) or with or an antibody recognizing Clathrin, Heavy chain (Product # MA1-065) at a dilution of 1: 200 over night at 4°C, washed with PBS and incubated with a DyLight-488 conjugated secondary antibody (Product # 35503, Goat Anti-Mouse). Images were taken at 60X magnification.



### Clathrin Heavy Chain Antibody (MA1-065) in IF

Immunofluorescent analysis of Clathrin, Heavy chain using Anti-Clathrin, Heavy chain Monoclonal Antibody (X22) (Product # MA1-065) shows staining in U251 Cells. Clathrin, Heavy chain staining (green), F-Actin staining with Phalloidin (red) and nuclei with DAPI (blue) is shown. Cells were grown on chamber slides and fixed with formaldehyde prior to staining. Cells were probed without (control) or with or an antibody recognizing Clathrin, Heavy chain (Product # MA1-065) at a dilution of 1: 200 over night at 4°C, washed with PBS and incubated with a DyLight-488 conjugated secondary antibody (Product # 35503, Goat Anti-Mouse). Images were taken at 60X magnification.

[View more figures on thermofisher.com](https://www.thermofisher.com)

## Immunofluorescence (6)

Frontiers in molecular neuroscience

### An Aberrant Phosphorylation of Amyloid Precursor Protein Tyrosine Regulates Its Trafficking and the Binding to the Clathrin Endocytic Complex in Neural Stem Cells of Alzheimer's Disease Patients.

"MA1065 was used in immunocytochemistry and western blot to study amyloid precursor protein Tyr phosphorylation in mouse model of Alzheimer's disease"

Authors: Poulsen ET, Iannuzzi F, Rasmussen HF, Maier TJ, Enghild JJ, Jørgensen AL, Matrone C

**Species**

Not Applicable  
Pig

**Dilution**

Not Cited  
Not Cited

**Year**

2019

Cell

### A Flat BAR Protein Promotes Actin Polymerization at the Base of Clathrin-Coated Pits.

"Published figure using Clathrin Heavy Chain monoclonal antibody (Product # MA1-065) in Immunofluorescence"

Authors: Almeida-Souza L, Frank RAW, García-Nafria J, Colussi A, Gunawardana N, Johnson CM, Yu M, Howard G, Andrews B, Vallis Y, McMahon HT

**Species**

Not Applicable

**Dilution**

Not Cited

**Year**

2018

[View more IF references on thermofisher.com](#)

## Immunoprecipitation (3)

Frontiers in molecular neuroscience

### An Aberrant Phosphorylation of Amyloid Precursor Protein Tyrosine Regulates Its Trafficking and the Binding to the Clathrin Endocytic Complex in Neural Stem Cells of Alzheimer's Disease Patients.

"MA1065 was used in immunocytochemistry and western blot to study amyloid precursor protein Tyr phosphorylation in mouse model of Alzheimer's disease"

Authors: Poulsen ET, Iannuzzi F, Rasmussen HF, Maier TJ, Enghild JJ, Jørgensen AL, Matrone C

**Species**

Not Applicable  
Pig

**Dilution**

Not Cited  
Not Cited

**Year**

2019

Journal of cell science

### Lack of CD2AP disrupts Glut4 trafficking and attenuates glucose uptake in podocytes.

"MA1-065 was used in Immunoprecipitation to investigate the role of CD2-associated protein in insulin-dependent glucose transporter 4 trafficking and glucose uptake."

Authors: Tolvanen TA, Dash SN, Polianskyte-Prause Z, Dumont V, Lehtonen S

**Species**

Mouse

**Dilution**

Not Cited

**Year**

2015

[View more IP references on thermofisher.com](#)

## More applications with references on thermofisher.com

WB (18) IHC (9) ICC (51) Misc (1) Neu (2)

For Research Use Only. Not for use in diagnostic procedures. Not for resale without express authorization. Products are warranted to operate or perform substantially in conformance with published Product specifications in effect at the time of sale, as set forth in the Production documentation, specifications and/or accompanying package inserts ("Documentation"). No claim of suitability for use in applications regulated by FDA is made. The warranty provided herein is valid only when used by properly trained individuals. Unless otherwise stated in the Documentation, this warranty is limited to one year from date of shipment when the Product is subjected to normal, proper and intended usage. This warranty does not extend to anyone other than the Buyer. Any model or sample furnished to Buyer is merely illustrative of the general type and quality of goods and does not represent that any Product will conform to such model or sample. NO OTHER WARRANTIES, EXPRESS OR IMPLIED, ARE GRANTED INCLUDING WITHOUT LIMITATION, IMPLIED WARRANTIES OF MERCHANTABILITY, FITNESS FOR ANY PARTICULAR PURPOSE, OR NON INFRINGEMENT. BUYER'S EXCLUSIVE REMEDY FOR NON-CONFORMING PRODUCTS DURING THE WARRANTY PERIOD IS LIMITED TO REPAIR, REPLACEMENT OF OR REFUND FOR THE NON-CONFORMING PRODUCT(S) AT SELLER'S SOLE OPTION. THERE IS NO OBLIGATION TO REPAIR, REPLACE OR REFUND FOR PRODUCTS AS THE RESULT OF (I) ACCIDENT, DISASTER OR EVENT OF FORCE MAJEURE, (II) MISUSE, FAULT OR NEGLIGENCE OF OR BY BUYER, (III) USE OF THE PRODUCTS IN A MANNER FOR WHICH THEY WERE NOT DESIGNED, OR (IV) IMPROPER STORAGE AND HANDLING OF THE PRODUCTS. Unless otherwise expressly stated on the Product or in the documentation accompanying the Product, the Product is intended for research only and is not to be used for any other purpose, including without limitation, unauthorized commercial uses, in vitro diagnostic uses, ex vivo or in vivo therapeutic uses, or any type of consumption by or application to human or animals.