

# Clathrin Heavy Chain Monoclonal Antibody (X22), Alexa Fluor™ 488

## Product Details

Size	50 µL
Species Reactivity	Bovine, Hamster, Human, Mouse, Non-human primate, Rat
Host/Isotype	Mouse / IgG1
Class	Monoclonal
Type	Antibody
Clone	X22
Conjugate	Alexa Fluor™ 488
Excitation/Emission Max	499/520 nm
Immunogen	Purified human brain clathrin heavy chain
Form	Liquid
Concentration	1 mg/mL
Purification	Protein A
Storage buffer	PBS, pH 7.4, with 1mg/mL BSA
Contains	0.05% sodium azide
Storage conditions	4° C, store in dark, DO NOT FREEZE!
RRID	AB_2662916

Applications	Tested Dilution	Publications
Western Blot (WB)	-	4 Publications
Immunocytochemistry (ICC/IF)	1-10 µg/mL	3 Publications
Immunoprecipitation (IP)	-	2 Publications

## Product Specific Information

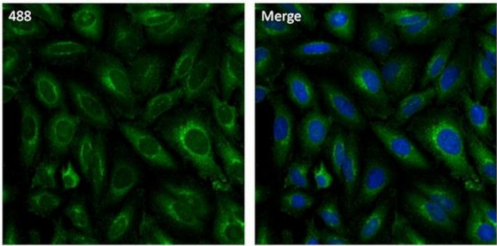
MA1065A488 detects clathrin heavy chain in non-human primate, bovine, human, rat and mouse tissues as well as hamster (CHO) cells.

The MA1065A488 immunogen is purified human brain clathrin heavy chain. Electron microscopy and proteolysis mapping demonstrate that MA1065A488 binding occurs towards the central hub of the triskelion, N-terminal to the light chain binding regions.

Product Images For Clathrin Heavy Chain Monoclonal Antibody (X22), Alexa Fluor™ 488

Clathrin Heavy Chain Antibody (MA1-065-A488) in ICC/IF

Immunofluorescent analysis of Clathrin Heavy Chain (green) in HeLa cells. The cells were fixed with 4% Paraformaldehyde in PBS for 15 minutes at room temperature, and blocked with 3% BSA in PBS (Product # 37525) for 30 minutes at room temperature. Cells were stained with a Clathrin Heavy Chain Monoclonal Antibody, AlexaFluor 488 conjugate (Product # MA1-065-A488) at a dilution of 5 µg/mL in blocking buffer for 1 hour at room temperature protected from light. Nuclei (blue) were stained with Hoechst Dye (Product # 62249) at a dilution of 1:10,000 in blocking buffer. Images were taken on a Thermo Scientific ToxInsight Instrument at 20X magnification.



View more figures on [thermofisher.com](https://thermofisher.com)

## Western Blot (4)

The Journal of biological chemistry

### Surface Toll-like receptor 3 expression in metastatic intestinal epithelial cells induces inflammatory cytokine production and promotes invasiveness.

Year  
2017

"Published figure using Clathrin Heavy Chain monoclonal antibody (Product # MA1-065-A488) in Western Blot"

Authors: Bugge M,Bergstrom B,Eide OK,Solli H,Kjønstad IF,Stenvik J,Espevik T,Nilsen NJ

Scientific reports

### ROCK1 is a novel Rac1 effector to regulate tubular endocytic membrane formation during clathrin-independent endocytosis.

Year  
2017

"Published figure using Clathrin Heavy Chain monoclonal antibody (Product # MA1-065-A488) in Western Blot"

Authors: Soriano-Castell D,Chavero A,Rentero C,Bosch M,Vidal-Quadras M,Pol A,Enrich C,Tebar F

[View more WB references on thermofisher.com](#)

## Immunocytochemistry (3)

Frontiers in molecular neuroscience

### An Aberrant Phosphorylation of Amyloid Precursor Protein Tyrosine Regulates Its Trafficking and the Binding to the Clathrin Endocytic Complex in Neural Stem Cells of Alzheimer's Disease Patients.

Year  
2023

"Published figure using Clathrin Heavy Chain monoclonal antibody (Product # MA1-065-A488) in Immunoprecipitation"

Authors: Poulsen ET,Iannuzzi F,Rasmussen HF,Maier TJ,Engild JJ,Jørgensen AL,Matrone C

Nature neuroscience

### Central role for PICALM in amyloid- blood-brain barrier transcytosis and clearance.

Year  
2015

"Published figure using Clathrin Heavy Chain monoclonal antibody (Product # MA1-065-A488) in Immunofluorescence"

Authors: Zhao Z,Sagare AP,Ma Q,Halliday MR,Kong P,Kisler K,Winkler EA,Ramanathan A,Kanekiyo T,Bu G,Owens NC,Rege SV,Si G,Ahuja A,Zhu D,Miller CA,Schneider JA,Maeda M,Maeda T,Sugawara T,Ichida JK,Zlokovic BV

[View more ICC/IF references on thermofisher.com](#)

## More applications with references on thermofisher.com

## IP (2)

For Research Use Only. Not for use in diagnostic procedures. Not for resale without express authorization. Products are warranted to operate or perform substantially in conformance with published Product specifications in effect at the time of sale, as set forth in the Production documentation, specifications and/or accompanying package inserts ("Documentation"). No claim of suitability for use in applications regulated by FDA is made. The warranty provided herein is valid only when used by properly trained individuals. Unless otherwise stated in the Documentation, this warranty is limited to one year from date of shipment when the Product is subjected to normal, proper and intended usage. This warranty does not extend to anyone other than the Buyer. Any model or sample furnished to Buyer is merely illustrative of the general type and quality of goods and does not represent that any Product will conform to such model or sample. NO OTHER WARRANTIES, EXPRESS OR IMPLIED, ARE GRANTED INCLUDING WITHOUT LIMITATION, IMPLIED WARRANTIES OF MERCHANTABILITY, FITNESS FOR ANY PARTICULAR PURPOSE, OR NON-INFRINGEMENT. BUYER'S EXCLUSIVE REMEDY FOR NON-CONFORMING PRODUCTS DURING THE WARRANTY PERIOD IS LIMITED TO REPAIR, REPLACEMENT OF OR REFUND FOR THE NON-CONFORMING PRODUCT(S) AT SELLER'S SOLE OPTION. THERE IS NO OBLIGATION TO REPAIR, REPLACE OR REFUND FOR PRODUCTS AS THE RESULT OF (i) ACCIDENT, DISASTER OR EVENT OF FORCE MAJEURE, (ii) MISUSE, FAULT OR NEGLIGENCE OF OR BY BUYER, (iii) USE OF THE PRODUCTS IN A MANNER FOR WHICH THEY WERE NOT DESIGNED, OR (iv) IMPROPER STORAGE AND HANDLING OF THE PRODUCTS. Unless otherwise expressly stated on the Product or in the documentation accompanying the Product, the Product is intended for research only and is not to be used for any other purpose, including without limitation, unauthorized commercial uses, in vitro diagnostic uses, ex vivo or in vivo therapeutic uses, or any type of consumption by or application to human or animals.