

Perlecan Monoclonal Antibody (A7L6)

Product Details	
Size	100 µL
Species Reactivity	Bovine, Fish, Human, Mouse, Rat
Published Species	Bovine, Mouse, Human
Host/Isotype	Rat / IgG2a
Class	Monoclonal
Type	Antibody
Clone	A7L6
Conjugate	Unconjugated
Immunogen	High molecular mass material derived from the Engelbreth-Holm-Swarm (EHS) tumor matrix containing laminin, entactin and HSPG.
Form	Liquid
Concentration	1 mg/mL
Purification	purified
Storage buffer	PBS
Contains	0.09% sodium azide
Storage conditions	Store at 4°C short term. For long term storage, store at -20°C, avoiding freeze/thaw cycles.
RRID	AB_559394

Applications	Tested Dilution	Publications
Western Blot (WB)	1:100-1:1,000	1 Publication
Immunohistochemistry (IHC)	-	8 Publications
Immunohistochemistry (Paraffin) (IHC (P))	1:25-1:200	1 Publication
Immunohistochemistry (Frozen) (IHC (F))	1:25-1:200	-
Immunocytochemistry (ICC/IF)	1:25-1:200	0 Publication
Immunoprecipitation (IP)	Assay-dependent	-

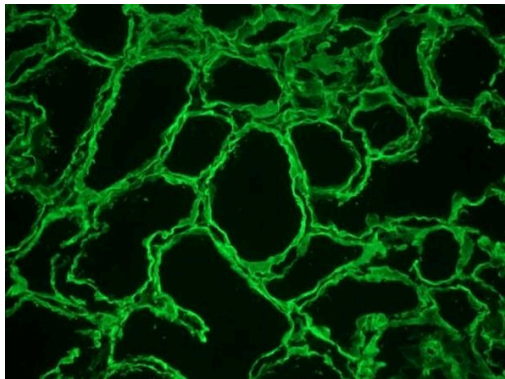
Product Specific Information

MA1-06821 detects large heparan sulphate proteoglycan in human, mouse, bovine, cod, wolffish, and rat samples.

MA1-06821 has sucessfully been used in Western blotting, immunocytochemistry, immunoprecipitation, and immunohistochemistry procedures. By Western blot it detects a >400 kDa band representing large HSPG.

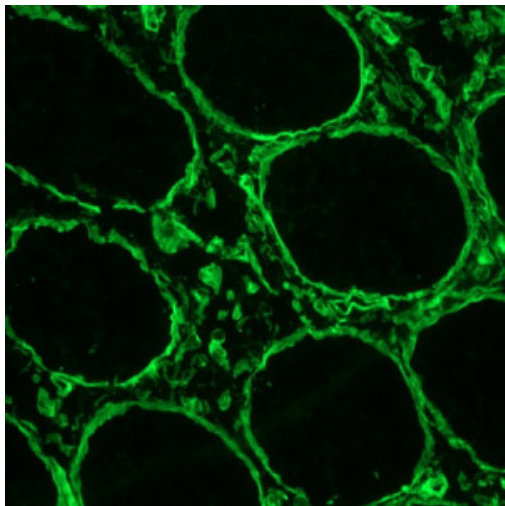
The MA1-06821 immunogen is a high molecular mass material derived from the Engelbreth-Holm-Swarm (EHS) tumor matrix containing laminin, entactin and HSPG.

Product Images For Perlecan Monoclonal Antibody (A7L6)



Perlecan Antibody (MA1-06821) in IHC (F)

Immunohistochemistry on frozen section of human kidney showing strong reactivity in the extracellular matrix and basement membrane. Stained with Large Heparan Sulphate Proteoglycan monoclonal antibody (Product # MA1-06821).



Perlecan Antibody (MA1-06821) in IHC (F)

Immunohistochemistry analysis of Perlecan in frozen sections of human colon using a Perlecan Monoclonal Antibody (A7L6) (Product # MA1-06821), showing strong reactivity in the extracellular matrix and basement membrane.

Western Blot (1)

Cell reports	Year 2020
Adipocyte-Derived Versican and Macrophage-Derived Biglycan Control Adipose Tissue Inflammation in Obesity.	
"Published figure using Perlecan monoclonal antibody (Product # MA1-06821) in Western Blot"	
Authors: Han CY,Kang I,Harten IA,Gebe JA,Chan CK,Omer M,Alonge KM,den Hartigh LJ,Gomes Kjerulf D,Goodspeed L,Subramanian S,Wang S,Kim F,Birk DE,Wight TN,Chait A	

Immunohistochemistry (8)

Journal of bone and mineral research : the official journal of the American Society for Bone and Mineral Research	Year 2022
Primary Cilia Direct Murine Articular Cartilage Tidemark Patterning Through Hedgehog Signaling and Ambulatory Load.	Species Mouse
"MA1-06821 was used in Immunohistochemistry to provide evidence that primary cilia orchestrate postnatal AC morphogenesis including tidemark topography, zonal matrix composition, and ambulation load responses."	Dilution 1:50
Authors: Rux D,Helbig K,Han B,Cortese C,Koyama E,Han L,Pacifici M	

Development (Cambridge, England)	Year 2020
Ontogenesis of the tear drainage system requires Prickle1-driven polarized basement membrane deposition.	Species Mouse
"MA1-06821 was used in Immunohistochemistry to highlight a crucial role of Prickle1-mediated polarized basement membrane secretion and deposition in PTD elongation."	Dilution 1:500
Authors: Guo D,Ru J,Mao F,Ouyang H,Ju R,Wu K,Liu Y,Liu C	

[View more IHC references on thermofisher.com](#)

Immunohistochemistry (Paraffin) (1)

Clinical, cosmetic and investigational dermatology	Year 2020
Reactivating the extracellular matrix synthesis of sulfated glycosaminoglycans and proteoglycans to improve the human skin aspect and its mechanical properties.	Species Human
"MA106821 was used in immunohistochemistry - paraffin section to show that a defined cosmetic composition results in the production of sulfated glycosaminoglycans and may have anti-ageing benefits"	Dilution 1:100
Authors: Chajra H,Auriol D,Joly F,Pagnon A,Rodrigues M,Allart S,Redziniak G,Lefevre F	

More applications with references on thermofisher.com

For Research Use Only. Not for use in diagnostic procedures. Not for resale without express authorization. Products are warranted to operate or perform substantially in conformance with published Product specifications in effect at the time of sale, as set forth in the Production documentation, specifications and/or accompanying package inserts ("Documentation"). No claim of suitability for use in applications regulated by FDA is made. The warranty provided herein is valid only when used by properly trained individuals. Unless otherwise stated in the Documentation, this warranty is limited to one year from date of shipment when the Product is subjected to normal, proper and intended usage. This warranty does not extend to anyone other than the Buyer. Any model or sample furnished to Buyer is merely illustrative of the general type and quality of goods and does not represent that any Product will conform to such model or sample. NO OTHER WARRANTIES, EXPRESS OR IMPLIED, ARE GRANTED INCLUDING WITHOUT LIMITATION, IMPLIED WARRANTIES OF MERCHANTABILITY, FITNESS FOR ANY PARTICULAR PURPOSE, OR NON-INFRINGEMENT. BUYER'S EXCLUSIVE REMEDY FOR NON-CONFORMING PRODUCTS DURING THE WARRANTY PERIOD IS LIMITED TO REPAIR, REPLACEMENT OF OR REFUND FOR THE NON-CONFORMING PRODUCT(S) AT SELLER'S SOLE OPTION. THERE IS NO OBLIGATION TO REPAIR, REPLACE OR REFUND FOR PRODUCTS AS THE RESULT OF (i) ACCIDENT, DISASTER OR EVENT OF FORCE MAJEURE, (ii) MISUSE, FAULT OR NEGLIGENCE OF OR BY BUYER, (iii) USE OF THE PRODUCTS IN A MANNER FOR WHICH THEY WERE NOT DESIGNED, OR (iv) IMPROPER STORAGE AND HANDLING OF THE PRODUCTS. Unless otherwise expressly stated on the Product or in the documentation accompanying the Product, the Product is intended for research only and is not to be used for any other purpose, including without limitation, unauthorized commercial uses, in vitro diagnostic uses, ex vivo or in vivo therapeutic uses, or any type of consumption by or application to human or animals.