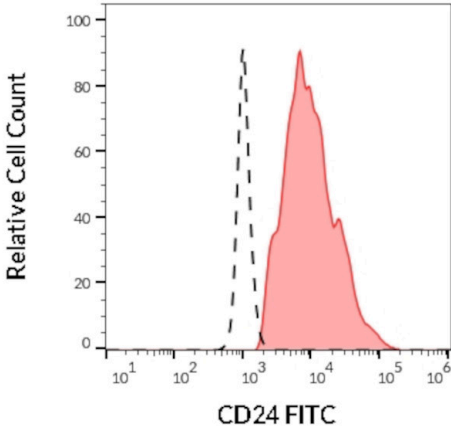


CD24 Monoclonal Antibody (SN3), FITC

| Product Details | |
|-------------------------|---|
| Size | 100 Tests |
| Species Reactivity | Human |
| Published Species | Human |
| Host/Isotype | Mouse / IgG1 |
| Class | Monoclonal |
| Type | Antibody |
| Clone | SN3 |
| Conjugate | FITC |
| Excitation/Emission Max | 498/517 nm |
| Immunogen | Glycoproteins purified from human NALM-1 cell line. |
| Form | Liquid |
| Purification | Size-exclusion chromatography |
| Storage buffer | PBS, pH 7.4, with 0.2% BSA |
| Contains | 15mM sodium azide |
| Storage conditions | 4° C, store in dark, DO NOT FREEZE! |
| RRID | AB_11152641 |

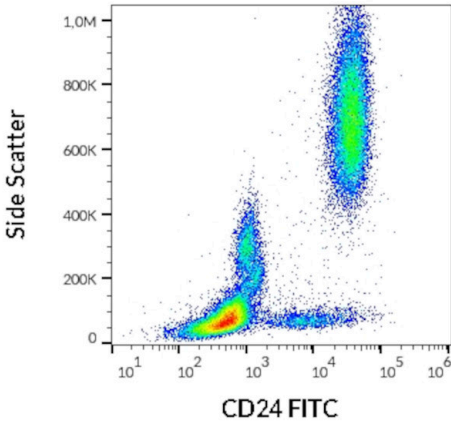
| Applications | Tested Dilution | Publications |
|----------------------------|-------------------------------|----------------|
| Western Blot (WB) | - | 3 Publications |
| Immunohistochemistry (IHC) | - | 6 Publications |
| Flow Cytometry (Flow) | 20 µL/1x10 ⁶ cells | 2 Publications |

Product Images For CD24 Monoclonal Antibody (SN3), FITC



CD24 Antibody (MA1-10153) in Flow

Separation of human CD24 positive lymphocytes (red-filled) from monocytes (black-dashed) in flow cytometry analysis (surface staining) of human peripheral whole blood stained using anti-human CD24 (SN3) FITC Monoclonal antibody (Product # MA1-10153) using a dilution of 20 μ L/100 μ L of peripheral whole blood.



CD24 Antibody (MA1-10153) in Flow

Flow cytometry surface staining pattern of human peripheral whole blood stained using anti-human CD24 (SN3) FITC Monoclonal antibody (Product # MA1-10153) using a dilution of 20 μ L/100 μ L of peripheral whole blood.

Western Blot (3)

| | |
|---|---|
| <p>Journal of biomedicine & biotechnology</p> <p>CD24 expression as a marker for predicting clinical outcome in human gliomas.</p> <p>"MA1-10153 was used in western blot to study the prognostic value of CD24 expression in human gliomas"</p> <p>Authors: Deng J,Gao G,Wang L,Wang T,Yu J,Zhao Z</p> | <p>Year 2012</p> <p>Species Human</p> |
| <p>Annals of surgical oncology</p> <p>CD24 expression is a novel prognostic factor in esophageal squamous cell carcinoma.</p> <p>"MA1-10153 was used in western blot to study the prognostic value of CD24 overexpression in esophageal squamous cell carcinoma"</p> <p>Authors: Sano A,Kato H,Sakurai S,Sakai M,Tanaka N,Inose T,Saito K,Sohda M,Nakajima M,Nakajima T,Kuwano H</p> | <p>Year 2009</p> <p>Species Human</p> |

View more WB references on thermofisher.com

Immunohistochemistry (6)

| | |
|--|---|
| <p>Histopathology</p> <p>CD24 and CD44 in salivary gland pleomorphic adenoma and in human salivary gland morphogenesis: differential markers of glandular structure or stem cell indicators?</p> <p>"MA1-10153 was used in immunohistochemistry to study whether CD24 and CD44 expression in salivary glands can be used as markers of cancer stem cells"</p> <p>Authors: Ianez RC,Coutinho-Camillo CM,Buim ME,Pinto CA,Soares FA,Lourenço SV</p> | <p>Year 2013</p> <p>Species Human</p> <p>Dilution 1:100</p> |
| <p>Biochemical pharmacology</p> <p>Acetaminophen-induced differentiation of human breast cancer stem cells and inhibition of tumor xenograft growth in mice.</p> <p>"MA1-10153 was used in immunohistochemistry to screen compounds able to induce differentiation of cancer stem cells"</p> <p>Authors: Takehara M,Hoshino T,Namba T,Yamakawa N,Mizushima T</p> | <p>Year 2011</p> <p>Species Human</p> |

View more IHC references on thermofisher.com

More applications with references on thermofisher.com

Flow (2)

For Research Use Only. Not for use in diagnostic procedures. Not for resale without express authorization. Products are warranted to operate or perform substantially in conformance with published Product specifications in effect at the time of sale, as set forth in the Production documentation, specifications and/or accompanying package inserts ("Documentation"). No claim of suitability for use in applications regulated by FDA is made. The warranty provided herein is valid only when used by properly trained individuals. Unless otherwise stated in the Documentation, this warranty is limited to one year from date of shipment when the Product is subjected to normal, proper and intended usage. This warranty does not extend to anyone other than the Buyer. Any model or sample furnished to Buyer is merely illustrative of the general type and quality of goods and does not represent that any Product will conform to such model or sample. NO OTHER WARRANTIES, EXPRESS OR IMPLIED, ARE GRANTED INCLUDING WITHOUT LIMITATION, IMPLIED WARRANTIES OF MERCHANTABILITY, FITNESS FOR ANY PARTICULAR PURPOSE, OR NON-INFRINGEMENT. BUYER'S EXCLUSIVE REMEDY FOR NON-CONFORMING PRODUCTS DURING THE WARRANTY PERIOD IS LIMITED TO REPAIR, REPLACEMENT OF OR REFUND FOR THE NON-CONFORMING PRODUCT(S) AT SELLER'S SOLE OPTION. THERE IS NO OBLIGATION TO REPAIR, REPLACE OR REFUND FOR PRODUCTS AS THE RESULT OF (I) ACCIDENT, DISASTER OR EVENT OF FORCE MAJEURE, (II) MISUSE, FAULT OR NEGLIGENCE OF OR BY BUYER, (III) USE OF THE PRODUCTS IN A MANNER FOR WHICH THEY WERE NOT DESIGNED, OR (IV) IMPROPER STORAGE AND HANDLING OF THE PRODUCTS. Unless otherwise expressly stated on the Product or in the documentation accompanying the Product, the Product is intended for research only and is not to be used for any other purpose, including without limitation, unauthorized commercial uses, in vitro diagnostic uses, ex vivo or in vivo therapeutic uses, or any type of consumption by or application to human or animals.