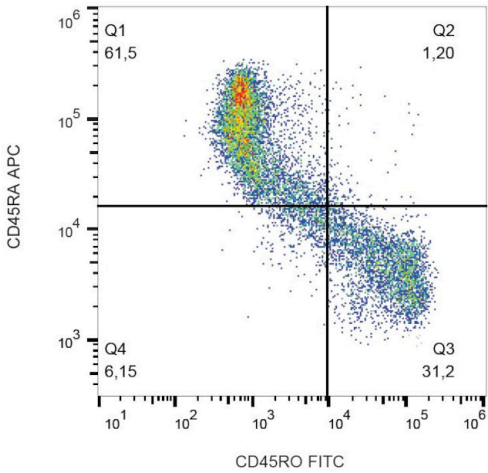


CD45RO Monoclonal Antibody (UCHL1), FITC

Product Details	
Size	100 Tests
Species Reactivity	Human
Published Species	Human, Mouse
Host/Isotype	Mouse / IgG2a
Class	Monoclonal
Type	Antibody
Clone	UCHL1
Conjugate	FITC
Excitation/Emission Max	498/517 nm
Immunogen	Human IL-2 dependent T cells
Form	Liquid
Purification	Size-exclusion chromatography
Storage buffer	PBS, pH 7.4, with 0.2% BSA
Contains	15mM sodium azide
Storage conditions	4° C, store in dark, DO NOT FREEZE!
RRID	AB_11153235

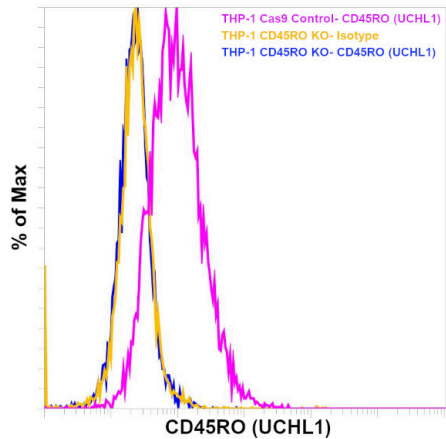
Applications	Tested Dilution	Publications
Immunohistochemistry (IHC)	-	7 Publications
Immunocytochemistry (ICC/IF)	-	1 Publication
Flow Cytometry (Flow)	20 µL/1x10^6 cells	2 Publications
Miscellaneous PubMed (Misc)	-	1 Publication

Product Images For CD45RO Monoclonal Antibody (UCHL1), FITC



CD45RO Antibody (MA1-10235) in Flow

Flow cytometry analysis (surface staining) of CD45R0 in human peripheral blood with anti-CD45R0 (UCHL1) FITC Monoclonal antibody (Product # MA1-10235).



CD45RO Antibody (MA1-10235)

Antibody clone (UCHL1) specificity was demonstrated by CRISPR-Cas9 mediated knockout of target protein. Lossof signal was observed for target protein in UCHL1 KOcells (blue histogram) compared to the control Cas9cells (pink histogram) using CD45RO antibody (UCHL1). Yellow histogram represents staining with the isotype control. {KO}

Immunohistochemistry (7)

<p>Türk patoloji dergisi</p> <p>A giant primary sclerosing lipogranuloma of the scrotum.</p> <p>"MA1-10235 was used in immunohistochemistry to report on a case of giant primary sclerosing lipogranuloma of the scrotum"</p> <p>Authors: Mungan S,Karagüzel E,Turan C,Res A</p>	<p>Year 2014</p> <p>Species Human</p>
<p>Development (Cambridge, England)</p> <p>Axonal projections of mechanoreceptive dorsal root ganglion neurons depend on Ret.</p> <p>"MA1-10235 was used in immunohistochemistry to study the role of Ret in the neurturin-mediated formation of precise axonal projections in the central nervous system"</p> <p>Authors: Honma Y,Kawano M,Kohsaka S,Ogawa M</p>	<p>Year 2010</p> <p>Species Mouse</p>

[View more IHC references on thermofisher.com](#)

Immunocytochemistry (1)

<p>Cancer research</p> <p>Up-regulation of expression of the ubiquitin carboxyl-terminal hydrolase L1 gene in human airway epithelium of cigarette smokers.</p> <p>"MA1-10235 was used in immunocytochemistry to investigate the expression of carboxyl-terminal hydrolyase L1 gene in human airway epithelium of cigarette smokers"</p> <p>Authors: Carolan BJ,Heguy A,Harvey BG,Leopold PL,Ferris B,Crystal RG</p>	<p>Year 2006</p> <p>Species Human</p> <p>Dilution 1:2,500</p>
--	--

Flow Cytometry (2)

<p>Clinical and experimental immunology</p> <p>Natural regulatory T cells: number and function are normal in the majority of patients with lupus nephritis.</p> <p>"MA1-10235 was used in flow cytometry to examine the frequency, phenotype, and function of T regulatory cells in patients with systemic lupus erythematosus and inactive disease"</p> <p>Authors: Yates J,Whittington A,Mitchell P,Lechler RI,Lightstone L,Lombardi G</p>	<p>Year 2008</p>
--	-----------------------------

More applications with references on thermofisher.com

Misc (1)

For Research Use Only. Not for use in diagnostic procedures. Not for resale without express authorization. Products are warranted to operate or perform substantially in conformance with published Product specifications in effect at the time of sale, as set forth in the Production documentation, specifications and/or accompanying package inserts ("Documentation"). No claim of suitability for use in applications regulated by FDA is made. The warranty provided herein is valid only when used by properly trained individuals. Unless otherwise stated in the Documentation, this warranty is limited to one year from date of shipment when the Product is subjected to normal, proper and intended usage. This warranty does not extend to anyone other than the Buyer. Any model or sample furnished to Buyer is merely illustrative of the general type and quality of goods and does not represent that any Product will conform to such model or sample. NO OTHER WARRANTIES, EXPRESS OR IMPLIED, ARE GRANTED INCLUDING WITHOUT LIMITATION, IMPLIED WARRANTIES OF MERCHANTABILITY, FITNESS FOR ANY PARTICULAR PURPOSE, OR NON INFRINGEMENT. BUYER'S EXCLUSIVE REMEDY FOR NON-CONFORMING PRODUCTS DURING THE WARRANTY PERIOD IS LIMITED TO REPAIR, REPLACEMENT OF OR REFUND FOR THE NON-CONFORMING PRODUCT(S) AT SELLER'S SOLE OPTION. THERE IS NO OBLIGATION TO REPAIR, REPLACE OR REFUND FOR PRODUCTS AS THE RESULT OF (I) ACCIDENT, DISASTER OR EVENT OF FORCE MAJEURE, (II) MISUSE, FAULT OR NEGLIGENCE OF OR BY BUYER, (III) USE OF THE PRODUCTS IN A MANNER FOR WHICH THEY WERE NOT DESIGNED, OR (IV) IMPROPER STORAGE AND HANDLING OF THE PRODUCTS. Unless otherwise expressly stated on the Product or in the documentation accompanying the Product, the Product is intended for research only and is not to be used for any other purpose, including without limitation, unauthorized commercial uses, in vitro diagnostic uses, ex vivo or in vivo therapeutic uses, or any type of consumption by or application to human or animals.