

Cytokeratin 18 Monoclonal Antibody (DC-10), FITC

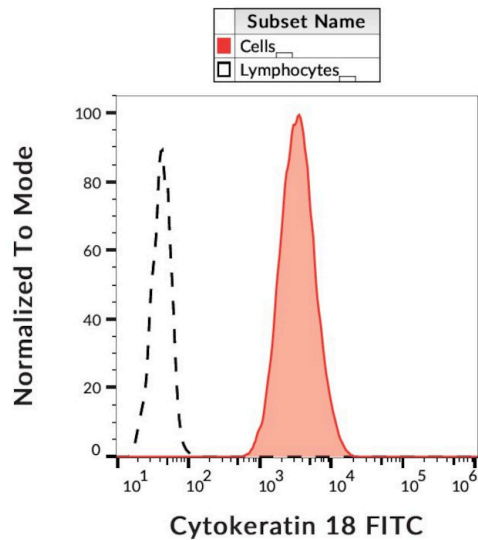
Product Details	
Size	100 µg
Species Reactivity	Human
Published Species	Non-human primate, Human, Mouse, Rhesus monkey
Host/Isotype	Mouse / IgG1
Class	Monoclonal
Type	Antibody
Clone	DC-10
Conjugate	FITC
Excitation/Emission Max	498/517 nm
Immunogen	Human breast carcinoma cell line PMC-42.
Form	Liquid
Concentration	0.1 mg/mL
Purification	Size-exclusion chromatography
Storage buffer	PBS, pH 7.4, with 0.2% BSA
Contains	15mM sodium azide
Storage conditions	4° C, store in dark, DO NOT FREEZE!
RRID	AB_11154144

Applications	Tested Dilution	Publications
Western Blot (WB)	-	8 Publications
Immunohistochemistry (IHC)	-	9 Publications
Flow Cytometry (Flow)	1-5 µg/mL	2 Publications
ELISA (ELISA)	-	1 Publication
Immunoprecipitation (IP)	-	1 Publication

Product Specific Information

This antibody will not cross-react with porcine, mouse, rat, hamster, bovine, canine or sheep.

Product Images For Cytokeratin 18 Monoclonal Antibody (DC-10), FITC



Cytokeratin 18 Antibody (MA1-10327) in Flow
Flow cytometry analysis (intracellular staining) of HeLa cells with anti-cytokeratin 18 (DC-10) FITC Monoclonal antibody (Product # MA1-10327).

Western Blot (8)

Cell death and differentiation

Antagonistic roles of Notch and p63 in controlling mammary epithelial cell fates.

"MA1-10327 was used in western blot to investigate the role of Notch and p63 in regulation of mammary epithelial cell fates"

Authors: Yalcin-Ozuysal O,Fiche M,Guitierrez M,Wagner KU,Raffoul W,Briskin C

Year
2010

Species
Human

Dilution
1:2000

Nature cell biology

Cytoskeletal keratin glycosylation protects epithelial tissue from injury.

"MA1-10327 was used in western blot to study the role of cytoskeletal keratin glycosylation in protecting epithelial tissue from injury"

Authors: Ku NO,Toivola DM,Strnad P,Omary MB

Year
2010

Species
Mouse

Dilution
1:1000

[View more WB references on thermofisher.com](#)

Immunohistochemistry (9)

APMIS : acta pathologica, microbiologica, et immunologica Scandinavica

Malignant transformation of adenomyoepithelioma of the breast by a monophasic population: a report of two cases and review of literature.

"MA1-10327 was used in immunohistochemistry to report on two cases of malignant transformation of adenomyoepithelioma of the breast by a monophasic population"

Authors: Marian C,Boila A,Soanca D,Malau M,Podeanu DM,Resetkova E,Stolnicu S

Year
2013

Species
Human

Dilution
1:200

Virchows Archiv : an international journal of pathology

Expression of KRT7 and WT1 differentiates precursor lesions of Wilms' tumours from those of papillary renal cell tumours and mucinous tubular and spindle cell carcinomas.

"MA1-10327 was used in immunohistochemistry to study the value of KRT7 and WT1 expression profiles in differentiating Wilms' tumour, papillary renal cell tumour and mucinous tubular and spindle cell carcinoma precursor lesions"

Authors: Szponar A,Kovacs G

Year
2012

Species
Human

Dilution
1:500

[View more IHC references on thermofisher.com](#)

More applications with references on thermofisher.com

Flow (2)

ELISA (1)

IP (1)

For Research Use Only. Not for use in diagnostic procedures. Not for resale without express authorization. Products are warranted to operate or perform substantially in conformance with published Product specifications in effect at the time of sale, as set forth in the Production documentation, specifications and/or accompanying package inserts ("Documentation"). No claim of suitability for use in applications regulated by FDA is made. The warranty provided herein is valid only when used by properly trained individuals. Unless otherwise stated in the Documentation, this warranty is limited to one year from date of shipment when the Product is subjected to normal, proper and intended usage. This warranty does not extend to anyone other than the Buyer. Any model or sample furnished to Buyer is merely illustrative of the general type and quality of goods and does not represent that any Product will conform to such model or sample. NO OTHER WARRANTIES, EXPRESS OR IMPLIED, ARE GRANTED INCLUDING WITHOUT LIMITATION, IMPLIED WARRANTIES OF MERCHANTABILITY, FITNESS FOR ANY PARTICULAR PURPOSE, OR NON-INFRINGEMENT. BUYER'S EXCLUSIVE REMEDY FOR NON-CONFORMING PRODUCTS DURING THE WARRANTY PERIOD IS LIMITED TO REPAIR, REPLACEMENT OF OR REFUND FOR THE NON-CONFORMING PRODUCT(S) AT SELLER'S SOLE OPTION. THERE IS NO OBLIGATION TO REPAIR, REPLACE OR REFUND FOR PRODUCTS AS THE RESULT OF (I) ACCIDENT, DISASTER OR EVENT OF FORCE MAJEURE, (II) MISUSE, FAULT OR NEGLIGENCE OF OR BY BUYER, (III) USE OF THE PRODUCTS IN A MANNER FOR WHICH THEY WERE NOT DESIGNED, OR (IV) IMPROPER STORAGE AND HANDLING OF THE PRODUCTS. Unless otherwise expressly stated on the Product or in the documentation accompanying the Product, the Product is intended for research only and is not to be used for any other purpose, including without limitation, unauthorized commercial uses, in vitro diagnostic uses, ex vivo or in vivo therapeutic uses, or any type of consumption by or application to human or animals.