

SHIP1 Monoclonal Antibody (SHIP-02)

Product Details

Size	100 µg
Species Reactivity	Human, Mouse
Host/Isotype	Mouse / IgG2a
Class	Monoclonal
Type	Antibody
Clone	SHIP-02
Conjugate	Unconjugated
Immunogen	Peptide corresponding to a sequence within N-terminal domain of Human SHIP-1.
Form	Liquid
Concentration	1 mg/mL
Purification	Protein A
Storage buffer	PBS, pH 7.4
Contains	15mM sodium azide
Storage conditions	4° C, do not freeze
RRID	AB_11154124

Applications	Tested Dilution	Publications
Western Blot (WB)	Assay-dependent	-
Immunocytochemistry (ICC/IF)	1:100	-
Flow Cytometry (Flow)	2-5 µg/mL	-

Product Specific Information

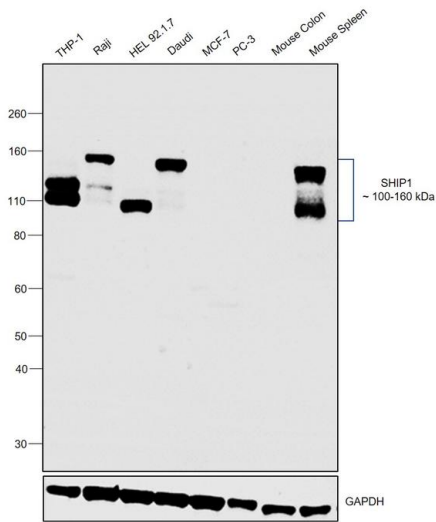
This antibody reacts with SHIP-1, a phosphoinositide phosphatase largely confined to hematopoietic cells. Multiple forms of SHIP-1 have been reported with molecular weights of 110, 125, 130, 135 and 145 kDa.

Western Blot: Reducing conditions.

Product Images For SHIP1 Monoclonal Antibody (SHIP-02)

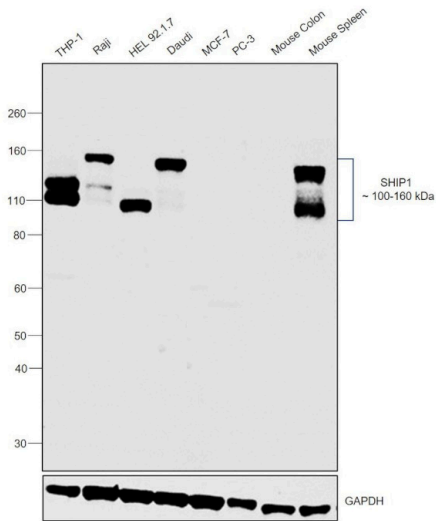
SHIP1 Antibody (MA1-10450) in WB

Western blot was performed using Anti-SHIP1 Monoclonal Antibody (SHIP-02) (Product # MA1-10450) and 100-160 kDa bands corresponding to SHIP1 was observed across cell lines and Mouse Spleen except MCF-7, PC-3 and Mouse Colon which are reported to be low. Membrane enriched extracts (30 µg lysate) of THP-1 (Lane 1), Raji (Lane 2), HEL 92.1.7 (Lane 3), Daudi (Lane 4), MCF-7 (Lane 5), PC-3 (Lane 6), tissue extracts of Mouse Colon (Lane 7) and Mouse Spleen (Lane 8) were electrophoresed using Novex® NuPAGE® 4-12 % Bis-Tris gel (Product # NP0322BOX). Resolved proteins were then transferred onto a nitrocellulose membrane (Product # IB23001) by iBlot® 2 Dry Blotting System (Product # IB21001). The blot was probed with the primary antibody (1:1000 dilution) and detected by chemiluminescence with Goat anti-Mouse IgG (H+L), Superclonal™ Recombinant Secondary Antibody, HRP (Product # A28177, 1: 4000 dilution) using the iBright FL 1000 (Product # A32752). Chemiluminescent detection was performed using Novex® ECL Chemiluminescent Substrate Reagent Kit (Product # WP20005).



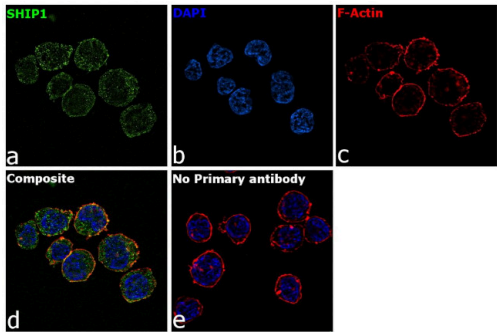
SHIP1 Antibody (MA1-10450)

Antibody specificity was demonstrated by detection of differential basal expression of the target across cell lines and tissues tested owing to their inherent genetic constitution. Relative expression of SHIP1 was observed in THP-1, Raji, HEL 92.1.7, Daudi and Mouse Spleen in comparison to MCF-7, PC-3 and Mouse Colon using Anti-SHIP1 Monoclonal Antibody (SHIP-02) (Product # MA1-10450) in Western Blot. {RE}



SHIP1 Antibody (MA1-10450) in ICC/IF

Immunofluorescence analysis of SHIP1 was performed using 70% confluent log phase THP-1 cells. The cells were fixed with 4% paraformaldehyde for 10 minutes, permeabilized with 0.1% Triton™ X-100 for 15 minutes, and blocked with 2% BSA for 1 hour at room temperature. The cells were labeled with SHIP1 Mouse Monoclonal Antibody (SHIP-02) (Product # MA1-10450) at 1:100 dilution in 0.1% BSA, incubated at 4 degree Celsius overnight and then with Goat anti-Mouse IgG (H+L) Highly Cross-Adsorbed Secondary Antibody, Alexa Fluor Plus 488 (Product # A32723) at a dilution of 1:2000 for 45 minutes at room temperature (Panel a: green). Nuclei (Panel b: blue) were stained with ProLong™ Diamond Antifade Mountant with DAPI (Product # P36962). F-actin (Panel c: red) was stained with Rhodamine Phalloidin (Product # R415, 1:300). Panel d represents the merged image showing membrane and cytoplasmic localization. Panel e represents control cells with no primary antibody to assess background. The images were captured at 60X magnification.



View more figures on thermofisher.com

For Research Use Only. Not for use in diagnostic procedures. Not for resale without express authorization. Products are warranted to operate or perform substantially in conformance with published Product specifications in effect at the time of sale, as set forth in the Production documentation, specifications and/or accompanying package inserts ("Documentation"). No claim of suitability for use in applications regulated by FDA is made. The warranty provided herein is valid only when used by properly trained individuals. Unless otherwise stated in the Documentation, this warranty is limited to one year from date of shipment when the Product is subjected to normal, proper and intended usage. This warranty does not extend to anyone other than the Buyer. Any model or sample furnished to Buyer is merely illustrative of the general type and quality of goods and does not represent that any Product will conform to such model or sample. NO OTHER WARRANTIES, EXPRESS OR IMPLIED, ARE GRANTED INCLUDING WITHOUT LIMITATION, IMPLIED WARRANTIES OF MERCHANTABILITY, FITNESS FOR ANY PARTICULAR PURPOSE, OR NON INFRINGEMENT. BUYER'S EXCLUSIVE REMEDY FOR NON-CONFORMING PRODUCTS DURING THE WARRANTY PERIOD IS LIMITED TO REPAIR, REPLACEMENT OF OR REFUND FOR THE NON-CONFORMING PRODUCT(S) AT SELLER'S SOLE OPTION. THERE IS NO OBLIGATION TO REPAIR, REPLACE OR REFUND FOR PRODUCTS AS THE RESULT OF (I) ACCIDENT, DISASTER OR EVENT OF FORCE MAJEURE, (II) MISUSE, FAULT OR NEGLIGENCE OF OR BY BUYER, (III) USE OF THE PRODUCTS IN A MANNER FOR WHICH THEY WERE NOT DESIGNED, OR (IV) IMPROPER STORAGE AND HANDLING OF THE PRODUCTS. Unless otherwise expressly stated on the Product or in the documentation accompanying the Product, the Product is intended for research only and is not to be used for any other purpose, including without limitation, unauthorized commercial uses, in vitro diagnostic uses, ex vivo or in vivo therapeutic uses, or any type of consumption by or application to human or animals.