

Caspase 9 Monoclonal Antibody (LAAP6 96 2-22)

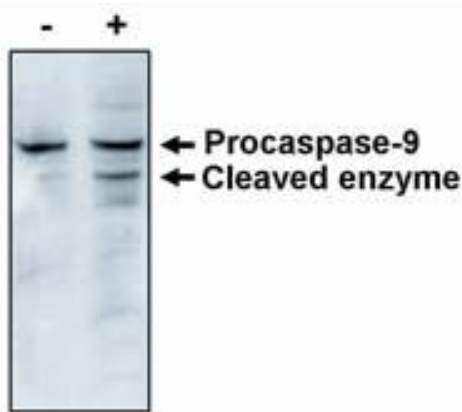
| Product Details | |
|--------------------|-------------------------------------|
| Size | 100 µg |
| Species Reactivity | Human |
| Published Species | Human |
| Host/Isotope | Mouse / IgG1 |
| Class | Monoclonal |
| Type | Antibody |
| Clone | LAAP6 96 2-22 |
| Conjugate | Unconjugated |
| Immunogen | Recombinant human capase-9 protein. |
| Form | Liquid |
| Concentration | 1 mg/mL |
| Purification | Protein A/G |
| Storage buffer | PBS |
| Contains | 0.08% sodium azide |
| Storage Conditions | -20° C, Avoid Freeze/Thaw Cycles |
| RRID | AB_1071024 |

| Applications | Tested | Dilution | Published |
|-------------------|--------|-----------------|----------------|
| Western Blot (WB) | ✓ | Assay Dependent | 2 Publications |

Product Specific Information

A suggested positive control for this product is MCF-7 cell lysate.

Product Images For Caspase 9 Monoclonal Antibody (LAAP6 96 2-22)



Caspase 9 Antibody (MA1-12562) in WB

Western blot analysis of Caspase 9 using a monoclonal antibody (Product # MA1-12562).

2 References

Western Blot (2)

Molecular cancer

Esculetin induces antiproliferative and apoptotic response in pancreatic cancer cells by directly binding to KEAP1.

"MA1-12562 was used in western blot to elucidate the mechanism by which esculetin induces cytotoxicity in cancer cells"

Authors: Arora R, Sawney S, Saini V, Steffi C, Tiwari M, Saluja D

Species
Human

Dilution
Not Cited

Year
2016

Genes and cancer

Identification of *CETP* as a molecular target for estrogen positive breast cancer cell death by cholesterol depleting agents.

"MA1-12562 was used in western blot to investigate cholesteryl ester transfer protein as a therapeutic target for breast cancer"

Authors: Esau L, Sagar S, Bangarusamy D, Kaur M

Species
Human

Dilution
Not Cited

Year
2016

For Research Use Only. Not for use in diagnostic procedures. Not for resale without express authorization. Products are warranted to operate or perform substantially in conformance with published Product specifications in effect at the time of sale, as set forth in the Production documentation, specifications and/or accompanying package inserts ("Documentation"). No claim of suitability for use in applications regulated by FDA is made. The warranty provided herein is valid only when used by properly trained individuals. Unless otherwise stated in the Documentation, this warranty is limited to one year from date of shipment when the Product is subjected to normal, proper and intended usage. This warranty does not extend to anyone other than the Buyer. Any model or sample furnished to Buyer is merely illustrative of the general type and quality of goods and does not represent that any Product will conform to such model or sample. NO OTHER WARRANTIES, EXPRESS OR IMPLIED, ARE GRANTED INCLUDING WITHOUT LIMITATION, IMPLIED WARRANTIES OF MERCHANTABILITY, FITNESS FOR ANY PARTICULAR PURPOSE, OR NON INFRINGEMENT. BUYER'S EXCLUSIVE REMEDY FOR NON-CONFORMING PRODUCTS DURING THE WARRANTY PERIOD IS LIMITED TO REPAIR, REPLACEMENT OF OR REFUND FOR THE NON-CONFORMING PRODUCT(S) AT SELLER'S SOLE OPTION. THERE IS NO OBLIGATION TO REPAIR, REPLACE OR REFUND FOR PRODUCTS AS THE RESULT OF (I) ACCIDENT, DISASTER OR EVENT OF FORCE MAJEURE, (II) MISUSE, FAULT OR NEGLIGENCE OF OR BY BUYER, (III) USE OF THE PRODUCTS IN A MANNER FOR WHICH THEY WERE NOT DESIGNED, OR (IV) IMPROPER STORAGE AND HANDLING OF THE PRODUCTS. Unless otherwise expressly stated on the Product or in the documentation accompanying the Product, the Product is intended for research only and is not to be used for any other purpose, including without limitation, unauthorized commercial uses, in vitro diagnostic uses, ex vivo or in vivo therapeutic uses, or any type of consumption by or application to human or animals.