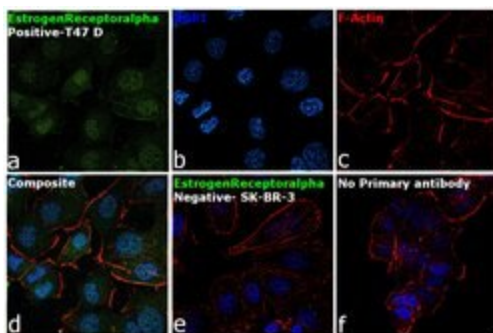


Estrogen Receptor alpha Monoclonal Antibody (AER311)

Product Details	
Size	100 µg
Species	Human, Mouse
Published Species	Bovine, Human, Mouse
Expression System	Mouse / IgG2a
Class	Monoclonal
Type	Antibody
Clone	AER311
Conjugate	Unconjugated
Immunogen	Estrogen receptors from calf uterus.
Form	Liquid
Concentration	0.5 mg/mL
Purification	Protein A/G
Storage buffer	PBS
Contains	0.08% sodium azide
Storage Conditions	-20° C, Avoid Freeze/Thaw Cycles
RRID	AB_1074280

Applications	Tested Dilution	Publications
ChIP assay (ChIP)	2.5 µg/10 ⁶ cells	-
ELISA (ELISA)	Assay Dependent	-
Immunocytochemistry (ICC)	1:100	1 Publication
Immunofluorescence (IF)	1:100	-
Immunohistochemistry (IHC)	Assay Dependent	5 Publications
Immunoprecipitation (IP)	Assay Dependent	-
Western Blot (WB)	1:1000	7 Publications
Gel Shift (GS)	-	1 Publication

Advanced Verification Data

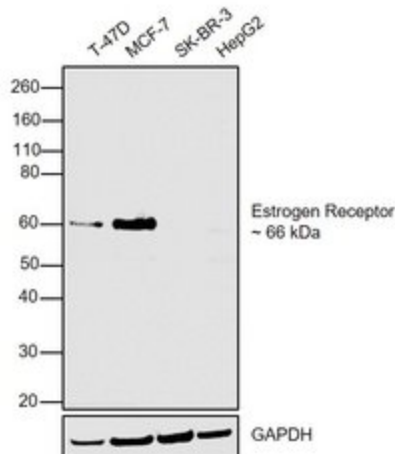


Estrogen Receptor alpha Antibody (MA1-12600)

Antibody specificity was demonstrated by detection of differential basal expression of the target across cell models owing to their inherent genetic constitution. Immunofluorescence analysis using Estrogen Receptor alpha Monoclonal Antibody (AER311) (Product # MA1-12600), shows positive Nuclear localization in T-47D when compared to SK-BR-3 cells. Relative expression validation info.

Estrogen Receptor alpha Antibody (MA1-12600)

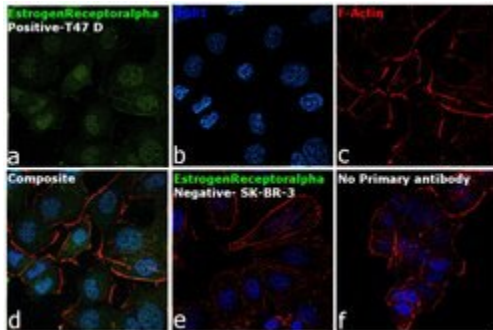
Antibody specificity was demonstrated by detection of differential basal expression of the target across cell lines and tissues owing to their inherent genetic constitution. Relative expression of Estrogen Receptor alpha was observed in T-47D and MCF-7 but not in SK-BR-3 and HepG2 which are reported to be negative using Estrogen Receptor alpha Monoclonal Antibody (AER311) (Product # MA1-12600) in Western Blot. Relative expression validation info.



Product Images For Estrogen Receptor alpha Monoclonal Antibody (AER311)

Estrogen Receptor alpha Antibody (MA1-12600) in ICC

Immunofluorescence analysis of Estrogen Receptor alpha was performed using 70% confluent log phase T-47D cells. The cells were fixed with 4% paraformaldehyde for 10 minutes, permeabilized with 0.1% Triton™ X-100 for 15 minutes, and blocked with 2% BSA for 45 minutes at room temperature. The cells were labeled with beta Estrogen Receptor alpha Monoclonal Antibody (AER311) (Product # MA1-12600) at 1:200 dilution in 0.1% BSA, incubated at 4 degree celsius overnight and then labeled with Goat anti-Mouse IgG (H+L) Highly Cross-Adsorbed Secondary Antibody, Alexa Fluor Plus 488 (Product # A32723), (1:2000 dilution), for 45 minutes at room temperature (Panel a: Green). Nuclei (Panel b: Blue) were stained with ProLong™ Diamond Antifade Mountant with DAPI (Product # P36962). F-actin (Panel c: Red) was stained with Rhodamine Phalloidin (Product # R415, 1:300). Panel d represents the merged image showing nuclear localization. Panel e represents merged image for SK-BR-3 cells showing no staining for Estrogen Receptor alpha. Panel f represents control cells with no primary antibody to assess background. The images were captured at 60X magnification.



View more figures on thermofisher.com

14 References

Immunohistochemistry (5)

Theriogenology

Endometrial expression of progesterone, estrogen, and oxytocin receptors and of 20-hydroxysteroid dehydrogenase and cyclooxygenase II 2 and 5 days after ovulation in induced short and normal estrous cycles in dairy cows.

"MA1-12600 was used in immunohistochemistry to study potential mechanisms to explain the short estrous cycles often observed in dairy cows following synchronization of estrus"

Authors: Rantala MH, Mutikainen M, Schuler G, Katila T, Taponen J

Species
Bovine

Dilution
1:200

Year
2014

Journal of obstetrics and gynaecology : the journal of the Institute of Obstetrics and Gynaecology

A comparison of oestrogen receptor and progesterone receptor expression in endometrial polyps and endometrium of premenopausal women.

"MA1-12600 was used in immunohistochemistry to study the expression of sex hormone receptors in endometrial polyps and surrounding endometrial tissue"

Authors: Peng X, Li T, Xia E, Xia C, Liu Y, Yu D

Species
Human

Dilution
Not Cited

Year
2009

[View more IHC references on thermofisher.com](#)

Western Blot (7)

Frontiers in oncology

Guggulsterone-mediated enhancement of radiosensitivity in human tumor cell lines.

"MA1-12600 was used in western blot to study the effects of guggulsterone on the radiosensitivity of human tumor cell lines"

Authors: Choudhuri R, Degraff W, Gamson J, Mitchell JB, Cook JA

Species
Human

Dilution
1:100

Year
2012

Journal of the National Cancer Institute

Estrogen-dependent signaling in a molecularly distinct subclass of aggressive prostate cancer.

"MA1-12600 was used in western blot to investigate the molecular signature of TMPRSS2-ERG gene fusions in prostate cancers"

Authors: Setlur SR, Mertz KD, Hoshida Y, Demichelis F, Lupien M, Perner S, Sboner A, Pawitan Y, Andr n O, Johnson LA, Tang J, Adami HO, Calza S, Chinnaiyan AM, Rhodes D, Tomlins S, Fall K, Mucci LA, Kantoff PW, Stampfer MJ, Andersson SO, Varenhorst E, Johansson JE, Brown M, Golub TR, Rubin MA

Species
Human

Dilution
1:100

Year
2008

[View more WB references on thermofisher.com](#)

More applications with references on thermofisher.com

ICC (1) GS (1)

For Research Use Only. Not for use in diagnostic procedures. Not for resale without express authorization. Products are warranted to operate or perform substantially in conformance with published Product specifications in effect at the time of sale, as set forth in the Production documentation, specifications and/or accompanying package inserts ("Documentation"). No claim of suitability for use in applications regulated by FDA is made. The warranty provided herein is valid only when used by properly trained individuals. Unless otherwise stated in the Documentation, this warranty is limited to one year from date of shipment when the Product is subjected to normal, proper and intended usage. This warranty does not extend to anyone other than the Buyer. Any model or sample furnished to Buyer is merely illustrative of the general type and quality of goods and does not represent that any Product will conform to such model or sample. NO OTHER WARRANTIES, EXPRESS OR IMPLIED, ARE GRANTED INCLUDING WITHOUT LIMITATION, IMPLIED WARRANTIES OF MERCHANTABILITY, FITNESS FOR ANY PARTICULAR PURPOSE, OR NON INFRINGEMENT. BUYER'S EXCLUSIVE REMEDY FOR NON-CONFORMING PRODUCTS DURING THE WARRANTY PERIOD IS LIMITED TO REPAIR, REPLACEMENT OF OR REFUND FOR THE NON-CONFORMING PRODUCT(S) AT SELLER'S SOLE OPTION. THERE IS NO OBLIGATION TO REPAIR, REPLACE OR REFUND FOR PRODUCTS AS THE RESULT OF (I) ACCIDENT, DISASTER OR EVENT OF FORCE MAJEURE, (II) MISUSE, FAULT OR NEGLIGENCE OF OR BY BUYER, (III) USE OF THE PRODUCTS IN A MANNER FOR WHICH THEY WERE NOT DESIGNED, OR (IV) IMPROPER STORAGE AND HANDLING OF THE PRODUCTS. Unless otherwise expressly stated on the Product or in the documentation accompanying the Product, the Product is intended for research only and is not to be used for any other purpose, including without limitation, unauthorized commercial uses, in vitro diagnostic uses, ex vivo or in vivo therapeutic uses, or any type of consumption by or application to human or animals.