

# BCR-ABL Monoclonal Antibody (7C6)

Product Details	
Size	100 µg
Species Reactivity	Human, Mouse
Published Species	Human
Host/Isotype	Mouse / IgG2a
Class	Monoclonal
Type	Antibody
Clone	7C6
Conjugate	Unconjugated
Immunogen	Bcr686 thyroglobulin conjugate corresponding to human BCR sequence 686-696 (SSINEEITPRRQS)
Form	Liquid
Concentration	1 mg/mL
Purification	Protein A
Storage buffer	PBS with 1mg/mL BSA
Contains	0.05% sodium azide
Storage conditions	-20°C
RRID	AB_2536861

Applications	Tested Dilution	Publications
Western Blot (WB)	1:500-1:1,000	1 Publication
Immunohistochemistry (Paraffin) (IHC (P))	1:50-1:500	-
Immunocytochemistry (ICC/IF)	1:50-1:100	-
Immunoprecipitation (IP)	5 µg	-

## Product Specific Information

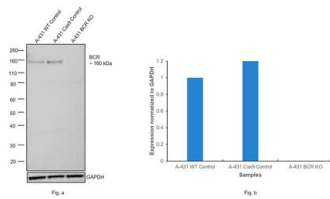
Western blot analysis of MA1-153 detects ~130-160 kDa and a 210-250 kDa protein in K562 cells. In addition to BCR-ABL, BCR and ABL are also expressed in these cells and full length BCR is also detected by the antibody. For detection purposes, non-reducing conditions resulted in enhanced detection of BCR-ABL.

## Product Images For BCR-ABL Monoclonal Antibody (7C6)



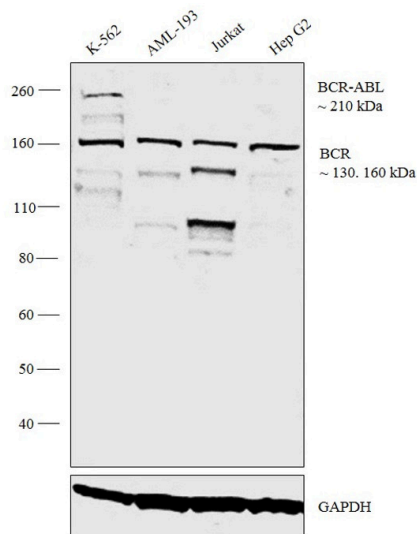
### BCR-ABL Antibody (MA1-153) in WB

Knockout of BCR was achieved by CRISPR-Cas9 genome editing using LentiArray™ Lentiviral sgRNA (Product # A32042, Assay ID CRISPR981967\_LV) and LentiArray Cas9 Lentivirus (Product # A32064). Western blot analysis of BCR was performed by loading 30 µg of A-431 Wild Type (Lane 1), A-431 Cas9 (Lane 2) and A-431 BCR KO (Lane 3) whole cell extracts. The samples were electrophoresed using NuPAGE™ 3-8% Tris-Acetate Protein Gel (Product # EA0378BOX). Resolved proteins were then transferred onto a nitrocellulose membrane (Product # IB23001) by iBlot® 2 Dry Blotting System (Product # IB21001). The blot was probed with Anti-BCR-ABL Monoclonal Antibody (7C6) (Product # MA1-153, 1:1,000 dilution) and Goat anti-Mouse IgG (H+L) Superclonal™ Recombinant Secondary Antibody, HRP (Product # A28177, 1:5,000 dilution) using the iBright FL 1000 (Product # A32752). Chemiluminescent detection was performed using Novex® ECL Chemiluminescent Substrate Reagent Kit (Product # WP20005). Loss of signal upon CRISPR mediated knockout (KO) using the LentiArray™ CRISPR product line confirms that antibody is specific to BCR.



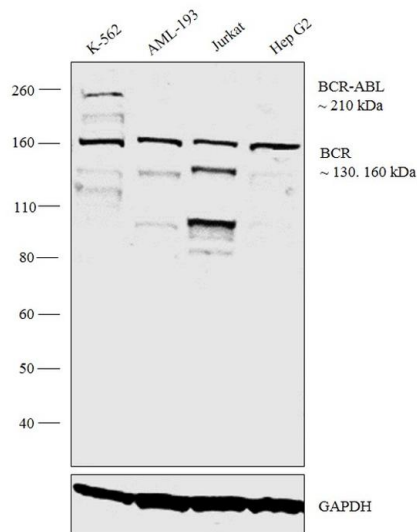
### BCR-ABL Antibody (MA1-153)

Antibody specificity was demonstrated by detection of differential basal expression of the target across cell lysates owing to their inherent genetic constitution. Relatively high expression of BCR-ABL (~210 kDa) was observed in K562 when compared to other cell lines tested along with BCR protein (~130, 160kDa) using BCR-ABL Monoclonal antibody (Product # MA1-153) in western blot. {RE}



### BCR-ABL Antibody (MA1-153) in WB

Western blot analysis was performed on membrane enriched extracts of K-562 (Lane 1), AML-193 (Lane 2), Jurkat (Lane 3) and Hep G2 (Lane 4). The blot was probed with Anti-BCR-ABL Monoclonal Antibody (Product # MA1-153, 1:1000 dilution) and detected by chemiluminescence using Goat anti-Mouse IgG (H+L) Superclonal™ Secondary Antibody, HRP conjugate (Product # A28177, 0.25 µg /ml, 1:4000 dilution). A 210 kDa band corresponding to BCR-ABL was detected in K-562 cell line when compared to other cell lines which were reported to be negative. Also the antibody detects 130, 160 kDa band corresponding to BCR across all the cell lines tested.





View more figures on [thermofisher.com](https://thermofisher.com)

1 Reference

Western Blot (1)

Haematologica	Year 2021
<b>The quiescent fraction of chronic myeloid leukemic stem cells depends on BMPR1B, Stat3 and BMP4-niche signals to persist in patients in remission.</b>	Species Human
"Published figure using BCR-ABL monoclonal antibody (Product # MA1-153) in Western Blot"	
Authors: Jeanpierre S,Arizkane K,Thongjuea S,Grockowiak E,Geistlich K,Barral L,Voeltzel T,Guillemin A,Gonin-Giraud S,Gandrillon O,Nicolini FE,Mead AJ,Maguer-Satta V,Lefort S	

For Research Use Only. Not for use in diagnostic procedures. Not for resale without express authorization. Products are warranted to operate or perform substantially in conformance with published Product specifications in effect at the time of sale, as set forth in the Production documentation, specifications and/or accompanying package inserts ("Documentation"). No claim of suitability for use in applications regulated by FDA is made. The warranty provided herein is valid only when used by properly trained individuals. Unless otherwise stated in the Documentation, this warranty is limited to one year from date of shipment when the Product is subjected to normal, proper and intended usage. This warranty does not extend to anyone other than the Buyer. Any model or sample furnished to Buyer is merely illustrative of the general type and quality of goods and does not represent that any Product will conform to such model or sample. NO OTHER WARRANTIES, EXPRESS OR IMPLIED, ARE GRANTED INCLUDING WITHOUT LIMITATION, IMPLIED WARRANTIES OF MERCHANTABILITY, FITNESS FOR ANY PARTICULAR PURPOSE, OR NON INFRINGEMENT. BUYER'S EXCLUSIVE REMEDY FOR NON-CONFORMING PRODUCTS DURING THE WARRANTY PERIOD IS LIMITED TO REPAIR, REPLACEMENT OF OR REFUND FOR THE NON-CONFORMING PRODUCT(S) AT SELLER'S SOLE OPTION. THERE IS NO OBLIGATION TO REPAIR, REPLACE OR REFUND FOR PRODUCTS AS THE RESULT OF (I) ACCIDENT, DISASTER OR EVENT OF FORCE MAJEURE, (II) MISUSE, FAULT OR NEGLIGENCE OF OR BY BUYER, (III) USE OF THE PRODUCTS IN A MANNER FOR WHICH THEY WERE NOT DESIGNED, OR (IV) IMPROPER STORAGE AND HANDLING OF THE PRODUCTS. Unless otherwise expressly stated on the Product or in the documentation accompanying the Product, the Product is intended for research only and is not to be used for any other purpose, including without limitation, unauthorized commercial uses, in vitro diagnostic uses, ex vivo or in vivo therapeutic uses, or any type of consumption by or application to human or animals.