

Cyclin B2 Monoclonal Antibody (X29.2)

Product Details

Size	100 µg
Species Reactivity	Human, Mouse, Non-human primate, Xenopus
Host/Isotype	Mouse / IgG1
Class	Monoclonal
Type	Antibody
Clone	X29.2
Conjugate	Unconjugated
Immunogen	Xenopus laevis cyclin B2
Form	Liquid
Concentration	1 mg/mL
Purification	Protein A
Storage buffer	PBS with 1mg/mL BSA, 30% glycerol
Contains	0.05% sodium azide
Storage conditions	-20°C
RRID	AB_2536864

Applications	Tested Dilution	Publications
Western Blot (WB)	1:1,000	-
Immunohistochemistry (Paraffin) (IHC (P))	1:50-1:500	-
Immunocytochemistry (ICC/IF)	1:20-1:200	-
Immunoprecipitation (IP)	1:1,000	-

Product Specific Information

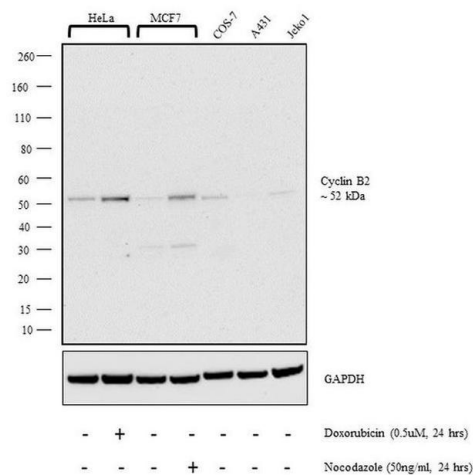
MA1-156 detects Cyclin B2 in mammalian samples. MA1-156 has been successfully used in Immunofluorescence, Immunoprecipitation, IHC (P) and Western Blot procedures. Immunoprecipitation and Western Blot analysis with MA1-156 show the accumulation of a prominent band at ~51 kDa in camptothecin and hydroxyurea treated cells. MA1-156 also detects additional unknown band at ~80 kDa. In Immunofluorescence applications, MA1-156 shows cyclin B2 staining consistent with the Golgi region, whereas MA1-155 shows cyclin B1 co-localization with microtubules.

MA1-156 reacts with Cyclin B2 from Xenopus laevis and mammalian sources. In Western blot applications, X29.2 also cross reacts with Cyclin B1.

Product Images For Cyclin B2 Monoclonal Antibody (X29.2)

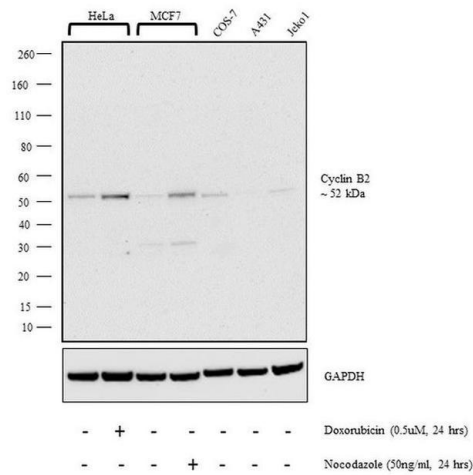
Cyclin B2 Antibody (MA1-156)

Altered expression of target protein upon cell treatment demonstrates antibody specificity. Western blot analysis of Cyclin B2 using with Cyclin B2 Monoclonal Antibody (X29.2) (Product # MA1-156) shows an induction upon doxorubicin treatment in HeLa and Nocodazole treatment in MCF7. {TM}



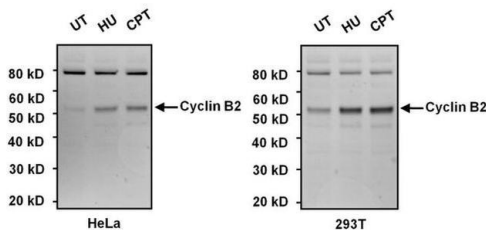
Cyclin B2 Antibody (MA1-156) in WB

Western blot analysis was performed on whole cell extract (30 µg lysate) of HeLa (Lane 1), HeLa treated with Doxorubicin (0.5uM, 24 hrs) (Lane 2), MCF7 (Lane 3), MCF7 treated with Nocodazole (50ng/ml, 24 hrs) (Lane 4), COS-7 (Lane 5), A431 (Lane 6) and Jeko1 (Lane 7). The blot was probed with Anti-Cyclin B2 Monoclonal Antibody (X29.2) (Product # MA1-156, 1:1000 dilution) and detected by chemiluminescence using Goat anti-Mouse IgG (H+L) Superclonal™ Secondary Antibody, HRP conjugate (Product # A28177, 0.25 µg/ml, 1:4000 dilution). A 52 kDa band corresponding to Cyclin B2 was observed in all cell lines tested and was enhanced upon treatments.



Cyclin B2 Antibody (MA1-156) in WB

Western blot analysis of Cyclin B2 was performed by loading 10 µg of HeLa and HEK293T cell lysates from cells left untreated or treated with 2mM hydroxyurea, or 100 nM camptothecin for 16 hours per lane onto a 4-12% Bis-Tris polyacrylamide gel. Proteins were transferred to a nitrocellulose membrane and blocked with 5% BSA in TBST for at least 1 hour. The membrane was probed with a Cyclin B2 monoclonal antibody (Product # MA1-156) at a dilution of 1:1000 overnight at 4°C on a rocking platform, washed in TBST, and probed with an HRP-conjugated goat anti-mouse IgG secondary antibody (Product # 31430) at a dilution of 1:20,000 for 1 hour. Chemiluminescent detection was performed using SuperSignal West Dura (Product # 34076).



View more figures on thermofisher.com

For Research Use Only. Not for use in diagnostic procedures. Not for resale without express authorization. Products are warranted to operate or perform substantially in conformance with published Product specifications in effect at the time of sale, as set forth in the Production documentation, specifications and/or accompanying package inserts ("Documentation"). No claim of suitability for use in applications regulated by FDA is made. The warranty provided herein is valid only when used by properly trained individuals. Unless otherwise stated in the Documentation, this warranty is limited to one year from date of shipment when the Product is subjected to normal, proper and intended usage. This warranty does not extend to anyone other than the Buyer. Any model or sample furnished to Buyer is merely illustrative of the general type and quality of goods and does not represent that any Product will conform to such model or sample. NO OTHER WARRANTIES, EXPRESS OR IMPLIED, ARE GRANTED INCLUDING WITHOUT LIMITATION, IMPLIED WARRANTIES OF MERCHANTABILITY, FITNESS FOR ANY PARTICULAR PURPOSE, OR NON-INFRINGEMENT. BUYER'S EXCLUSIVE REMEDY FOR NON-CONFORMING PRODUCTS DURING THE WARRANTY PERIOD IS LIMITED TO REPAIR, REPLACEMENT OF OR REFUND FOR THE NON-CONFORMING PRODUCT(S) AT SELLER'S SOLE OPTION. THERE IS NO OBLIGATION TO REPAIR, REPLACE OR REFUND FOR PRODUCTS AS THE RESULT OF (i) ACCIDENT, DISASTER OR EVENT OF FORCE MAJEURE, (ii) MISUSE, FAULT OR NEGLIGENCE OF OR BY BUYER, (iii) USE OF THE PRODUCTS IN A MANNER FOR WHICH THEY WERE NOT DESIGNED, OR (iv) IMPROPER STORAGE AND HANDLING OF THE PRODUCTS. Unless otherwise expressly stated on the Product or in the documentation accompanying the Product, the Product is intended for research only and is not to be used for any other purpose, including without limitation, unauthorized commercial uses, in vitro diagnostic uses, ex vivo or in vivo therapeutic uses, or any type of consumption by or application to human or animals.