

ATP1B1 Monoclonal Antibody (464.8 (aka 8A))

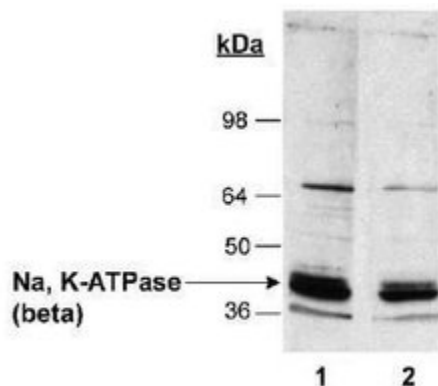
Product Details	
Size	100 µL
Species Reactivity	Bovine, Dog, Hamster, Human, Pig, Rabbit, Rat, Xenopus
Published Species	Human
Host/Isotope	Mouse / IgG2a, kappa
Class	Monoclonal
Type	Antibody
Clone	464.8 (aka 8A)
Conjugate	Unconjugated
Immunogen	Purified Na,K-ATPase from rabbit renal outer medulla.
Form	Liquid
Concentration	Conc. Not Determined
Storage buffer	ascites
Contains	0.02% sodium azide
Storage Conditions	-20° C, Avoid Freeze/Thaw Cycles
RRID	AB_2060998

Applications	Tested Dilution	Publications
Immunocytochemistry (ICC)	1:500-1:1000	-
Immunofluorescence (IF)	1:500-1:1000	-
Immunohistochemistry (Paraffin) (IHC (P))	Assay-Dependent	-
Western Blot (WB)	1:1000-1:5000	2 Publications

Product Specific Information

This antibody does not react with mouse samples.

Product Images For ATP1B1 Monoclonal Antibody (464.8 (aka 8A))



ATP1B1 Antibody (MA1-16732) in WB

Western Blot detection of Na, K-ATPase (beta) in rat kidney homogenates (20 µg) using Product # MA1-16732. Lane 1: 1:2,500 primary. Lane 2: 1:5,000 primary.

[View more figures on thermofisher.com](#)

2 References

Western Blot (2)

Hypertension in pregnancy

Na, K-ATPase and Ca²⁺-ATPase activities in basal and microvillous syncytiotrophoblast membranes from preeclamptic human term placenta.

"MA1-16732 was used in immunohistochemistry - paraffin section and western blot to evaluate the effect of preeclampsia on the activity and expression of the ion pump ATPases in syncytiotrophoblast"

Authors: Abad C, Vallejos C, De Gregorio N, Díaz P, Chiarello DI, Mendoza M, Piñero S, Proverbio T, Botana D, Rojas P, Riquelme G, Proverbio F, Marín R

Species
Human

Dilution
1:1000

Year
2015

The Journal of neuroscience : the official journal of the Society for Neuroscience

Voltage-gated Na⁺ channel 1B: a secreted cell adhesion molecule involved in human epilepsy.

"MA1-16732 was used in western blot and western blot to investigate the effect of sodium channel beta 1B on human epilepsy phenotype"

Authors: Patino GA, Brackenbury WJ, Bao Y, Lopez-Santiago LF, O'Malley HA, Chen C, Calhoun JD, Lafrenière RG, Cossette P, Rouleau GA, Isom LL

Species
Not Applicable

Dilution
Not Cited

Year
2011

For Research Use Only. Not for use in diagnostic procedures. Not for resale without express authorization. Products are warranted to operate or perform substantially in conformance with published Product specifications in effect at the time of sale, as set forth in the Production documentation, specifications and/or accompanying package inserts ("Documentation"). No claim of suitability for use in applications regulated by FDA is made. The warranty provided herein is valid only when used by properly trained individuals. Unless otherwise stated in the Documentation, this warranty is limited to one year from date of shipment when the Product is subjected to normal, proper and intended usage. This warranty does not extend to anyone other than the Buyer. Any model or sample furnished to Buyer is merely illustrative of the general type and quality of goods and does not represent that any Product will conform to such model or sample. NO OTHER WARRANTIES, EXPRESS OR IMPLIED, ARE GRANTED INCLUDING WITHOUT LIMITATION, IMPLIED WARRANTIES OF MERCHANTABILITY, FITNESS FOR ANY PARTICULAR PURPOSE, OR NON INFRINGEMENT. BUYER'S EXCLUSIVE REMEDY FOR NON-CONFORMING PRODUCTS DURING THE WARRANTY PERIOD IS LIMITED TO REPAIR, REPLACEMENT OF OR REFUND FOR THE NON-CONFORMING PRODUCT(S) AT SELLER'S SOLE OPTION. THERE IS NO OBLIGATION TO REPAIR, REPLACE OR REFUND FOR PRODUCTS AS THE RESULT OF (I) ACCIDENT, DISASTER OR EVENT OF FORCE MAJEURE, (II) MISUSE, FAULT OR NEGLIGENCE OF OR BY BUYER, (III) USE OF THE PRODUCTS IN A MANNER FOR WHICH THEY WERE NOT DESIGNED, OR (IV) IMPROPER STORAGE AND HANDLING OF THE PRODUCTS. Unless otherwise expressly stated on the Product or in the documentation accompanying the Product, the Product is intended for research only and is not to be used for any other purpose, including without limitation, unauthorized commercial uses, in vitro diagnostic uses, ex vivo or in vivo therapeutic uses, or any type of consumption by or application to human or animals.