

Calcium Sensing Receptor Monoclonal Antibody (HL 1499)

Product Details	
Size	100 µL
Species Reactivity	Human, Mouse, Rabbit, Rat
Published Species	Rat, Mouse
Host/Isotope	Mouse / IgG1, kappa
Class	Monoclonal
Type	Antibody
Clone	HL 1499
Conjugate	Unconjugated
Immunogen	N-terminal extracellular region of the human Calcium Sensing Receptor.
Form	Liquid
Concentration	1 mg/mL
Purification	Protein G
Storage buffer	tris glycine with 0.15M NaCl
Contains	0.05% sodium azide
Storage Conditions	-20°C or -80°C if preferred
RRID	AB_2071589

Applications	Tested Dilution	Publications
ELISA (ELISA)	1:100-1:2000	-
Flow Cytometry (Flow)	1 µg/1x10 ⁶ cells	-
Immunocytochemistry (ICC)	1:50-1:200	-
Immunofluorescence (IF)	1:50-1:200	1 Publication
Immunohistochemistry (Frozen) (IHC (F))	1:50-1:200	-
Western Blot (WB)	1:50-1:200	1 Publication
Immunohistochemistry (Paraffin) (IHC (P))	-	1 Publication

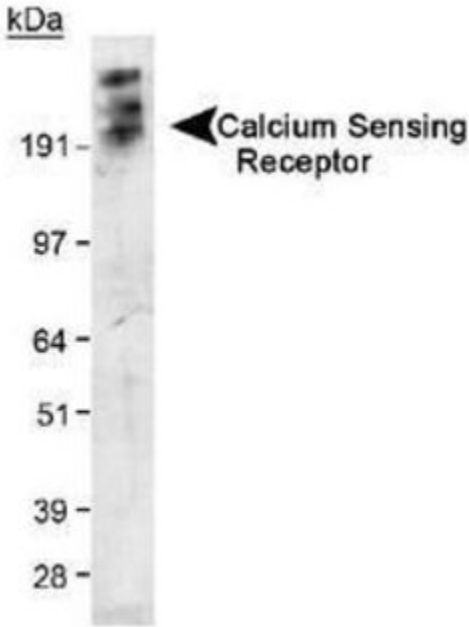
Product Specific Information

Suggested positive control: antigen standard for CASR (transient overexpression lysate), human kidney protein.

Product Images For Calcium Sensing Receptor Monoclonal Antibody (HL 1499)

Calcium Sensing Receptor Antibody (MA1-16940) in WB

Detection of Calcium Sensing Receptor in transfected 293 cell lysate using Product # MA1-16940. ECL exposure, 5 minutes. In this photo, the protein has aggregated and thus the higher MW band as expected.



Western Blot (1)

Frontiers in molecular neuroscience

Calcium-Sensing Receptor Is Functionally Expressed in the Cochlear Perilymphatic Compartment and Essential for Hearing.

"MA1-16940 was used in Western Blotting to study the functional expression of calcium-sensing receptor in cochlear physiology."

Authors: Minakata T, Inagaki A, Yamamura A, Yamamura H, Sekiya S, Murakami S

Species
Rat

Dilution
1:300

Year
2020

Immunofluorescence (1)

PloS one

Peripheral serotonin regulates maternal calcium trafficking in mammary epithelial cells during lactation in mice.

"MA1-16940 was used in immunohistochemistry - paraffin section to investigate how serotonin regulates calcium during lactation"

Authors: Laporta J, Keil KP, Vezina CM, Hernandez LL

Species
Mouse
Not Applicable

Dilution
1:100
Not Cited

Year
2015

Immunohistochemistry (Paraffin) (1)

PloS one

Peripheral serotonin regulates maternal calcium trafficking in mammary epithelial cells during lactation in mice.

"MA1-16940 was used in immunohistochemistry - paraffin section to investigate how serotonin regulates calcium during lactation"

Authors: Laporta J, Keil KP, Vezina CM, Hernandez LL

Species
Mouse
Not Applicable

Dilution
1:100
Not Cited

Year
2015

For Research Use Only. Not for use in diagnostic procedures. Not for resale without express authorization. Products are warranted to operate or perform substantially in conformance with published Product specifications in effect at the time of sale, as set forth in the Production documentation, specifications and/or accompanying package inserts ("Documentation"). No claim of suitability for use in applications regulated by FDA is made. The warranty provided herein is valid only when used by properly trained individuals. Unless otherwise stated in the Documentation, this warranty is limited to one year from date of shipment when the Product is subjected to normal, proper and intended usage. This warranty does not extend to anyone other than the Buyer. Any model or sample furnished to Buyer is merely illustrative of the general type and quality of goods and does not represent that any Product will conform to such model or sample. NO OTHER WARRANTIES, EXPRESS OR IMPLIED, ARE GRANTED INCLUDING WITHOUT LIMITATION, IMPLIED WARRANTIES OF MERCHANTABILITY, FITNESS FOR ANY PARTICULAR PURPOSE, OR NON INFRINGEMENT. BUYER'S EXCLUSIVE REMEDY FOR NON-CONFORMING PRODUCTS DURING THE WARRANTY PERIOD IS LIMITED TO REPAIR, REPLACEMENT OF OR REFUND FOR THE NON-CONFORMING PRODUCT(S) AT SELLER'S SOLE OPTION. THERE IS NO OBLIGATION TO REPAIR, REPLACE OR REFUND FOR PRODUCTS AS THE RESULT OF (I) ACCIDENT, DISASTER OR EVENT OF FORCE MAJEURE, (II) MISUSE, FAULT OR NEGLIGENCE OF OR BY BUYER, (III) USE OF THE PRODUCTS IN A MANNER FOR WHICH THEY WERE NOT DESIGNED, OR (IV) IMPROPER STORAGE AND HANDLING OF THE PRODUCTS. Unless otherwise expressly stated on the Product or in the documentation accompanying the Product, the Product is intended for research only and is not to be used for any other purpose, including without limitation, unauthorized commercial uses, in vitro diagnostic uses, ex vivo or in vivo therapeutic uses, or any type of consumption by or application to human or animals.