

DR4 Monoclonal Antibody (DR-4-02)

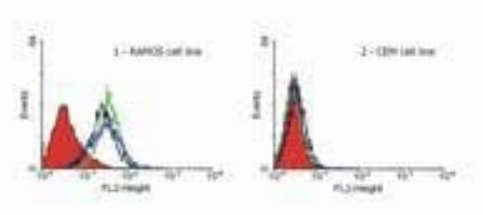
Product Details	
Size	100 µg
Species Reactivity	Human
Published Species	Human
Host/Isotope	Mouse / IgG1
Class	Monoclonal
Type	Antibody
Clone	DR-4-02
Conjugate	Unconjugated
Immunogen	Fusion protein containing the extracellular part of TRAIL-R1 and the constant part of the heavy chain of the human IgG1.
Form	Liquid
Concentration	1 mg/mL
Purification	Protein A
Storage buffer	PBS, pH 7.4
Contains	no preservative
Storage Conditions	4° C, do not freeze
RRID	AB_1088003

Applications	Tested	Dilution	Published
Immunocytochemistry (ICC)	✓	Assay Dependent	1 Publication
Flow Cytometry (Flow)	✓	3-5 µg/mL	
Functional Assay (FN)	✓	Assay Dependent	
Immunoprecipitation (IP)	✓	Assay Dependent	

Product Specific Information

Endotoxin level is less than 0.01 EU/ug of the protein, as determined by the LAL test.

Product Images For DR4 Monoclonal Antibody (DR-4-02)



DR4 Antibody (MA1-19025) in Flow

Flow cytometry analysis of DR4 using a monoclonal antibody (Product # MA1-19025).

1 Reference

Immunocytochemistry (1)

Carcinogenesis

Cisplatin and a potent platinum(IV) complex-mediated enhancement of TRAIL-induced cancer cells killing is associated with modulation of upstream events in the extrinsic apoptotic pathway.

"MA1-19025 was used in immunocytochemistry to investigate the role of upstream events in the extrinsic apoptotic pathway for cisplatin and a potent platinum (IV) complex-mediated enhancement of TRAIL-induced cancer cells killing"

Authors: Vondálová Blanárová O, Jelínková I, Szöör A, Skender B, Soucek K, Horváth V, Vaculová A, Andera L, Sova P, Szöllosi J, Hofmanová J, Vereb G, Kozubík A

Species
Human

Dilution
15 ug/ml

Year
2011

For Research Use Only. Not for use in diagnostic procedures. Not for resale without express authorization. Products are warranted to operate or perform substantially in conformance with published Product specifications in effect at the time of sale, as set forth in the Production documentation, specifications and/or accompanying package inserts ("Documentation"). No claim of suitability for use in applications regulated by FDA is made. The warranty provided herein is valid only when used by properly trained individuals. Unless otherwise stated in the Documentation, this warranty is limited to one year from date of shipment when the Product is subjected to normal, proper and intended usage. This warranty does not extend to anyone other than the Buyer. Any model or sample furnished to Buyer is merely illustrative of the general type and quality of goods and does not represent that any Product will conform to such model or sample. NO OTHER WARRANTIES, EXPRESS OR IMPLIED, ARE GRANTED INCLUDING WITHOUT LIMITATION, IMPLIED WARRANTIES OF MERCHANTABILITY, FITNESS FOR ANY PARTICULAR PURPOSE, OR NON INFRINGEMENT. BUYER'S EXCLUSIVE REMEDY FOR NON-CONFORMING PRODUCTS DURING THE WARRANTY PERIOD IS LIMITED TO REPAIR, REPLACEMENT OF OR REFUND FOR THE NON-CONFORMING PRODUCT(S) AT SELLER'S SOLE OPTION. THERE IS NO OBLIGATION TO REPAIR, REPLACE OR REFUND FOR PRODUCTS AS THE RESULT OF (I) ACCIDENT, DISASTER OR EVENT OF FORCE MAJEURE, (II) MISUSE, FAULT OR NEGLIGENCE OF OR BY BUYER, (III) USE OF THE PRODUCTS IN A MANNER FOR WHICH THEY WERE NOT DESIGNED, OR (IV) IMPROPER STORAGE AND HANDLING OF THE PRODUCTS. Unless otherwise expressly stated on the Product or in the documentation accompanying the Product, the Product is intended for research only and is not to be used for any other purpose, including without limitation, unauthorized commercial uses, in vitro diagnostic uses, ex vivo or in vivo therapeutic uses, or any type of consumption by or application to human or animals.