

ICAM-1 Monoclonal Antibody (1H4)

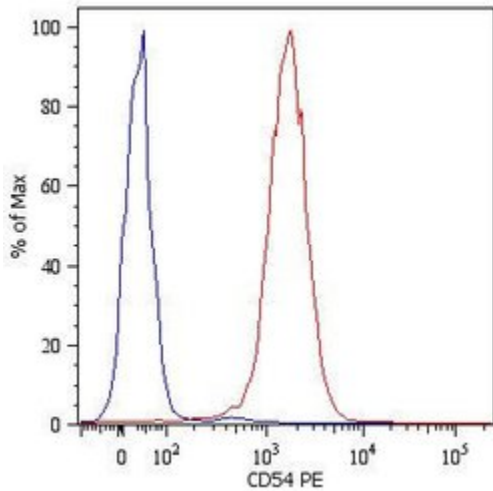
Product Details	
Size	100 µg
Species Reactivity	Human
Published Species	Rat, Human
Host/Isotype	Mouse / IgG2b
Class	Monoclonal
Type	Antibody
Clone	1H4
Conjugate	Unconjugated
Immunogen	Raji cells and spleen cells fused with NS1 cells.
Form	Liquid
Concentration	1 mg/mL
Purification	Protein A
Storage buffer	PBS, pH 7.4
Contains	no preservative
Storage conditions	4° C, do not freeze
RRID	AB_1072560

Applications	Tested Dilution	Publications
Western Blot (WB)	Assay-dependent	-
Immunohistochemistry (IHC)	-	2 Publications
Immunohistochemistry (Paraffin) (IHC (P))	10 µg/mL	-
Immunohistochemistry (Frozen) (IHC (F))	5-10 µg/mL	-
Immunocytochemistry (ICC/IF)	Assay-dependent	-
Flow Cytometry (Flow)	1 µg/mL	-

Product Specific Information

For IHC (P), prolonged fixation in buffered formalin can destroy the epitope. High temperature antigen unmasking technique is required.

Product Images For ICAM-1 Monoclonal Antibody (1H4)



ICAM-1 Antibody (MA1-19028) in Flow

Flow cytometry surface staining of U937 human histiocytic lymphoma cell line with anti-human CD54 monoclonal antibody (Product # MA1-19028). Total viable cells were used for analysis.

2 References

Immunohistochemistry (2)

Cell and tissue research

Interaction between adipose tissue stromal cells and gastric cancer cells in vitro.

"MA1-19028 was used in immunohistochemistry to study the in vitro interaction between adipose tissue stromal cells and gastric cancer cells"

Authors: Nomoto-Kojima N,Aoki S,Uchihashi K,Matsunobu A,Koike E,Ootani A,Yonemitsu N,Fujimoto K,Toda S

Species
Human

Dilution
Not Cited

Year
2011

Kidney international

Adipose tissue explants and MDCK cells reciprocally regulate their morphogenesis in coculture.

"MA1-19028 was used in immunohistochemistry to study the reciprocal regulation of morphogenesis in co-cultures of adipose tissue explants and MDCK cells"

Authors: Udo K,Aoki S,Uchihashi K,Kawasaki M,Matsunobu A,Tokuda Y,Ootani A,Toda S,Uozumi J

Species
Rat

Dilution
Not Cited

Year
2010

For Research Use Only. Not for use in diagnostic procedures. Not for resale without express authorization. Products are warranted to operate or perform substantially in conformance with published Product specifications in effect at the time of sale, as set forth in the Production documentation, specifications and/or accompanying package inserts ("Documentation"). No claim of suitability for use in applications regulated by FDA is made. The warranty provided herein is valid only when used by properly trained individuals. Unless otherwise stated in the Documentation, this warranty is limited to one year from date of shipment when the Product is subjected to normal, proper and intended usage. This warranty does not extend to anyone other than the Buyer. Any model or sample furnished to Buyer is merely illustrative of the general type and quality of goods and does not represent that any Product will conform to such model or sample. NO OTHER WARRANTIES, EXPRESS OR IMPLIED, ARE GRANTED INCLUDING WITHOUT LIMITATION, IMPLIED WARRANTIES OF MERCHANTABILITY, FITNESS FOR ANY PARTICULAR PURPOSE, OR NON INFRINGEMENT. BUYER'S EXCLUSIVE REMEDY FOR NON-CONFORMING PRODUCTS DURING THE WARRANTY PERIOD IS LIMITED TO REPAIR, REPLACEMENT OF OR REFUND FOR THE NON-CONFORMING PRODUCT(S) AT SELLER'S SOLE OPTION. THERE IS NO OBLIGATION TO REPAIR, REPLACE OR REFUND FOR PRODUCTS AS THE RESULT OF (I) ACCIDENT, DISASTER OR EVENT OF FORCE MAJEURE, (II) MISUSE, FAULT OR NEGLIGENCE OF OR BY BUYER, (III) USE OF THE PRODUCTS IN A MANNER FOR WHICH THEY WERE NOT DESIGNED, OR (IV) IMPROPER STORAGE AND HANDLING OF THE PRODUCTS. Unless otherwise expressly stated on the Product or in the documentation accompanying the Product, the Product is intended for research only and is not to be used for any other purpose, including without limitation, unauthorized commercial uses, in vitro diagnostic uses, ex vivo or in vivo therapeutic uses, or any type of consumption by or application to human or animals.