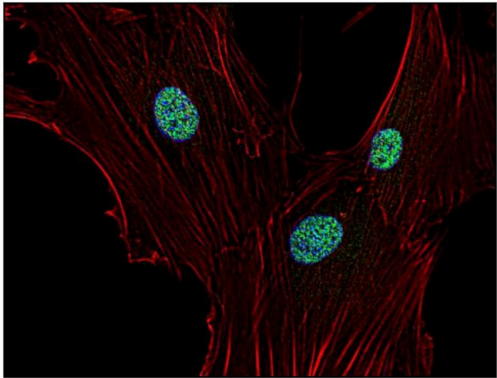


# p21 Monoclonal Antibody (WA-1)

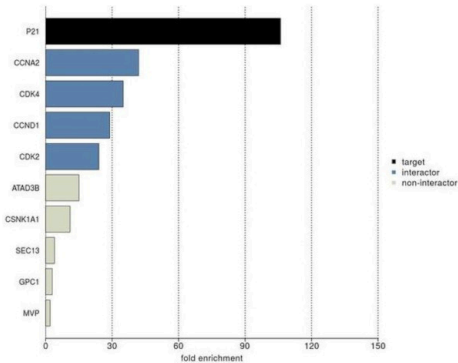
Product Details	
Size	100 µg
Species Reactivity	Human, Non-human primate
Published Species	Human
Host/Isotype	Mouse / IgG1
Class	Monoclonal
Type	Antibody
Clone	WA-1
Conjugate	Unconjugated
Immunogen	Human p21 protein..
Form	Liquid
Concentration	1 mg/mL
Purification	Protein A
Storage buffer	PBS, pH 7.4
Contains	15mM sodium azide
Storage conditions	4° C, do not freeze
RRID	AB_1075236

Applications	Tested Dilution	Publications
Western Blot (WB)	-	1 Publication
Immunohistochemistry (Paraffin) (IHC (P))	Assay-dependent	-
Immunocytochemistry (ICC/IF)	Assay-dependent	-
ELISA (ELISA)	Assay-dependent	-

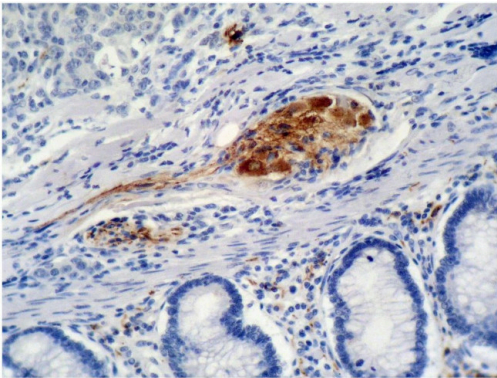
Product Images For p21 Monoclonal Antibody (WA-1)



**p21 Antibody (MA1-19271) in ICC/IF**  
Immunocytochemistry staining of p21 in human primary fibroblasts using anti-p21 (WA-1; green) Monoclonal antibody (Product # MA1-19271). Actin cytoskeleton decorated by phalloidin (red) and cell nuclei stained with DAPI (blue).



**p21 Antibody (MA1-19271)**  
IP-MS enrichment of P21 (LFQ intensity): P21 was enriched 106-fold from HCT116 lysate compared to background proteins, using the optimized IP-MS workflow with Pierce MS-Compatible Magnetic IP Kit protein A/G (Product # 90409) and P21 antibody (Product # MA1-19271). The STRING database ([www.string-db.org](http://www.string-db.org)) was used to identify the protein interactor list. See more information on IP-MS verification of antibody selectivity. {IP-MS}



**p21 Antibody (MA1-19271) in IHC (P)**  
Immunohistochemistry staining of colon carcinoma (paraffin-embedded sections) with anti-p21 (WA-1) Monoclonal antibody (Product # MA1-19271).

1 Reference

Western Blot (1)

Cell proliferation

Cyclin-dependent kinase inhibitors and basement membrane interact to regulate breast epithelial cell differentiation and acinar morphogenesis.

"MA1-19271 was used in western blot to study the role of cyclin-dependent kinase inhibitors and the basement membrane in regulating breast epithelial cell differentiation"

Authors: Coppock HA,Gilham DE,Howell A,Clarke RB

Year  
2007

Species  
Human

For Research Use Only. Not for use in diagnostic procedures. Not for resale without express authorization. Products are warranted to operate or perform substantially in conformance with published Product specifications in effect at the time of sale, as set forth in the Production documentation, specifications and/or accompanying package inserts ("Documentation"). No claim of suitability for use in applications regulated by FDA is made. The warranty provided herein is valid only when used by properly trained individuals. Unless otherwise stated in the Documentation, this warranty is limited to one year from date of shipment when the Product is subjected to normal, proper and intended usage. This warranty does not extend to anyone other than the Buyer. Any model or sample furnished to Buyer is merely illustrative of the general type and quality of goods and does not represent that any Product will conform to such model or sample. NO OTHER WARRANTIES, EXPRESS OR IMPLIED, ARE GRANTED INCLUDING WITHOUT LIMITATION, IMPLIED WARRANTIES OF MERCHANTABILITY, FITNESS FOR ANY PARTICULAR PURPOSE, OR NON-INFRINGEMENT. BUYER'S EXCLUSIVE REMEDY FOR NON-CONFORMING PRODUCTS DURING THE WARRANTY PERIOD IS LIMITED TO REPAIR, REPLACEMENT OF OR REFUND FOR THE NON-CONFORMING PRODUCT(S) AT SELLER'S SOLE OPTION. THERE IS NO OBLIGATION TO REPAIR, REPLACE OR REFUND FOR PRODUCTS AS THE RESULT OF (I) ACCIDENT, DISASTER OR EVENT OF FORCE MAJEURE, (II) MISUSE, FAULT OR NEGLIGENCE OF OR BY BUYER, (III) USE OF THE PRODUCTS IN A MANNER FOR WHICH THEY WERE NOT DESIGNED, OR (IV) IMPROPER STORAGE AND HANDLING OF THE PRODUCTS. Unless otherwise expressly stated on the Product or in the documentation accompanying the Product, the Product is intended for research only and is not to be used for any other purpose, including without limitation, unauthorized commercial uses, in vitro diagnostic uses, ex vivo or in vivo therapeutic uses, or any type of consumption by or application to human or animals.