

HLA-G Monoclonal Antibody (MEM-G/4)

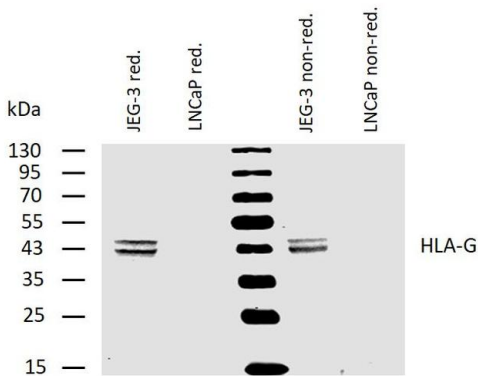
Product Details	
Size	100 µg
Species Reactivity	Human
Published Species	Mouse, Human
Host/Isotype	Mouse / IgG1
Class	Monoclonal
Type	Antibody
Clone	MEM-G/4
Conjugate	Unconjugated
Immunogen	Recombinant human HLA-G denaturated heavy chain.
Form	Liquid
Concentration	1 mg/mL
Purification	Protein A
Storage buffer	PBS, pH 7.4
Contains	15mM sodium azide
Storage conditions	4° C, do not freeze
RRID	AB_1076744

Applications	Tested Dilution	Publications
Western Blot (WB)	1-2 µg/mL	2 Publications

Product Specific Information

This antibody reacts with denaturated HLA-G heavy chain.

Product Images For HLA-G Monoclonal Antibody (MEM-G/4)



HLA-G Antibody (MA1-19358) in WB

Western blotting analysis of human HLA-G using mouse monoclonal antibody MEM-G/4 on lysates of JEG-3 cell line and LNCaP cell line (negative control) under reducing and non-reducing conditions. Nitrocellulose membrane was probed with 2µg/mL of mouse monoclonal antibody anti-HLA-G (Product # MA1-19358) followed by IRDye800-conjugated anti-mouse secondary antibody. Specific bands were detected for HLA-G at approximately 42-46kDa.

Western Blot (2)

<p>Molecular human reproduction</p> <p>ZEB2, a master regulator of the epithelial-mesenchymal transition, mediates trophoblast differentiation.</p> <p>Authors: DaSilva-Arnold SC,Kuo CY,Davra V,Remache Y,Kim PCW,Fisher JP,Zamudio S,Al-Khan A,Birge RB,Illsley NP</p>	<p>Year 2019</p> <p>Species Mouse</p> <p>Dilution 1:500</p>
<p>Oncoimmunology</p> <p>Clinical relevance of miR-mediated HLA-G regulation and the associated immune cell infiltration in renal cell carcinoma.</p> <p>"MA1-19358 was used in Western Blot to show the association between a distinct pattern of immune cell infiltration with miR-mediated control of HLA-G expression in renal cell carcinoma."</p> <p>Authors: Jasinski-Bergner S,Stoehr C,Bukur J,Massa C,Braun J,Hüttelmaier S,Spath V,Wartenberg R,Legal W,Taubert H,Wach S,Wullich B,Hartmann A,Seliger B</p>	<p>Year 2015</p> <p>Species Human</p>

For Research Use Only. Not for use in diagnostic procedures. Not for resale without express authorization. Products are warranted to operate or perform substantially in conformance with published Product specifications in effect at the time of sale, as set forth in the Production documentation, specifications and/or accompanying package inserts ("Documentation"). No claim of suitability for use in applications regulated by FDA is made. The warranty provided herein is valid only when used by properly trained individuals. Unless otherwise stated in the Documentation, this warranty is limited to one year from date of shipment when the Product is subjected to normal, proper and intended usage. This warranty does not extend to anyone other than the Buyer. Any model or sample furnished to Buyer is merely illustrative of the general type and quality of goods and does not represent that any Product will conform to such model or sample. NO OTHER WARRANTIES, EXPRESS OR IMPLIED, ARE GRANTED INCLUDING WITHOUT LIMITATION, IMPLIED WARRANTIES OF MERCHANTABILITY, FITNESS FOR ANY PARTICULAR PURPOSE, OR NON INFRINGEMENT. BUYER'S EXCLUSIVE REMEDY FOR NON-CONFORMING PRODUCTS DURING THE WARRANTY PERIOD IS LIMITED TO REPAIR, REPLACEMENT OF OR REFUND FOR THE NON-CONFORMING PRODUCT(S) AT SELLER'S SOLE OPTION. THERE IS NO OBLIGATION TO REPAIR, REPLACE OR REFUND FOR PRODUCTS AS THE RESULT OF (i) ACCIDENT, DISASTER OR EVENT OF FORCE MAJEURE, (ii) MISUSE, FAULT OR NEGLIGENCE OF OR BY BUYER, (iii) USE OF THE PRODUCTS IN A MANNER FOR WHICH THEY WERE NOT DESIGNED, OR (iv) IMPROPER STORAGE AND HANDLING OF THE PRODUCTS. Unless otherwise expressly stated on the Product or in the documentation accompanying the Product, the Product is intended for research only and is not to be used for any other purpose, including without limitation, unauthorized commercial uses, in vitro diagnostic uses, ex vivo or in vivo therapeutic uses, or any type of consumption by or application to human or animals.