

# HLA-G Monoclonal Antibody (MEM-G/2)

## Product Details

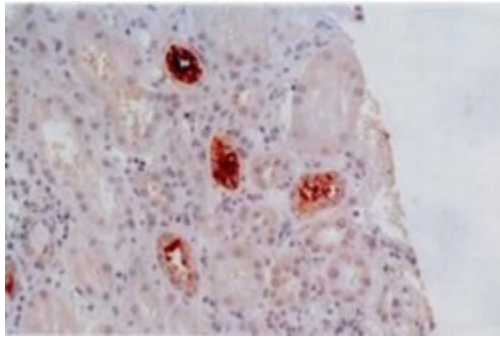
Size	100 µg
Species Reactivity	Human
Host/Isotype	Mouse / IgG1
Class	Monoclonal
Type	Antibody
Clone	MEM-G/2
Conjugate	Unconjugated
Immunogen	Bacterially expressed recombinant HLA-G heavy chain (denatured)
Form	Liquid
Concentration	1 mg/mL
Purification	Chromatography
Storage buffer	PBS, pH 7.4
Contains	15mM sodium azide
Storage Conditions	4° C, do not freeze
RRID	AB_1076746

Applications	Tested Dilution	Publications
Immunohistochemistry (Frozen) (IHC (F))	Assay-Dependent	-
Immunohistochemistry (Paraffin) (IHC (P))	Assay Dependent	-
Western Blot (WB)	Assay Dependent	-
Miscellaneous PubMed (Misc)	-	1 Publication

## Product Specific Information

This antibody recognizes the free heavy chain of all the HLA-G isoforms.

## Product Images For HLA-G Monoclonal Antibody (MEM-G/2)



### HLA-G Antibody (MA1-19394) in IHC

Immunohistochemical analysis of HLA-G using a monoclonal antibody (Product # MA1-19394).

## 1 Reference

### Miscellaneous PubMed (1)

Journal of cell science

#### Three mammalian SCAMPs (secretory carrier membrane proteins) are highly related products of distinct genes having similar subcellular distributions.

"MA1-19394 was used in immunocytochemistry and western blot to study the expression and distribution of three secretory carrier membrane proteins"

Authors: Singleton DR,Wu TT,Castle JD

**Species**

Not Applicable

**Dilution**

Not Cited

**Year**

1997

For Research Use Only. Not for use in diagnostic procedures. Not for resale without express authorization. Products are warranted to operate or perform substantially in conformance with published Product specifications in effect at the time of sale, as set forth in the Production documentation, specifications and/or accompanying package inserts ("Documentation"). No claim of suitability for use in applications regulated by FDA is made. The warranty provided herein is valid only when used by properly trained individuals. Unless otherwise stated in the Documentation, this warranty is limited to one year from date of shipment when the Product is subjected to normal, proper and intended usage. This warranty does not extend to anyone other than the Buyer. Any model or sample furnished to Buyer is merely illustrative of the general type and quality of goods and does not represent that any Product will conform to such model or sample. NO OTHER WARRANTIES, EXPRESS OR IMPLIED, ARE GRANTED INCLUDING WITHOUT LIMITATION, IMPLIED WARRANTIES OF MERCHANTABILITY, FITNESS FOR ANY PARTICULAR PURPOSE, OR NON-INFRINGEMENT. BUYER'S EXCLUSIVE REMEDY FOR NON-CONFORMING PRODUCTS DURING THE WARRANTY PERIOD IS LIMITED TO REPAIR, REPLACEMENT OF OR REFUND FOR THE NON-CONFORMING PRODUCT(S) AT SELLER'S SOLE OPTION. THERE IS NO OBLIGATION TO REPAIR, REPLACE OR REFUND FOR PRODUCTS AS THE RESULT OF (I) ACCIDENT, DISASTER OR EVENT OF FORCE MAJEURE, (II) MISUSE, FAULT OR NEGLIGENCE OF OR BY BUYER, (III) USE OF THE PRODUCTS IN A MANNER FOR WHICH THEY WERE NOT DESIGNED, OR (IV) IMPROPER STORAGE AND HANDLING OF THE PRODUCTS. Unless otherwise expressly stated on the Product or in the documentation accompanying the Product, the Product is intended for research only and is not to be used for any other purpose, including without limitation, unauthorized commercial uses, in vitro diagnostic uses, ex vivo or in vivo therapeutic uses, or any type of consumption by or application to human or animals.