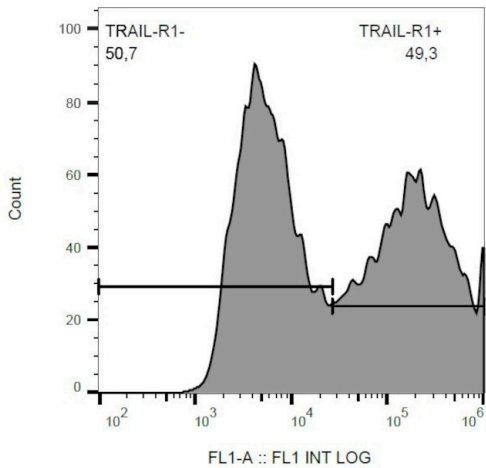


DR4 Monoclonal Antibody (DR-4-02), FITC

Product Details	
Size	100 µg
Species Reactivity	Human
Published Species	Human
Host/Isotype	Mouse / IgG1
Class	Monoclonal
Type	Antibody
Clone	DR-4-02
Conjugate	FITC
Excitation/Emission Max	498/517 nm
Immunogen	Fusion protein containing the extracellular part of TRAIL-R1 and the constant part of the heavy chain of the human IgG1.
Form	Liquid
Concentration	0.1 mg/mL
Purification	Size-exclusion chromatography
Storage buffer	PBS, pH 7.4, with 0.2% BSA
Contains	15mM sodium azide
Storage conditions	4° C, store in dark, DO NOT FREEZE!
RRID	AB_1955203

Applications	Tested Dilution	Publications
Flow Cytometry (Flow)	3-5 µg/mL	1 Publication

Product Images For DR4 Monoclonal Antibody (DR-4-02), FITC



DR4 Antibody (MA1-19757) in Flow
Flow cytometry analysis (surface staining) of CD261-transfected HEK-293 cells with anti-CD261/TRAIL-R1 (DR-4-02) FITC Monoclonal antibody (Product # MA1-19757).

Flow Cytometry (1)

eLife	Year 2021
Oxaliplatin resistance in colorectal cancer enhances TRAIL sensitivity via death receptor 4 upregulation and lipid raft localization.	Species Human
<p>"MA1-19757 was used in Flow Cytometry to examine whether surviving oxaliplatin-resistant subpopulations of cancer cells have an enhanced sensitivity to tumor necrosis factor-related apoptosis-inducing ligand (TRAIL) and elucidate mechanisms that drive this sensitization."</p> <p>Authors: Greenlee JD,Lopez-Cavestany M,Ortiz-Otero N,Liu K,Subramanian T,Cagir B,King MR</p>	

For Research Use Only. Not for use in diagnostic procedures. Not for resale without express authorization. Products are warranted to operate or perform substantially in conformance with published Product specifications in effect at the time of sale, as set forth in the Production documentation, specifications and/or accompanying package inserts ("Documentation"). No claim of suitability for use in applications regulated by FDA is made. The warranty provided herein is valid only when used by properly trained individuals. Unless otherwise stated in the Documentation, this warranty is limited to one year from date of shipment when the Product is subjected to normal, proper and intended usage. This warranty does not extend to anyone other than the Buyer. Any model or sample furnished to Buyer is merely illustrative of the general type and quality of goods and does not represent that any Product will conform to such model or sample. NO OTHER WARRANTIES, EXPRESS OR IMPLIED, ARE GRANTED INCLUDING WITHOUT LIMITATION, IMPLIED WARRANTIES OF MERCHANTABILITY, FITNESS FOR ANY PARTICULAR PURPOSE, OR NON INFRINGEMENT. BUYER'S EXCLUSIVE REMEDY FOR NON-CONFORMING PRODUCTS DURING THE WARRANTY PERIOD IS LIMITED TO REPAIR, REPLACEMENT OF OR REFUND FOR THE NON-CONFORMING PRODUCT(S) AT SELLER'S SOLE OPTION. THERE IS NO OBLIGATION TO REPAIR, REPLACE OR REFUND FOR PRODUCTS AS THE RESULT OF (i) ACCIDENT, DISASTER OR EVENT OF FORCE MAJEURE, (ii) MISUSE, FAULT OR NEGLIGENCE OF OR BY BUYER, (iii) USE OF THE PRODUCTS IN A MANNER FOR WHICH THEY WERE NOT DESIGNED, OR (iv) IMPROPER STORAGE AND HANDLING OF THE PRODUCTS. Unless otherwise expressly stated on the Product or in the documentation accompanying the Product, the Product is intended for research only and is not to be used for any other purpose, including without limitation, unauthorized commercial uses, in vitro diagnostic uses, ex vivo or in vivo therapeutic uses, or any type of consumption by or application to human or animals.