

Phospho-ATM (Ser1981) Monoclonal Antibody (10H11)

Product Details

Size	200 µg
Species Reactivity	Human, Mouse
Published Species	Human, Mouse
Host/Isotope	Mouse / IgG1
Class	Monoclonal
Type	Antibody
Clone	10H11
Conjugate	Unconjugated
Immunogen	Synthetic peptide corresponding to residues S(1974) L A F E E S(p) Q S T T I S S(1988) of human ATM Kinase protein.
Form	Liquid
Purification	Protein G
Storage buffer	PBS with 1mg/mL BSA
Contains	0.05% sodium azide
Storage Conditions	-20° C, Avoid Freeze/Thaw Cycles
RRID	AB_1086244

Applications	Tested	Dilution	Published
Immunocytochemistry (ICC)	✓	1:250	1 Publication
Western Blot (WB)	✓	1:500 - 1:1000	1 Publication
Immunofluorescence (IF)	✓	1:250	
Immunoprecipitation (IP)	✓	Assay dependent	

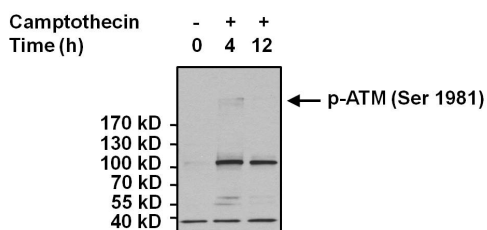
Product Specific Information

MA1-2020 detects the phospho-ATM kinase in human and mouse samples.

MA1-2020 has been successfully used in immunofluorescence, immunoprecipitation and Western blot procedures. By Western blot this antibody detects a ~370 kDa protein representing the phospho-ATM kinase in crude lysates from gamma irradiated HeLa cells. In immunofluorescence procedures, MA1-2020 recognizes the phospho-ATM kinase in irradiated human and mouse fibroblasts.

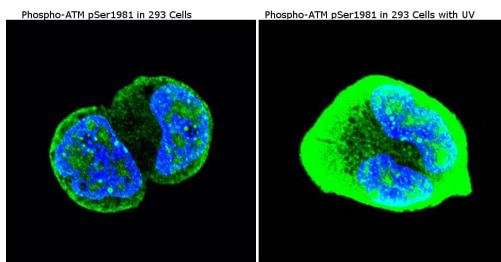
The MA1-2020 immunogen is a phosphorylated synthetic peptide corresponding to the residues S(1974) L A F E E S(p) Q S T T I S S(1988) of human ATM Kinase protein.

Advanced Verification Data



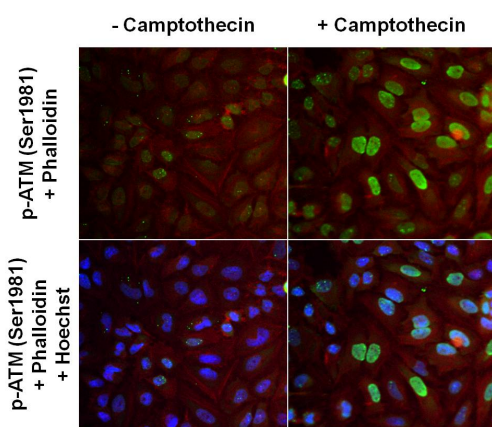
Phospho-ATM (Ser1981) Antibody (MA1-2020)

Altered expression of proteins upon cell treatment demonstrates antibody specificity. Western blot of ATM pS1981 using Anti - ATM (pS1981) mouse monoclonal antibody (catalog# MA1-2020), shows increased expression of ATM [pS1981] in HeLa cells upon camptothecin treatment. Cell Treatment validation info.



Phospho-ATM (Ser1981) Antibody (MA1-2020)

Modulation of expression of target protein by cell treatment to demonstrate antibody specificity. Immunofluorescence analysis of ATM pS1981 using anti-ATM pS1981 mouse monoclonal antibody (Catalog # MA1-2020) shows induced expression of ATM pS1981 in the nucleus of 293 cells treated with UV. Cell Treatment validation info.



Phospho-ATM (Ser1981) Antibody (MA1-2020)

Modulation of expression of target protein by cell treatment to demonstrate antibody specificity. Immunofluorescence analysis of ATM pS1981 using anti-ATM pS1981 mouse monoclonal antibody (Catalog # MA1-2020) shows induced expression of ATM pS1981 in the nucleus of HeLa cells treated with camptothecin. Cell Treatment validation info.

[View more figures on thermofisher.com](https://www.thermofisher.com)

Immunocytochemistry (1)

Genes and development

A localized nucleolar DNA damage response facilitates recruitment of the homology-directed repair machinery independent of cell cycle stage.

"MA1-2020 was used in immunocytochemistry to study the response to double-stranded breaks at the nucleolar organizer regions."

Authors: van Sluis M,McStay B

Species
Human

Dilution
Not Cited

Year
2015

Western Blot (1)

Biomaterials

2-Hydroxyethyl methacrylate-induced apoptosis through the ATM- and p53-dependent intrinsic mitochondrial pathway.

"MA1-2020 was used in western blot to study the mechanism for 2-hydroxyethyl methacrylate-induced apoptosis"

Authors: Schweikl H,Petzel C,Bolay C,Hiller KA,Buchalla W,Krifka S

Species
Mouse

Dilution
Not Cited

Year
2014

For Research Use Only. Not for use in diagnostic procedures. Not for resale without express authorization. Products are warranted to operate or perform substantially in conformance with published Product specifications in effect at the time of sale, as set forth in the Production documentation, specifications and/or accompanying package inserts ("Documentation"). No claim of suitability for use in applications regulated by FDA is made. The warranty provided herein is valid only when used by properly trained individuals. Unless otherwise stated in the Documentation, this warranty is limited to one year from date of shipment when the Product is subjected to normal, proper and intended usage. This warranty does not extend to anyone other than the Buyer. Any model or sample furnished to Buyer is merely illustrative of the general type and quality of goods and does not represent that any Product will conform to such model or sample. NO OTHER WARRANTIES, EXPRESS OR IMPLIED, ARE GRANTED INCLUDING WITHOUT LIMITATION, IMPLIED WARRANTIES OF MERCHANTABILITY, FITNESS FOR ANY PARTICULAR PURPOSE, OR NON INFRINGEMENT. BUYER'S EXCLUSIVE REMEDY FOR NON-CONFORMING PRODUCTS DURING THE WARRANTY PERIOD IS LIMITED TO REPAIR, REPLACEMENT OF OR REFUND FOR THE NON-CONFORMING PRODUCT(S) AT SELLER'S SOLE OPTION. THERE IS NO OBLIGATION TO REPAIR, REPLACE OR REFUND FOR PRODUCTS AS THE RESULT OF (I) ACCIDENT, DISASTER OR EVENT OF FORCE MAJEURE, (II) MISUSE, FAULT OR NEGLIGENCE OF OR BY BUYER, (III) USE OF THE PRODUCTS IN A MANNER FOR WHICH THEY WERE NOT DESIGNED, OR (IV) IMPROPER STORAGE AND HANDLING OF THE PRODUCTS. Unless otherwise expressly stated on the Product or in the documentation accompanying the Product, the Product is intended for research only and is not to be used for any other purpose, including without limitation, unauthorized commercial uses, in vitro diagnostic uses, ex vivo or in vivo therapeutic uses, or any type of consumption by or application to human or animals.