

pro-Brain Natriuretic Peptide Monoclonal Antibody (24E11)

Product Details	
Size	200 µg
Species Reactivity	Human
Host/Isotope	Mouse / IgG
Class	Monoclonal
Type	Antibody
Clone	24E11
Conjugate	Unconjugated
Immunogen	Synthetic peptide corresponding to residues R(61) G H R K M V L Y T L R A P R(76) of human proBNP.
Form	Liquid
Concentration	2.8 mg/mL
Purification	Protein A
Storage buffer	PBS, pH 7.4
Contains	0.09% sodium azide
Storage Conditions	4° C, do not freeze
RRID	AB_560695

Applications	Tested	Dilution	Published
ELISA (ELISA)	✓	Assay dependent	
Western Blot (WB)	✓	Assay dependent	

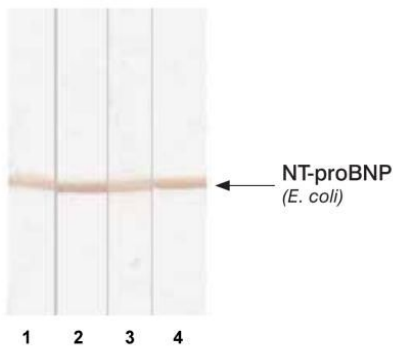
Product Specific Information

MA1-20631 detects proBNP in human samples.

MA1-20631 has been successfully used in ELISA and Western blot procedures.

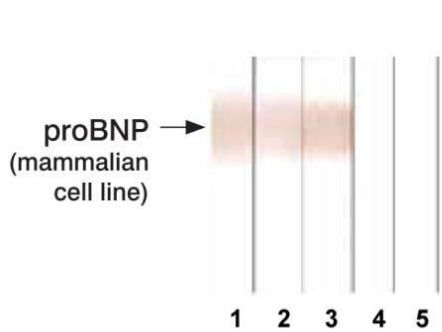
The MA1-20631 immunogen is a synthetic peptide corresponding to residues R(61) G H R K M V L Y T L R A P R(76) of human proBNP.

Product Images For pro-Brain Natriuretic Peptide Monoclonal Antibody (24E11)



pro-Brain Natriuretic Peptide Antibody (MA1-20631) in WB

Western blot analysis of pro-Brain Natriuretic Peptide in recombinant NT-proBNP using 2.5 µg of Lane 1: proBNP antibody (Product # MA1-20622); Lane 2: proBNP antibody (Product # MA1-20626); Lane 3: proBNP antibody (Product # MA1-20584); Lane 4: proBNP antibody (Product # MA1-20631) using a pro-Brain Natriuretic Peptide monoclonal antibody (Product # MA1-20631).



pro-Brain Natriuretic Peptide Antibody (MA1-20631) in WB

Western blotting by different monoclonal antibodies after Tricine-SDS gel electrophoresis. Antigen: recombinant proBNP expressed in mammalian cells, 0.15 µg; Lane 1: proBNP antibody (Product # MA1-20622); Lane 2: proBNP antibody (Product # MA1-20626); Lane 3: proBNP antibody (Product # MA1-20886); Lane 4: proBNP antibody (Product # MA1-20584); Lane 5: proBNP antibody (Product # MA1-20631); Both proBNP antibody (Product # MA1-20584) and proBNP antibody (Product # MA1-20631) do not recognize glycosylated proBNP expressed in mammalian cells.

For Research Use Only. Not for use in diagnostic procedures. Not for resale without express authorization. Products are warranted to operate or perform substantially in conformance with published Product specifications in effect at the time of sale, as set forth in the Production documentation, specifications and/or accompanying package inserts ("Documentation"). No claim of suitability for use in applications regulated by FDA is made. The warranty provided herein is valid only when used by properly trained individuals. Unless otherwise stated in the Documentation, this warranty is limited to one year from date of shipment when the Product is subjected to normal, proper and intended usage. This warranty does not extend to anyone other than the Buyer. Any model or sample furnished to Buyer is merely illustrative of the general type and quality of goods and does not represent that any Product will conform to such model or sample. NO OTHER WARRANTIES, EXPRESS OR IMPLIED, ARE GRANTED INCLUDING WITHOUT LIMITATION, IMPLIED WARRANTIES OF MERCHANTABILITY, FITNESS FOR ANY PARTICULAR PURPOSE, OR NON INFRINGEMENT. BUYER'S EXCLUSIVE REMEDY FOR NON-CONFORMING PRODUCTS DURING THE WARRANTY PERIOD IS LIMITED TO REPAIR, REPLACEMENT OF OR REFUND FOR THE NON-CONFORMING PRODUCT(S) AT SELLER'S SOLE OPTION. THERE IS NO OBLIGATION TO REPAIR, REPLACE OR REFUND FOR PRODUCTS AS THE RESULT OF (I) ACCIDENT, DISASTER OR EVENT OF FORCE MAJEURE, (II) MISUSE, FAULT OR NEGLIGENCE OF OR BY BUYER, (III) USE OF THE PRODUCTS IN A MANNER FOR WHICH THEY WERE NOT DESIGNED, OR (IV) IMPROPER STORAGE AND HANDLING OF THE PRODUCTS. Unless otherwise expressly stated on the Product or in the documentation accompanying the Product, the Product is intended for research only and is not to be used for any other purpose, including without limitation, unauthorized commercial uses, in vitro diagnostic uses, ex vivo or in vivo therapeutic uses, or any type of consumption by or application to human or animals.