

E-selectin Monoclonal Antibody (1.2B6)

Product Details

Size	100 µg
Species Reactivity	Human, Pig
Published Species	Human
Host/Isotype	Mouse / IgG1
Class	Monoclonal
Type	Antibody
Clone	1.2B6
Conjugate	Unconjugated
Immunogen	Human E-Selectin (ELAM-1)
Form	Liquid
Concentration	1 mg/mL
Purification	Protein A
Storage buffer	PBS
Contains	0.09% sodium azide
Storage conditions	Store at 4°C short term. For long term storage, store at -20°C, avoiding freeze/thaw cycles.
RRID	AB_558251

Applications	Tested Dilution	Publications
Western Blot (WB)	Assay-dependent	-
Immunohistochemistry (Frozen) (IHC (F))	1-10 µg/mL	-
Immunocytochemistry (ICC/IF)	1:100	1 Publication
Flow Cytometry (Flow)	10 µg/mL	-
ELISA (ELISA)	10 µg/mL	1 Publication
Immunoprecipitation (IP)	Assay-dependent	-
Peptide array (Array)	-	1 Publication
Miscellaneous PubMed (Misc)	-	1 Publication

Product Specific Information

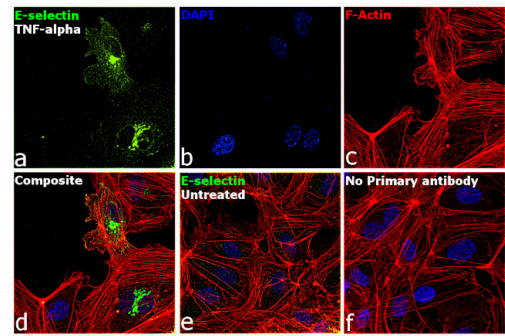
Not suitable for immunohistochemistry (paraffin).

Store product as a concentrated solution. Centrifuge briefly prior to opening the vial.

Product Images For E-selectin Monoclonal Antibody (1.2B6)

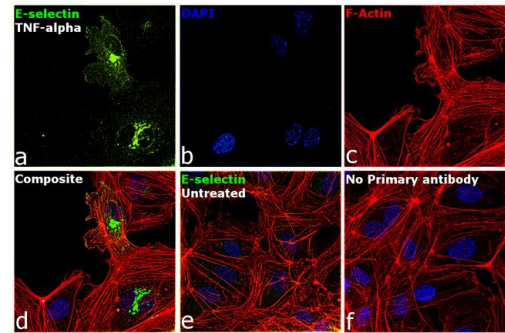
E-selectin Antibody (MA1-22165) in ICC/IF

Immunofluorescence analysis of E-selectin was performed using 70% confluent log phase HUVEC cells treated with 100 U/mL TNF-alpha for 3 Hrs. The cells were fixed with 4% Paraformaldehyde for 10 minutes, permeabilized with 0.1% Triton™ X-100 for 10 minutes, and blocked with 2% BSA for 10 minutes at room temperature. The cells were labeled with E-selectin Monoclonal Antibody (1.2B6) (Product # MA1-22165) at 1:100 dilution in 0.1% BSA, incubated at 4 degree celsius overnight and then labeled with Donkey anti-Mouse IgG (H+L) Highly Cross-Adsorbed Secondary Antibody, Alexa Fluor Plus 488 (Product # A32766, 1:2000 dilution) for 45 minutes at room temperature (Panel a: Green). Nuclei (Panel b: Blue) were stained with SlowFade® Gold Antifade Mountant with DAPI (Product # S36938). F-actin (Panel c: Red) was stained with Rhodamine Phalloidin (Product # R415, 1:300). Panel d represents the merged image showing cytoplasmic and membrane localization. Panel e represents untreated cells with reduced signal. Panel f represents control cells with no primary antibody to assess background. The images were captured at 60X magnification.



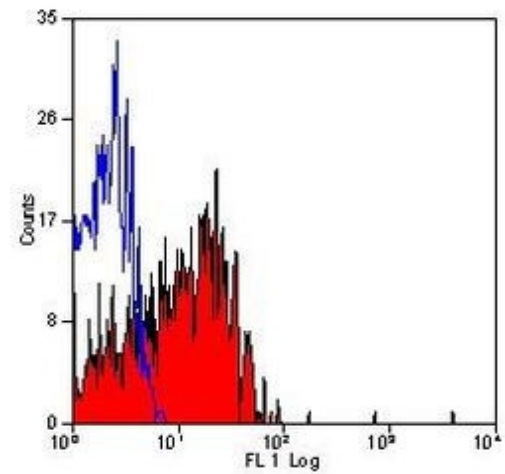
E-selectin Antibody (MA1-22165)

Altered expression of proteins upon cell treatment demonstrates antibody specificity. Immunofluorescence using E-selectin Monoclonal Antibody (1.2B6) (Product # MA1-22165), shows increased expression of proteins in HUVEC upon TNF-alpha treatment. {TM}



E-selectin Antibody (MA1-22165) in Flow

Flow Cytometry analysis of Collagen I was performed in thrombin activated human peripheral blood platelets using Collagen I Polyclonal Antibody, Biotin (Product # PA1-28530).



View more figures on thermofisher.com

Immunocytochemistry (1)

The Journal of investigative dermatology

Novel anti-inflammatory properties of the angiogenesis inhibitor vasostatin.

"MA1-22165 was used in immunocytochemistry to investigate the anti-inflammatory effect of angiogenesis inhibitor vasostatin"

Authors: Huegel R,Velasco P,De la Luz Sierra M,Christophers E,Schröder JM,Schwarz T,Tosato G,Lange-Asschenfeldt B

Year
2007

Species
Human

ELISA (1)

Journal of extracellular vesicles

Potentials and capabilities of the Extracellular Vesicle (EV) Array.

"MA1-22165 was used in ELISA to characterize capabilities and potentials of extracellular vesicle (EV) array"

Authors: Jørgensen MM,Bæk R,Varming K

Year
2015

Peptide array (1)

Journal of extracellular vesicles

Potentials and capabilities of the Extracellular Vesicle (EV) Array.

"MA1-22165 was used in ELISA to characterize capabilities and potentials of extracellular vesicle (EV) array"

Authors: Jørgensen MM,Bæk R,Varming K

Year
2015

Miscellaneous PubMed (1)

Journal of immunological methods

The impact of various preanalytical treatments on the phenotype of small extracellular vesicles in blood analyzed by protein microarray.

"MA122165 was used to optimize the collection and analysis of extracellular vesicles"

Authors: Bæk R,Søndergaard EK,Varming K,Jørgensen MM

Year
2016

Species
Human

For Research Use Only. Not for use in diagnostic procedures. Not for resale without express authorization. Products are warranted to operate or perform substantially in conformance with published Product specifications in effect at the time of sale, as set forth in the Production documentation, specifications and/or accompanying package inserts ("Documentation"). No claim of suitability for use in applications regulated by FDA is made. The warranty provided herein is valid only when used by properly trained individuals. Unless otherwise stated in the Documentation, this warranty is limited to one year from date of shipment when the Product is subjected to normal, proper and intended usage. This warranty does not extend to anyone other than the Buyer. Any model or sample furnished to Buyer is merely illustrative of the general type and quality of goods and does not represent that any Product will conform to such model or sample. NO OTHER WARRANTIES, EXPRESS OR IMPLIED, ARE GRANTED INCLUDING WITHOUT LIMITATION, IMPLIED WARRANTIES OF MERCHANTABILITY, FITNESS FOR ANY PARTICULAR PURPOSE, OR NON-INFRINGEMENT. BUYER'S EXCLUSIVE REMEDY FOR NON-CONFORMING PRODUCTS DURING THE WARRANTY PERIOD IS LIMITED TO REPAIR, REPLACEMENT OF OR REFUND FOR THE NON-CONFORMING PRODUCT(S) AT SELLER'S SOLE OPTION. THERE IS NO OBLIGATION TO REPAIR, REPLACE OR REFUND FOR PRODUCTS AS THE RESULT OF (I) ACCIDENT, DISASTER OR EVENT OF FORCE MAJEURE, (II) MISUSE, FAULT OR NEGLIGENCE OF OR BY BUYER, (III) USE OF THE PRODUCTS IN A MANNER FOR WHICH THEY WERE NOT DESIGNED, OR (IV) IMPROPER STORAGE AND HANDLING OF THE PRODUCTS. Unless otherwise expressly stated on the Product or in the documentation accompanying the Product, the Product is intended for research only and is not to be used for any other purpose, including without limitation, unauthorized commercial uses, in vitro diagnostic uses, ex vivo or in vivo therapeutic uses, or any type of consumption by or application to human or animals.